

Complement C6 Polyclonal antibody

Catalog Number: 17239-1-AP

7 Publications

Basic Information

Catalog Number:

17239-1-AP

Size:

150ul, Concentration: 500 ug/ml by Nanodrop;

Source:

Rabbit

Isotype:

IgG

Immunogen Catalog Number:

AG11083

GenBank Accession Number:

BC035723

GeneID (NCBI):

729

UNIPROT ID:

P13671

Full Name:

complement component 6

Calculated MW:

934 aa, 105 kDa

Observed MW:

105 kDa

Purification Method:

Antigen affinity purification

Recommended Dilutions:

WB 1:500-1:2000

IP 0.5-4.0 ug for 1.0-3.0 mg of total protein lysate

IHC 1:50-1:500

Applications

Tested Applications:

WB, IHC, IP, ELISA

Cited Applications:

WB, IHC, IF

Species Specificity:

human, mouse

Cited Species:

human, rat

Note-IHC: suggested antigen retrieval with TE buffer pH 9.0; (*) Alternatively, antigen retrieval may be performed with citrate buffer pH 6.0

Positive Controls:

WB : human blood,

IP : human plasma tissue,

IHC : mouse liver tissue, human liver cancer tissue

Background Information

The final consequence of complement activation is formation of the membrane attack complex (MAC), a multiprotein assembly that perforates cell membranes, forming transmembrane channels. C6 is 1 of 5 late-acting proteins of complement that participate in assembly and function of the MAC. The deduced C6 protein contains 934 amino acids, including a 21-amino acid N-terminal signal sequence and 2 N-glycosylation sites. Mutations in the C6 gene are associated with complement component-6 deficiency.

Notable Publications

Author	Pubmed ID	Journal	Application
Shani Zilberman-Itskovich	31513644	PLoS One	IF
Gerard J. Nuovo	36334414	Ann Diagn Pathol	IHC
Xiaoyi Huang	31630466	Oral Dis	WB

Storage

Storage:

Store at -20°C. Stable for one year after shipment.

Storage Buffer:

PBS with 0.02% sodium azide and 50% glycerol pH 7.3.

Aliquoting is unnecessary for -20°C storage

*** 20ul sizes contain 0.1% BSA

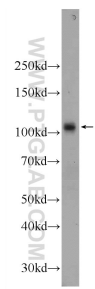
For technical support and original validation data for this product please contact:

T: 1 (888) 4PTGLAB (1-888-478-4522) (toll free in USA), or 1(312) 455-8498 (outside USA)

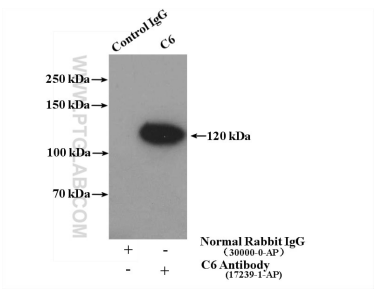
E: proteintech@ptglab.com
W: ptglab.com

This product is exclusively available under Proteintech Group brand and is not available to purchase from any other manufacturer.

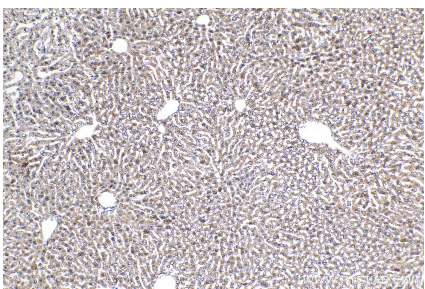
Selected Validation Data



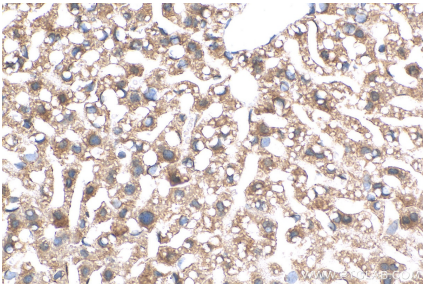
human blood were subjected to SDS PAGE followed by western blot with 17239-1-AP (C6 antibody) at dilution of 1:1000 incubated at room temperature for 1.5 hours.



IP result of anti-C6 (IP:17239-1-AP, 4ug; Detection:17239-1-AP 1:800) with human plasma lysate 4000ug.



Immunohistochemical analysis of paraffin-embedded mouse liver tissue slide using 17239-1-AP (C6 antibody) at dilution of 1:200 (under 10x lens). Heat mediated antigen retrieval with Tris-EDTA buffer (pH 9.0).



Immunohistochemical analysis of paraffin-embedded mouse liver tissue slide using 17239-1-AP (C6 antibody) at dilution of 1:200 (under 40x lens). Heat mediated antigen retrieval with Tris-EDTA buffer (pH 9.0).