

For Research Use Only

SQRDL Polyclonal antibody

Catalog Number: 17256-1-AP

Featured Product

28 Publications



Basic Information

Catalog Number:

17256-1-AP

Size:

150ul, Concentration: 550 ug/ml by Nanodrop;

Source:

Rabbit

Isotype:

IgG

Immunogen Catalog Number:

AG10762

GenBank Accession Number:

BC016836

GeneID (NCBI):

58472

UNIPROT ID:

Q9Y6N5

Full Name:

sulfide quinone reductase-like (yeast)

Calculated MW:

450 aa, 50 kDa

Observed MW:

50 kDa

Purification Method:

Antigen affinity purification

Recommended Dilutions:

WB 1:1000-1:4000

IP 0.5-4.0 ug for 1.0-3.0 mg of total protein lysate

IHC 1:20-1:200

Applications

Tested Applications:

WB, IP, IHC, ELISA

Cited Applications:

WB, IHC

Species Specificity:

human, mouse, rat

Cited Species:

human, mouse, rat, pig, chicken

Positive Controls:

WB : HeLa cells, HT-29 cells, HepG2 cells, THP-1 cells, HepG cells

IP : HeLa cells,

IHC : human brain tissue, human testis tissue, human colon cancer tissue, human liver cancer tissue, mouse liver tissue, rat liver tissue, human spleen tissue, human lung tissue

Note-IHC: suggested antigen retrieval with TE buffer pH 9.0; (*) Alternatively, antigen retrieval may be performed with citrate buffer pH 6.0

Background Information

SQRDL(Sulfide:quinone oxidoreductase, mitochondrial) catalyzes the oxidation of hydrogen sulfide, with the help of a quinone. Although the SQRDL precursor protein displays a molecular weight of 50 kDa, a prominent band at about 46 kDa is detected by western blot. This discrepancy reflects the cleavage of an N-terminal targeting sequence of 4 kDa during the import of the protein into the mitochondria(PMID:22067608). SQRDL is one of the enzymes involved in H₂S signaling in a discrete population of neurons, oligodendrocytes, and endothelial cells.

Notable Publications

Author	Pubmed ID	Journal	Application
Pilar González-García	32975579	Hum Mol Genet	WB
Giulio Kleiner	30251690	Biochim Biophys Acta Mol Basis Dis	WB
Agustín Hidalgo-Gutiérrez	30482867	EMBO Mol Med	WB

Storage

Storage:

Store at -20°C. Stable for one year after shipment.

Storage Buffer:

PBS with 0.02% sodium azide and 50% glycerol, pH7.3

Aliquoting is unnecessary for -20°C storage

*** 20ul sizes contain 0.1% BSA

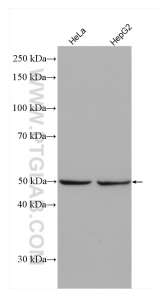
For technical support and original validation data for this product please contact:

T: 1 (888) 4PTGLAB (1-888-478-4522) (toll free in USA), or 1(312) 455-8498 (outside USA)

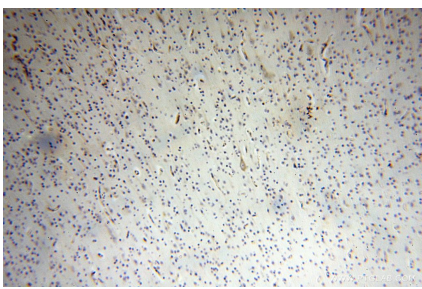
E: proteintech@ptglab.com
W: ptglab.com

This product is exclusively available under Proteintech Group brand and is not available to purchase from any other manufacturer.

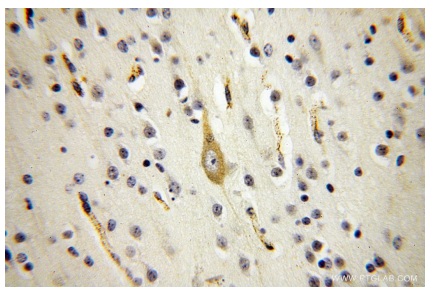
Selected Validation Data



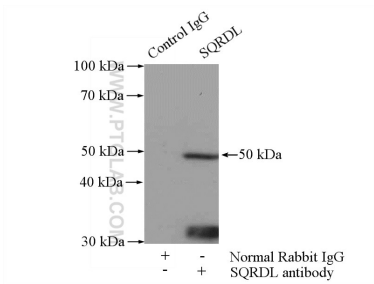
Various lysates were subjected to SDS PAGE followed by western blot with 17256-1-AP (SQRDL antibody) at dilution of 1:2000 incubated at room temperature for 1.5 hours.



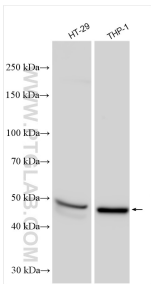
Immunohistochemical analysis of paraffin-embedded human brain using 17256-1-AP (SQRDL antibody) at dilution of 1:100 (under 10x lens).



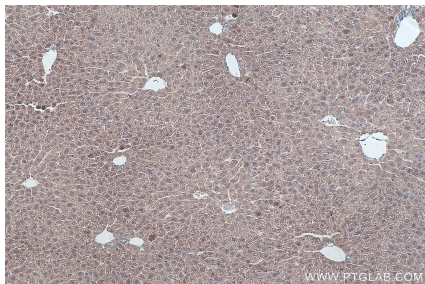
Immunohistochemical analysis of paraffin-embedded human brain using 17256-1-AP (SQRDL antibody) at dilution of 1:100 (under 40x lens).



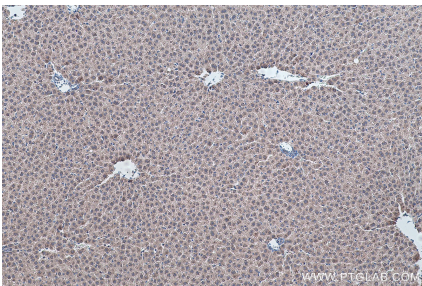
IP result of anti-SQRDL (IP:17256-1-AP, 4ug; Detection:17256-1-AP 1:500) with HeLa cells lysate 2000ug.



Various lysates were subjected to SDS PAGE followed by western blot with 17256-1-AP (SQRDL antibody) at dilution of 1:4000 incubated at room temperature for 1.5 hours.



Immunohistochemical analysis of paraffin-embedded mouse liver tissue slide using 17256-1-AP (SQRDL antibody) at dilution of 1:2000 (under 10x lens). Heat mediated antigen retrieval with Tris-EDTA buffer (pH 9.0).



Immunohistochemical analysis of paraffin-embedded rat liver tissue slide using 17256-1-AP (SQRDL antibody) at dilution of 1:2000 (under 10x lens). Heat mediated antigen retrieval with Tris-EDTA buffer (pH 9.0).