

For Research Use Only

# HLA class I (HLA-B) Polyclonal antibody

Catalog Number: 17260-1-AP

7 Publications



## Basic Information

### Catalog Number:

17260-1-AP

### Size:

150ul, Concentration: 450 ug/ml by Nanodrop and 293 ug/ml by Bradford method using BSA as the standard;

### Source:

Rabbit

### Isotype:

IgG

### Immunogen Catalog Number:

AG10947

### GenBank Accession Number:

BC013187

### GeneID (NCBI):

3106

### UNIPROT ID:

P01889

### Full Name:

major histocompatibility complex, class I, B

### Calculated MW:

362 aa, 40 kDa

### Observed MW:

40-45 kDa

### Purification Method:

Antigen affinity purification

### Recommended Dilutions:

WB 1:1000-1:4000

IP 0.5-4.0 ug for 1.0-3.0 mg of total protein lysate

IHC 1:50-1:500

IF/ICC 1:50-1:500

## Applications

### Tested Applications:

WB, IHC, IF/ICC, IP, ELISA

### Cited Applications:

WB, IHC, IF

### Species Specificity:

human

### Cited Species:

human

**Note-IHC: suggested antigen retrieval with TE buffer pH 9.0; (\*) Alternatively, antigen retrieval may be performed with citrate buffer pH 6.0**

### Positive Controls:

**WB**: A549 cells, HepG2 cells, Jurkat cells, MCF-7 cells, HeLa cells

**IP**: HepG2 cells,

**IHC**: human stomach cancer tissue, human heart tissue, human kidney tissue, human lung tissue, human ovary tissue, human spleen tissue, human tonsillitis tissue

**IF/ICC**: HepG2 cells,

## Background Information

Human major histocompatibility complex (MHC) antigens, also referred to as human leukocyte antigens (HLA), are encoded by genes located on the short arm of chromosome 6 (6p21.3). There are two classes of HLA antigens: class I (HLA-A, B and C) and class II (HLA-D). This class I molecules are polymorphic membrane glycoproteins composed of a heavy (alpha) chain (44 kDa) which is encoded by a HLA class I gene (HLA-A, B or C), and  $\beta$ 2-microglobulin light (beta) chain (12 kDa). They are involved in the presentation of foreign antigens to the immune system. This polyclonal antibody raised against human HLA-B can also react with HLA-A and HLA-C. (PMID: 667938; 3375250)

## Notable Publications

Author	Pubmed ID	Journal	Application
Chao Zhang	35361683	Gut	IHC
Lisa L Kirkemo	35257663	Elife	IF
Ting Li	34238922	Cell Death Dis	WB

## Storage

### Storage:

Store at -20°C. Stable for one year after shipment.

### Storage Buffer:

PBS with 0.02% sodium azide and 50% glycerol pH 7.3.

Aliquoting is unnecessary for -20°C storage

\*\*\* 20ul sizes contain 0.1% BSA

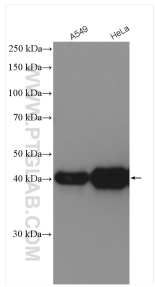
For technical support and original validation data for this product please contact:

T: 1 (888) 4PTGLAB (1-888-478-4522) (toll free in USA), or 1(312) 455-8498 (outside USA)

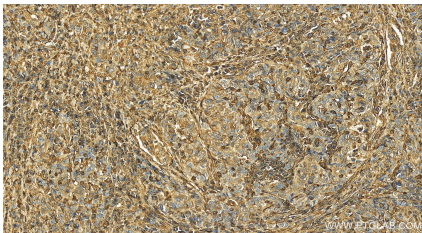
E: [proteintech@ptglab.com](mailto:proteintech@ptglab.com)  
W: [ptglab.com](http://ptglab.com)

This product is exclusively available under Proteintech Group brand and is not available to purchase from any other manufacturer.

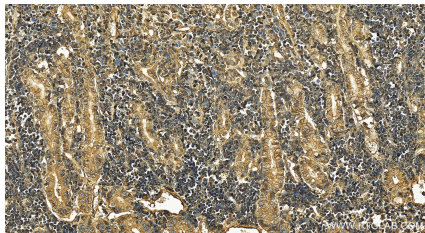
Selected Validation Data



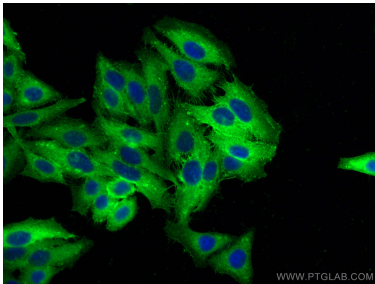
Various lysates were subjected to SDS PAGE followed by western blot with 17260-1-AP (HLA class I (HLA-B) antibody) at dilution of 1:2000 incubated at room temperature for 1.5 hours.



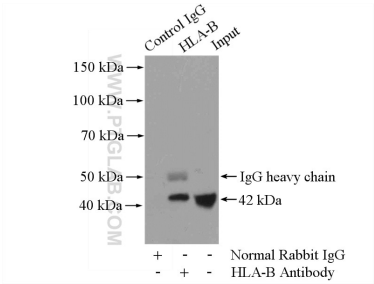
Immunohistochemical analysis of paraffin-embedded human stomach cancer tissue slide using 17260-1-AP (HLA class I (HLA-B) antibody) at dilution of 1:200 (under 20x lens). Heat mediated antigen retrieval with Tris-EDTA buffer (pH 9.0).



Immunohistochemical analysis of paraffin-embedded human stomach cancer tissue slide using 17260-1-AP (HLA class I (HLA-B) antibody) at dilution of 1:200 (under 20x lens). Heat mediated antigen retrieval with Tris-EDTA buffer (pH 9.0).



Immunofluorescent analysis of (-20°C Ethanol) fixed HepG2 cells using HLA class I (HLA-B) antibody (17260-1-AP) at dilution of 1:200 and CoraLite®488-Conjugated AffiniPure Goat Anti-Rabbit IgG(H+L).



IP result of anti-HLA class I (HLA-B) (IP:17260-1-AP, 4ug; Detection:17260-1-AP 1:2000) with HepG2 cells lysate 4000ug.