

For Research Use Only

NDEL1 Polyclonal antibody

Catalog Number: 17262-1-AP

5 Publications



Basic Information

Catalog Number:

17262-1-AP

Size:

150ul, Concentration: 900 ug/ml by Nanodrop and 433 ug/ml by Bradford method using BSA as the standard;

Source:

Rabbit

Isotype:

IgG

Immunogen Catalog Number:

AG10975

GenBank Accession Number:

BC026101

GeneID (NCBI):

81565

UNIPROT ID:

Q9GZM8

Full Name:

nudE nuclear distribution gene E homolog (A. nidulans)-like 1

Calculated MW:

345 aa, 38 kDa, 41 kDa

Observed MW:

38-42 kDa

Purification Method:

Antigen affinity purification

Recommended Dilutions:

WB 1:500-1:2000

IP 0.5-4.0 ug for 1.0-3.0 mg of total protein lysate

Applications

Tested Applications:

WB, IP, ELISA

Cited Applications:

WB, IP, IF

Species Specificity:

human, mouse, rat

Cited Species:

human, mouse

Positive Controls:

WB : human brain tissue, HepG2 cells

IP : HepG2 cells,

Background Information

Nuclear distribution factor E-homolog 1 (NDE1), NDE-like 1 (NDEL1), and Lissencephaly 1 (LIS1) together involve in essential neurodevelopmental processes, including neuronal precursor proliferation and differentiation, neurite outgrowth, and neuronal migration. All three bind directly to Disrupted in Schizophrenia 1 (DISC1), a scaffold protein critical to neuronal proliferation, integration, migration, and synaptic function within the developing and adult brain.[PMID: 18469341] Nuclear distribution element-like 1 (NDEL1) was firstly identified as a regulator of the cytoskeleton in microtubule and intermediate filament dynamics and microtubule-based transport [PMID:21948775]. It is required for organization of the cellular microtubule array and microtubule anchoring at the centrosome, which is in part by targeting the microtubule severing protein KATNA1 to the centrosome[PMID:15728732].

Notable Publications

Author	Pubmed ID	Journal	Application
Youngsik Woo	31815665	Elife	IP, WB
Ji-Ho Hong	27546710	Sci Rep	WB, IF
Hyowon Hong	31004438	Ann Neurol	WB

Storage

Storage:

Store at -20°C. Stable for one year after shipment.

Storage Buffer:

PBS with 0.02% sodium azide and 50% glycerol pH 7.3.

Aliquoting is unnecessary for -20°C storage

*** 20ul sizes contain 0.1% BSA

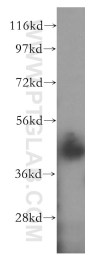
For technical support and original validation data for this product please contact:

T: 1 (888) 4PTGLAB (1-888-478-4522) (toll free in USA), or 1(312) 455-8498 (outside USA)

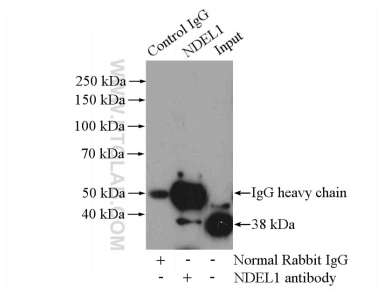
E: proteintech@ptglab.com
W: ptglab.com

This product is exclusively available under Proteintech Group brand and is not available to purchase from any other manufacturer.

Selected Validation Data



human brain tissue were subjected to SDS PAGE followed by western blot with 17262-1-AP (NDEL1 antibody) at dilution of 1:500 incubated at room temperature for 1.5 hours.



IP result of anti-NDEL1 (IP:17262-1-AP, 4ug; Detection:17262-1-AP 1:300) with HepG2 cells lysate 2400ug.