

For Research Use Only

# KIF6 Polyclonal antibody

Catalog Number: 17290-1-AP

2 Publications



## Basic Information

### Catalog Number:

17290-1-AP

### Size:

150ul, Concentration: 300 ug/ml by Nanodrop and 267 ug/ml by Bradford method using BSA as the standard;

### Source:

Rabbit

### Isotype:

IgG

### Immunogen Catalog Number:

AG11164

### GenBank Accession Number:

BC022074

### GeneID (NCBI):

221458

### UNIPROT ID:

Q6ZMV9

### Full Name:

kinesin family member 6

### Calculated MW:

265aa, 30 kDa; 814aa, 93 kDa

### Observed MW:

93 kDa

### Purification Method:

Antigen affinity purification

### Recommended Dilutions:

WB 1:500-1:2000

IP 0.5-4.0 ug for 1.0-3.0 mg of total protein lysate

IHC 1:20-1:200

## Applications

### Tested Applications:

WB, IP, IHC, ELISA

### Cited Applications:

WB, IF

### Species Specificity:

human, mouse, rat

### Cited Species:

mouse, monkey

**Note-IHC: suggested antigen retrieval with TE buffer pH 9.0; (\*) Alternatively, antigen retrieval may be performed with citrate buffer pH 6.0**

### Positive Controls:

WB : mouse testis tissue, rat testis tissue

IP : mouse testis tissue,

IHC : human liver tissue,

## Notable Publications

| Author         | Pubmed ID | Journal        | Application |
|----------------|-----------|----------------|-------------|
| Maki Takagishi | 38235522  | Dis Model Mech | IF, WB      |
| Maki Takagishi | 36824804  | bioRxiv        | WB, IF      |

## Storage

### Storage:

Store at -20°C. Stable for one year after shipment.

### Storage Buffer:

PBS with 0.02% sodium azide and 50% glycerol pH 7.3.

Aliquoting is unnecessary for -20°C storage

\*\*\* 20ul sizes contain 0.1% BSA

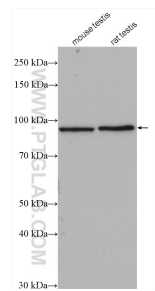
For technical support and original validation data for this product please contact:

T: 1 (888) 4PTGLAB (1-888-478-4522) (toll free in USA), or 1(312) 455-8498 (outside USA)

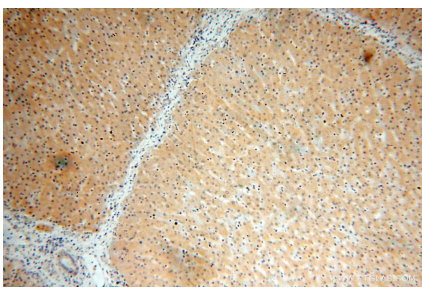
E: [proteintech@ptglab.com](mailto:proteintech@ptglab.com)  
W: [ptglab.com](http://ptglab.com)

This product is exclusively available under Proteintech Group brand and is not available to purchase from any other manufacturer.

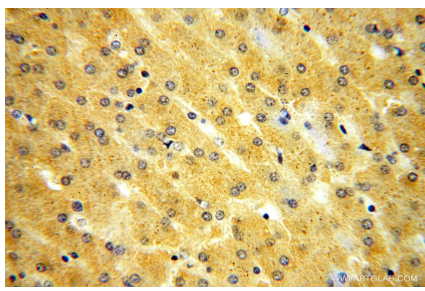
Selected Validation Data



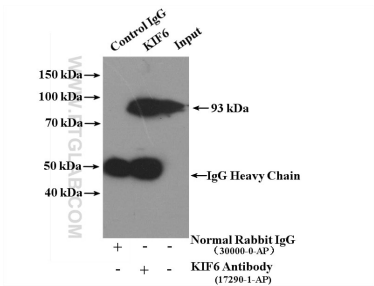
Various lysates were subjected to SDS PAGE followed by western blot with 17290-1-AP (KIF6 antibody) at dilution of 1:1000 incubated at room temperature for 1.5 hours.



Immunohistochemical analysis of paraffin-embedded human liver using 17290-1-AP (KIF6 antibody) at dilution of 1:50 (under 10x lens).



Immunohistochemical analysis of paraffin-embedded human liver using 17290-1-AP (KIF6 antibody) at dilution of 1:50 (under 40x lens).



IP result of anti-KIF6 (IP:17290-1-AP, 4ug; Detection:17290-1-AP 1:500) with mouse testis tissue lysate 4000ug.