

For Research Use Only

ERLIN1 Polyclonal antibody

Catalog Number: 17311-1-AP

6 Publications



Basic Information

Catalog Number:

17311-1-AP

Size:

150ul, Concentration: 550 ug/ml by Nanodrop;

Source:

Rabbit

Isotype:

IgG

Immunogen Catalog Number:

AG11279

GenBank Accession Number:

BC031791

GeneID (NCBI):

10613

UNIPROT ID:

O75477

Full Name:

ER lipid raft associated 1

Calculated MW:

346 aa, 39 kDa

Observed MW:

39 kDa

Purification Method:

Antigen affinity purification

Recommended Dilutions:

WB 1:1000-1:6000

IP 0.5-4.0 ug for 1.0-3.0 mg of total protein lysate

IHC 1:50-1:500

IF/ICC 1:20-1:200

Applications

Tested Applications:

WB, IHC, IF/ICC, IP, ELISA

Cited Applications:

WB, IHC

Species Specificity:

human, mouse, rat

Cited Species:

human, mouse

Note-IHC: suggested antigen retrieval with TE buffer pH 9.0; (*) Alternatively, antigen retrieval may be performed with citrate buffer pH 6.0

Positive Controls:

WB: HL-60 cells, COLO 320 cells, human kidney tissue, human ovary cancer cells, rat pancreas tissue, human brain tissue, mouse liver tissue, U-251 cells, U-397 cells

IP: mouse heart tissue,

IHC: mouse liver tissue, human placenta tissue

IF/ICC: HeLa cells,

Notable Publications

Author	Pubmed ID	Journal	Application
Michael L van de Weijer	33065021	Mol Cell	WB
Michael L van de Weijer	32738194	Mol Cell	WB
Kirsteen M Tullett	33264090	Elife	WB

Storage

Storage:

Store at -20°C. Stable for one year after shipment.

Storage Buffer:

PBS with 0.02% sodium azide and 50% glycerol pH 7.3.

Aliquoting is unnecessary for -20°C storage

*** 20ul sizes contain 0.1% BSA

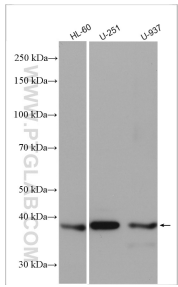
For technical support and original validation data for this product please contact:

T: 1 (888) 4PTGLAB (1-888-478-4522) (toll free in USA), or 1(312) 455-8498 (outside USA)

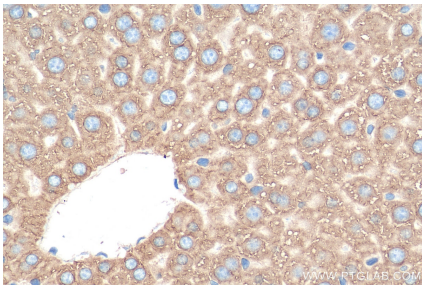
E: proteintech@ptglab.com
W: ptglab.com

This product is exclusively available under Proteintech Group brand and is not available to purchase from any other manufacturer.

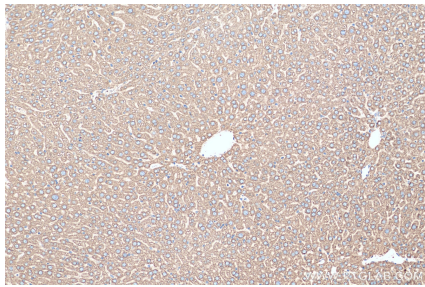
Selected Validation Data



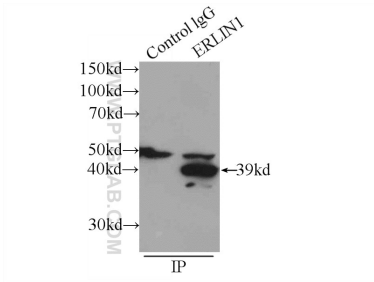
Various lysates were subjected to SDS PAGE followed by western blot with 17311-1-AP (ERLIN1 antibody) at dilution of 1:3000 incubated at room temperature for 1.5 hours.



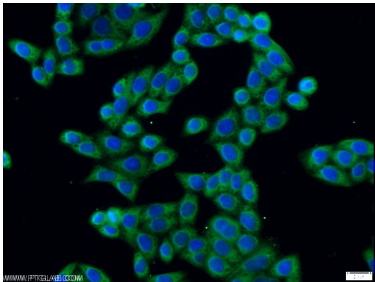
Immunohistochemical analysis of paraffin-embedded mouse liver tissue slide using 17311-1-AP (ERLIN1 antibody) at dilution of 1:200 (under 40x lens). Heat mediated antigen retrieval with Tris-EDTA buffer (pH 9.0).



Immunohistochemical analysis of paraffin-embedded mouse liver tissue slide using 17311-1-AP (ERLIN1 antibody) at dilution of 1:200 (under 10x lens). Heat mediated antigen retrieval with Tris-EDTA buffer (pH 9.0).



IP result of anti-ERLIN1 (IP:17311-1-AP, 3ug; Detection:17311-1-AP 1:1000) with mouse heart tissue lysate 4000ug.



Immunofluorescent analysis of HeLa cells using 17311-1-AP (ERLIN1 antibody) at dilution of 1:50 and Alexa Fluor 488-conjugated Goat Anti-Rabbit IgG(H+L).