

Cytokeratin 20 Polyclonal antibody

Catalog Number: 17329-1-AP

16 Publications

Basic Information

Catalog Number:

17329-1-AP

Size:

150ul, Concentration: 750 ug/ml by Nanodrop;

Source:

Rabbit

Isotype:

IgG

Immunogen Catalog Number:

AG11308

GenBank Accession Number:

BC031559

GeneID (NCBI):

54474

UNIPROT ID:

P35900

Full Name:

keratin 20

Calculated MW:

424 aa, 48 kDa

Observed MW:

46 kDa

Purification Method:

Antigen affinity purification

Recommended Dilutions:

WB: 1:2000-1:16000

IHC: 1:1000-1:4000

IF-P: 1:500-1:2000

IF/ICC: 1:200-1:800

FC (Intra): 0.20 ug per 10⁶ cells in a 100 µl suspension

Applications

Tested Applications:

WB, IHC, IF/ICC, IF-P, FC (Intra), ELISA

Cited Applications:

WB, IHC, IF

Species Specificity:

human, mouse, rat, rabbit

Cited Species:

human, mouse

Note-IHC: suggested antigen retrieval with TE buffer pH 9.0; (*) Alternatively, antigen retrieval may be performed with citrate buffer pH 6.0

Positive Controls:

WB: COLO 320 cells, HeLa cells, HT-29 cells

IHC: human colon tissue, human appendicitis tissue, human colon cancer tissue, human stomach cancer tissue, human urothelial carcinoma tissue

IF-P: Rabbit colon tissue,

IF/ICC: Caco-2 cells, HeLa cells

FC (Intra): HT-29 cells,

Background Information

Keratins are a large family of proteins that form the intermediate filament cytoskeleton of epithelial cells, which are classified into two major sequence types. Type I keratins are a group of acidic intermediate filament proteins, including K9-K23, and the hair keratins Ha1-Ha8. Type II keratins are the basic or neutral counterparts to the acidic type I keratins, including K1-K8, and the hair keratins, Hb1-Hb6. Keratin 20 is a type I cytokeratin. It is a major cellular protein of mature enterocytes and goblet cells and is specifically found in the gastric and intestinal mucosa.

Notable Publications

| Author | Pubmed ID | Journal | Application |
|--------------|-----------|---------------|-------------|
| Pingping Zhu | 30224759 | Nat Cell Biol | WB |
| Ziyi Wang | 36387215 | Front Oncol | WB |
| Qi Cheng | 35561877 | Cancer Lett | IF |

Storage

Storage:

Store at -20°C. Stable for one year after shipment.

Storage Buffer:

PBS with 0.02% sodium azide and 50% glycerol, pH7.3

Aliquoting is unnecessary for -20°C storage

*** 20ul sizes contain 0.1% BSA

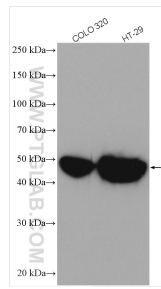
For technical support and original validation data for this product please contact:

T: 1 (888) 4PTGLAB (1-888-478-4522) (toll free in USA), or 1(312) 455-8498 (outside USA)

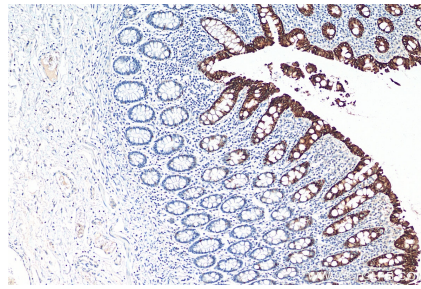
E: proteintech@ptglab.com
 W: ptglab.com

This product is exclusively available under Proteintech Group brand and is not available to purchase from any other manufacturer.

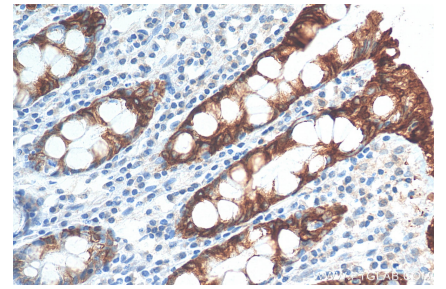
Selected Validation Data



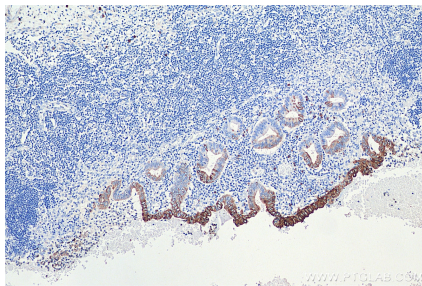
Various lysates were subjected to SDS PAGE followed by western blot with 17329-1-AP (Cytokeratin 20 antibody) at dilution of 1:8000 incubated at room temperature for 1.5 hours.



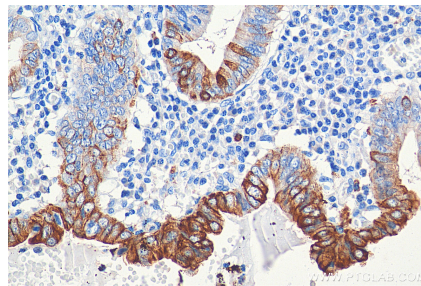
Immunohistochemical analysis of paraffin-embedded human colon tissue slide using 17329-1-AP (Cytokeratin 20 antibody) at dilution of 1:2000 (under 10x lens). Heat mediated antigen retrieval with Tris-EDTA buffer (pH 9.0).



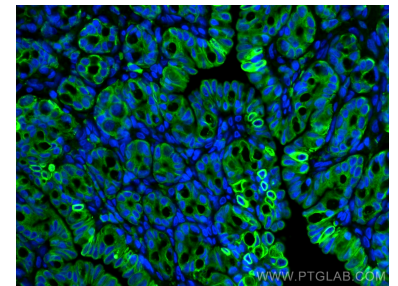
Immunohistochemical analysis of paraffin-embedded human colon tissue slide using 17329-1-AP (Cytokeratin 20 antibody) at dilution of 1:2000 (under 40x lens). Heat mediated antigen retrieval with Tris-EDTA buffer (pH 9.0).



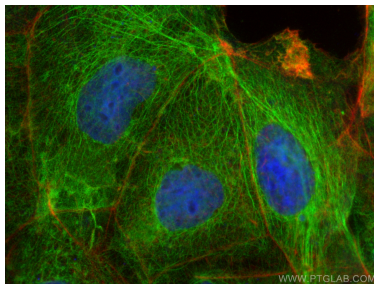
Immunohistochemical analysis of paraffin-embedded human appendicitis tissue slide using 17329-1-AP (Cytokeratin 20 antibody) at dilution of 1:5000 (under 10x lens). Heat mediated antigen retrieval with Tris-EDTA buffer (pH 9.0).



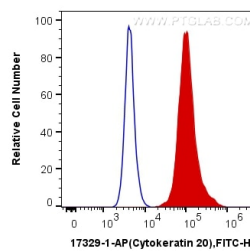
Immunohistochemical analysis of paraffin-embedded human appendicitis tissue slide using 17329-1-AP (Cytokeratin 20 antibody) at dilution of 1:5000 (under 40x lens). Heat mediated antigen retrieval with Tris-EDTA buffer (pH 9.0).



Immunofluorescent analysis of (4% PFA) fixed Rabbit colon tissue using Cytokeratin 20 antibody (17329-1-AP) at dilution of 1:1000 and CoraLite®488-Conjugated AffiniPure Goat Anti-Rabbit IgG(H+L).



Immunofluorescent analysis of (-20°C Ethanol) fixed Caco-2 cells using Cytokeratin 20 antibody (17329-1-AP) at dilution of 1:400 and CoraLite®488-Conjugated AffiniPure Goat Anti-Rabbit IgG(H+L) (SA00013-2), CL594-Phalloidin (red).



1X10⁶ HT-29 cells were intracellularly stained with 0.2 ug Anti-Human Cytokeratin 20 (17329-1-AP) and CoraLite®488-Conjugated AffiniPure Goat Anti-Rabbit IgG(H+L) at dilution 1:1000 (red), or 0.2 ug Control Antibody. Cells were fixed with 4% PFA and permeabilized with Flow Cytometry Perm Buffer (PF00011-C).