

For Research Use Only

Pepsinogen I Polyclonal antibody

Catalog Number: 17330-1-AP

4 Publications



Basic Information

Catalog Number: 17330-1-AP	GenBank Accession Number: BC029055	Purification Method: Antigen affinity purification
Size: 150ul , Concentration: 500 µg/ml by Nanodrop and 300 µg/ml by Bradford method using BSA as the standard;	GeneID (NCBI): 5222	Recommended Dilutions: WB 1:500-1:2000 IHC 1:20-1:200
Source: Rabbit	Full Name: pepsinogen 5, group I (pepsinogen A)	
Isotype: IgG	Calculated MW: 388 aa, 42 kDa	
Immunogen Catalog Number: AG11309	Observed MW: 42 kDa	

Applications

Tested Applications: IHC, WB, ELISA	Positive Controls: WB : SGC-7901 cells, IHC : human stomach cancer tissue,
Cited Applications: IF, IHC, WB	
Species Specificity: human, mouse, rat	
Cited Species: human, mouse, rat	

Note-IHC: suggested antigen retrieval with TE buffer pH 9.0; (*) Alternatively, antigen retrieval may be performed with citrate buffer pH 6.0

Background Information

Pepsinogen I belongs to the peptidase A1 family. It shows particularly broad specificity and although bonds involving phenylalanine and leucine are preferred, many others are also cleaved to some extent. The gene encodes a 388 amino acid protein with a 15 amino acid signal peptide and 46 amino acid propeptide. This antibody can recognize PGA3(pepsinogen 3), PGA4(pepsinogen 4), PGA5(pepsinogen 5).

Notable Publications

Author	Pubmed ID	Journal	Application
Pål Vange	28902909	PLoS One	IF
Wen Shi	36057966	Dev Dyn	IHC
Yu Zhang	28300576	Hum Pathol	IHC

Storage

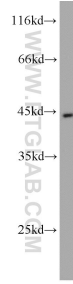
Storage:
Store at -20°C. Stable for one year after shipment.
Storage Buffer:
PBS with 0.02% sodium azide and 50% glycerol pH 7.3.
Aliquoting is unnecessary for -20°C storage

*** 20ul sizes contain 0.1% BSA

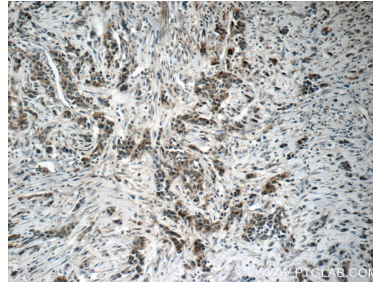
For technical support and original validation data for this product please contact:
T: 1 (888) 4PTGLAB (1-888-478-4522) (toll free in USA), or 1(312) 455-8498 (outside USA)
E: proteintech@ptglab.com
W: ptglab.com

This product is exclusively available under Proteintech Group brand and is not available to purchase from any other manufacturer.

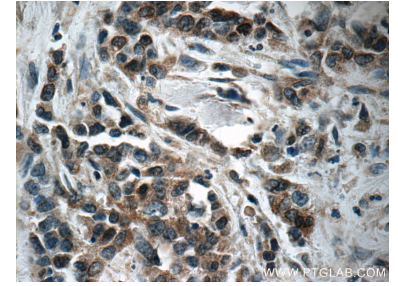
Selected Validation Data



SGC-7901 cells were subjected to SDS PAGE followed by western blot with 17330-1-AP (Pepsinogen I antibody) at dilution of 1:1000 incubated at room temperature for 1.5 hours.



Immunohistochemical analysis of paraffin-embedded human stomach cancer tissue slide using 17330-1-AP (Pepsinogen I antibody at dilution of 1:50 (under 10x lens).



Immunohistochemical analysis of paraffin-embedded human stomach cancer tissue slide using 17330-1-AP (Pepsinogen I antibody at dilution of 1:50 (under 40x lens).