

For Research Use Only

PLAC1L Polyclonal antibody

Catalog Number: 17343-1-AP

2 Publications



Basic Information

Catalog Number: 17343-1-AP	GenBank Accession Number: BC036256	Purification Method: Antigen affinity purification
Size: 150ul, Concentration: 500 µg/ml by Nanodrop and 280 µg/ml by Bradford method using BSA as the standard;	GeneID (NCBI): 219990	Recommended Dilutions: WB 1:200-1:1000 IHC 1:20-1:200
Source: Rabbit	Full Name: placenta-specific 1-like	
Isotype: IgG	Calculated MW: 158 aa, 18 kDa	
Immunogen Catalog Number: AG11384	Observed MW: 16 kDa	

Applications

Tested Applications: IHC, WB, ELISA	Positive Controls:
Cited Applications: IF, WB	WB: human placenta tissue,
Species Specificity: human	IHC: human ovary tissue, human placenta tissue
Cited Species: human, mouse	
Note-IHC: suggested antigen retrieval with TE buffer pH 9.0; (*) Alternatively, antigen retrieval may be performed with citrate buffer pH 6.0	

Background Information

PLAC1L, also named as TMEM122, is placenta specific protein. It is trophoblastic giant cells stain. The MW of PLAC1L is 16-18 kDa.

Notable Publications

Author	Pubmed ID	Journal	Application
Zhicheng Zheng	33975617	J Neuroinflammation	WB
Wenqi Hu	36042231	Nat Commun	IF

Storage

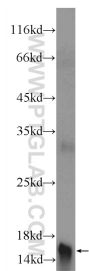
Storage:
Store at -20°C. Stable for one year after shipment.
Storage Buffer:
PBS with 0.02% sodium azide and 50% glycerol pH 7.3.
Aliquoting is unnecessary for -20°C storage

*** 20ul sizes contain 0.1% BSA

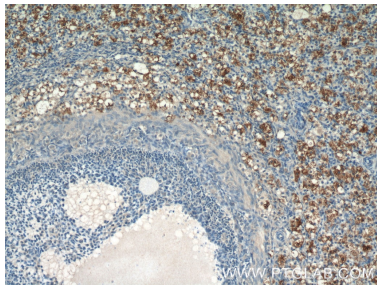
For technical support and original validation data for this product please contact:
T: 1 (888) 4PTGLAB (1-888-478-4522) (toll free in USA), or 1(312) 455-8498 (outside USA)
E: proteintech@ptglab.com
W: ptglab.com

This product is exclusively available under Proteintech Group brand and is not available to purchase from any other manufacturer.

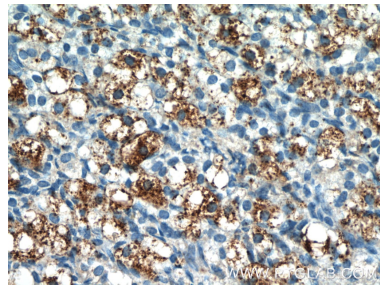
Selected Validation Data



human placenta tissue were subjected to SDS PAGE followed by western blot with 17343-1-AP (PLAC1L Antibody) at dilution of 1:300 incubated at room temperature for 1.5 hours.



Immunohistochemical analysis of paraffin-embedded human ovary tissue slide using 17343-1-AP (PLAC1L Antibody) at dilution of 1:50 (under 10x lens).



Immunohistochemical analysis of paraffin-embedded human ovary tissue slide using 17343-1-AP (PLAC1L Antibody) at dilution of 1:50 (under 40x lens).