

For Research Use Only

SLC25A18 Polyclonal antibody

Catalog Number: 17348-1-AP **1 Publications**



Basic Information

Catalog Number: 17348-1-AP	GenBank Accession Number: BC031644	Purification Method: Antigen affinity purification
Size: 150ul , Concentration: 353 µg/ml by Bradford method using BSA as the standard;	GeneID (NCBI): 83733	Recommended Dilutions: WB 1:500-1:1000 IP 0.5-4.0 ug for IP and 1:500-1:1000 for WB
Source: Rabbit	Full Name: solute carrier family 25 (mitochondrial carrier), member 18	IHC 1:50-1:500
Isotype: IgG	Calculated MW: 315 aa, 34 kDa	
Immunogen Catalog Number: AG11420	Observed MW: 32-35 kDa	

Applications

Tested Applications: IHC, IP, WB, ELISA	Positive Controls:
Cited Applications: IHC	WB : mouse liver tissue, mouse kidney tissue, mouse heart tissue
Species Specificity: human, mouse	IP : mouse brain tissue,
Cited Species: human	IHC : mouse brain tissue,
Note-IHC: suggested antigen retrieval with TE buffer pH 9.0; (*) Alternatively, antigen retrieval may be performed with citrate buffer pH 6.0	

Background Information

SLC25A18, also named as GC 2, belongs to the mitochondrial transporter family (SLC25). It is located in inner mitochondrial membrane which involved in the transport of glutamate either with H⁺ or in exchange for OH⁻. SLC25A18 is highly expressed in brain, testis, lung, kidney, liver, spleen and skeletal muscle. 17348-1-AP antibody detects the band around 32-35 kDa in SDS-PAGE. (PMID: 14598172)

Notable Publications

Author	Pubmed ID	Journal	Application
Li Liang	32509397	Am J Cancer Res	IHC

Storage

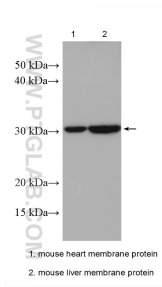
Storage:
Store at -20°C. Stable for one year after shipment.
Storage Buffer:
PBS with 0.02% sodium azide and 50% glycerol pH 7.3.
Aliquoting is unnecessary for -20°C storage

***** 20ul sizes contain 0.1% BSA**

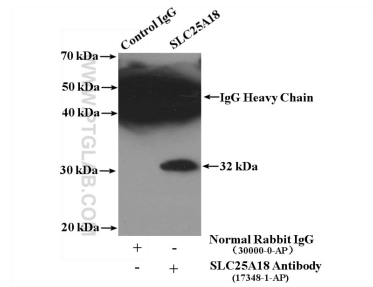
For technical support and original validation data for this product please contact:
T: 1 (888) 4PTGLAB (1-888-478-4522) (toll free in USA), or 1(312) 455-8498 (outside USA) E: proteintech@ptglab.com W: ptglab.com

This product is exclusively available under Proteintech Group brand and is not available to purchase from any other manufacturer.

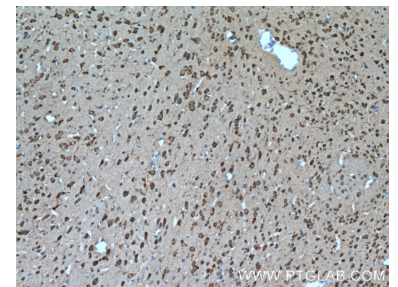
Selected Validation Data



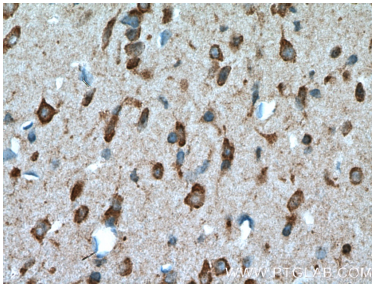
Various lysates were subjected to SDS PAGE followed by western blot with 17348-1-AP (SLC25A18 antibody) at dilution of 1:600 incubated at room temperature for 1.5 hours.



IP Result of anti-SLC25A18 (IP:17348-1-AP, 4ug; Detection:17348-1-AP 1:500) with mouse brain tissue lysate 4400ug.



Immunohistochemical analysis of paraffin-embedded mouse brain tissue slide using 17348-1-AP (SLC25A18 Antibody) at dilution of 1:200 (under 10x lens). Heat mediated antigen retrieval with Tris-EDTA buffer (pH 9.0).



Immunohistochemical analysis of paraffin-embedded mouse brain tissue slide using 17348-1-AP (SLC25A18 Antibody) at dilution of 1:200 (under 40x lens). Heat mediated antigen retrieval with Tris-EDTA buffer (pH 9.0).