

For Research Use Only

Cytokeratin 6B Polyclonal antibody

Catalog Number: 17391-1-AP

Featured Product

2 Publications



Basic Information

Catalog Number:

17391-1-AP

Size:

150ul, Concentration: 213 ug/ml by Bradford method using BSA as the standard;

Source:

Rabbit

Isotype:

IgG

Immunogen Catalog Number:

AG11288

GenBank Accession Number:

BC034535

GeneID (NCBI):

3854

UNIPROT ID:

P04259

Full Name:

keratin 6B

Calculated MW:

564 aa, 60 kDa

Observed MW:

60 kDa

Purification Method:

Antigen affinity purification

Recommended Dilutions:

WB 1:1600-1:5000

IHC 1:50-1:500

IF/ICC 1:200-1:800

Applications

Tested Applications:

WB, IHC, IF/ICC, FC (Intra), ELISA

Cited Applications:

WB, IHC

Species Specificity:

human, mouse, rat

Cited Species:

human, mouse

Note-IHC: suggested antigen retrieval with TE buffer pH 9.0; (*) Alternatively, antigen retrieval may be performed with citrate buffer pH 6.0

Positive Controls:

WB : mouse skin tissue, A431 cells, rat skin tissue

IHC : human lung cancer tissue, human cervical cancer tissue, human breast cancer tissue, human tonsil tissue, human oesophagus tissue

IF/ICC : HeLa cells,

Background Information

Keratins are a large family of proteins that form the intermediate filament cytoskeleton of epithelial cells, which are classified into two major sequence types. Type I keratins are a group of acidic intermediate filament proteins, including K9-K23, and the hair keratins Ha1-Ha8. Type II keratins are the basic or neutral counterparts to the acidic type I keratins, including K1-K8, and the hair keratins, Hb1-Hb6. Keratin 6 is a type II keratin. It is used as a marker for epidermal hyperproliferation and differentiation. Three keratin 6 isoforms were found, keratin 6A, 6B, and 6C. They share more than 99% identical DNA sequence.

Notable Publications

Author	Pubmed ID	Journal	Application
Qiang Song	35794606	J Transl Med	WB
Cui Chang-Yi CY	23439395	J Invest Dermatol	IHC

Storage

Storage:

Store at -20°C. Stable for one year after shipment.

Storage Buffer:

PBS with 0.02% sodium azide and 50% glycerol, pH7.3

Aliquoting is unnecessary for -20°C storage

*** 20ul sizes contain 0.1% BSA

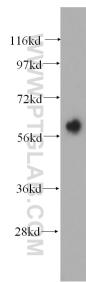
For technical support and original validation data for this product please contact:

T: 1 (888) 4PTGLAB (1-888-478-4522) (toll free in USA), or 1(312) 455-8498 (outside USA)

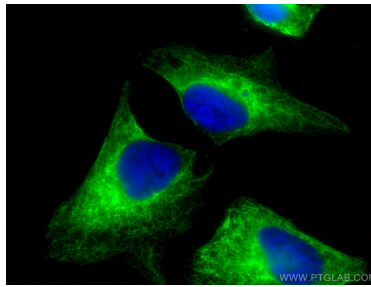
E: proteintech@ptglab.com
W: ptglab.com

This product is exclusively available under Proteintech Group brand and is not available to purchase from any other manufacturer.

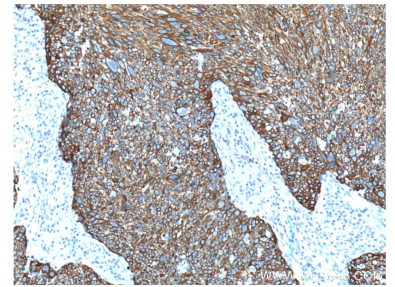
Selected Validation Data



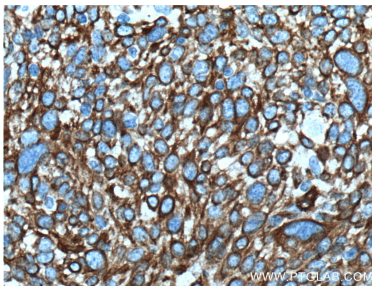
mouse skin tissue were subjected to SDS PAGE followed by western blot with 17391-1-AP (Cytokeratin 6B antibody) at dilution of 1:1000 incubated at room temperature for 1.5 hours.



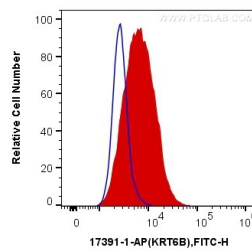
Immunofluorescent analysis of (-20°C Methanol) fixed HeLa cells using Cytokeratin 6B antibody (17391-1-AP) at dilution of 1:400 and CoraLite®488-Conjugated Goat Anti-Rabbit IgG(H+L).



Immunohistochemical analysis of paraffin-embedded human lung cancer tissue slide using 17391-1-AP (Cytokeratin 6B antibody at dilution of 1:1000 (under 10x lens). Heat mediated antigen retrieval with Tris-EDTA buffer (pH 9.0).



Immunohistochemical analysis of paraffin-embedded human lung cancer tissue slide using 17391-1-AP (Cytokeratin 6B antibody at dilution of 1:1000 (under 40x lens). Heat mediated antigen retrieval with Tris-EDTA buffer (pH 9.0).



1X10⁶ HeLa cells were intracellularly stained with 0.2 ug Anti-Human Cytokeratin 6B (17391-1-AP) and CoraLite®488-Conjugated Goat Anti-Rabbit IgG(H+L) at dilution 1:1000 (red), or 0.2 ug Control Antibody. Cells were fixed with 4% PFA and permeabilized with Flow Cytometry Perm Buffer (PF00011-C).