

For Research Use Only

PDCL2 Polyclonal antibody

Catalog Number: 17407-1-AP

3 Publications



Basic Information

Catalog Number:

17407-1-AP

Size:

150ul, Concentration: 600 ug/ml by Nanodrop and 333 ug/ml by Bradford method using BSA as the standard;

Source:

Rabbit

Isotype:

IgG

Immunogen Catalog Number:

AG11427

GenBank Accession Number:

BC034431

GeneID (NCBI):

132954

UNIPROT ID:

Q8N4E4

Full Name:

phosducin-like 2

Calculated MW:

250 aa, 29 kDa

Observed MW:

30-35 kDa

Purification Method:

Antigen affinity purification

Recommended Dilutions:

WB 1:500-1:4000

IHC 1:20-1:200

Applications

Tested Applications:

WB, IHC, ELISA

Cited Applications:

WB, IF, IHC

Species Specificity:

human, mouse, rat

Cited Species:

human, mouse

Note-IHC: suggested antigen retrieval with TE buffer pH 9.0; (*) Alternatively, antigen retrieval may be performed with citrate buffer pH 6.0

Positive Controls:

WB : mouse testis tissue, rat testis tissue

IHC : human kidney tissue, human ovary tissue, human spleen tissue, human testis tissue

Notable Publications

| Author | Pubmed ID | Journal | Application |
|--------------------|-----------|--------------------|-------------|
| Yoshitaka Fujihara | 36278277 | Andrology | WB,IF |
| Yoshitaka Fujihara | 38516277 | PNAS Nexus | WB |
| Yu Yang | 37554526 | Transl Androl Urol | IHC |

Storage

Storage:

Store at -20°C. Stable for one year after shipment.

Storage Buffer:

PBS with 0.02% sodium azide and 50% glycerol pH 7.3.

Aliquoting is unnecessary for -20°C storage

*** 20ul sizes contain 0.1% BSA

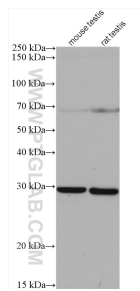
For technical support and original validation data for this product please contact:

T: 1 (888) 4PTGLAB (1-888-478-4522) (toll free in USA), or 1(312) 455-8498 (outside USA)

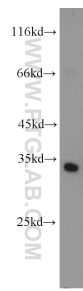
E: proteintech@ptglab.com
W: ptglab.com

This product is exclusively available under Proteintech Group brand and is not available to purchase from any other manufacturer.

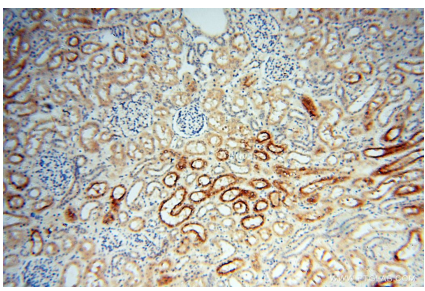
Selected Validation Data



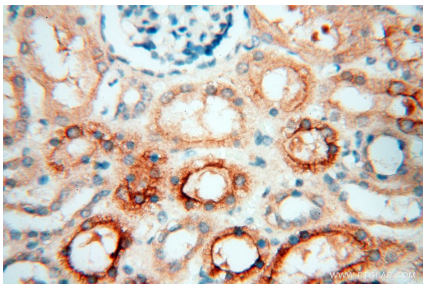
Various lysates were subjected to SDS PAGE followed by western blot with 17407-1-AP (PDCL2 antibody) at dilution of 1:4000 incubated at room temperature for 1.5 hours.



mouse testis tissue were subjected to SDS PAGE followed by western blot with 17407-1-AP (PDCL2 antibody) at dilution of 1:500 incubated at room temperature for 1.5 hours.



Immunohistochemical analysis of paraffin-embedded human kidney using 17407-1-AP (PDCL2 antibody) at dilution of 1:50 (under 10x lens).



Immunohistochemical analysis of paraffin-embedded human kidney using 17407-1-AP (PDCL2 antibody) at dilution of 1:50 (under 40x lens).