

For Research Use Only

PPIL6 Polyclonal antibody

Catalog Number: 17452-1-AP **2 Publications**



Basic Information

Catalog Number: 17452-1-AP	GenBank Accession Number: BC038716	Purification Method: Antigen affinity purification
Size: 150ul , Concentration: 300 µg/ml by Nanodrop and 280 µg/ml by Bradford method using BSA as the standard;	GeneID (NCBI): 285755	Recommended Dilutions: WB 1:500-1:2400 IF 1:50-1:500
Source: Rabbit	Full Name: peptidylprolyl isomerase (cyclophilin)-like 6	
Isotype: IgG	Calculated MW: 311 aa, 35 kDa	
Immunogen Catalog Number: AG11578	Observed MW: 30 kDa	

Applications

Tested Applications: IF, WB, ELISA	Positive Controls: WB : HeLa cells, HepG2 cells IF : HeLa cells,
Cited Applications: WB	
Species Specificity: human, mouse, rat	
Cited Species: mouse	

Background Information

Notable Publications

Author	Pubmed ID	Journal	Application
Yanjie Ma	38038747	Cell Mol Life Sci	WB
Chao Liu	37494937	Curr Biol	WB

Storage

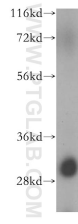
Storage:
Store at -20°C. Stable for one year after shipment.
Storage Buffer:
PBS with 0.02% sodium azide and 50% glycerol pH 7.3.
Aliquoting is unnecessary for -20°C storage

*** 20ul sizes contain 0.1% BSA

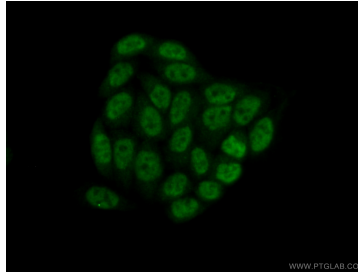
For technical support and original validation data for this product please contact:
T: 1 (888) 4PTGLAB (1-888-478-4522) (toll free in USA), or 1(312) 455-8498 (outside USA)
E: proteintech@ptglab.com
W: ptglab.com

This product is exclusively available under Proteintech Group brand and is not available to purchase from any other manufacturer.

Selected Validation Data



HeLa cells were subjected to SDS PAGE followed by western blot with 17452-1-AP (PPIL6 antibody) at dilution of 1:500 incubated at room temperature for 1.5 hours.



Immunofluorescent analysis of (10% Formaldehyde) fixed HeLa cells using 17452-1-AP (PPIL6 antibody) at dilution of 1:50 and Alexa Fluor 488-conjugated AffiniPure Goat Anti-Rabbit IgG(H+L).