

For Research Use Only

# CLUAP1 Polyclonal antibody

Catalog Number: 17470-1-AP

Featured Product

2 Publications



## Basic Information

<b>Catalog Number:</b> 17470-1-AP	<b>GenBank Accession Number:</b> BC017070	<b>Purification Method:</b> Antigen affinity purification
<b>Size:</b> 150ul , Concentration: 450 µg/ml by Nanodrop and 247 µg/ml by Bradford method using BSA as the standard;	<b>GeneID (NCBI):</b> 23059	<b>Recommended Dilutions:</b> WB 1:500-1:1000 IP 0.5-4.0 ug for IP and 1:500-1:1000 for WB
<b>Source:</b> Rabbit	<b>Full Name:</b> clusterin associated protein 1	<b>IF 1:20-1:200</b>
<b>Isotype:</b> IgG	<b>Calculated MW:</b> 413 aa, 48 kDa	
<b>Immunogen Catalog Number:</b> AG11419	<b>Observed MW:</b> 53 kDa	

## Applications

<b>Tested Applications:</b> IF, IP, WB, ELISA	<b>Positive Controls:</b>
<b>Cited Applications:</b> IF, WB	<b>WB:</b> mouse testis tissue, COLO 320 cells, HepG2 cells, Y79 cells
<b>Species Specificity:</b> human, mouse, rat, Canine	<b>IP:</b> HepG2 cells,
<b>Cited Species:</b> human	<b>IF:</b> MDCK cells,

## Background Information

CLUAP1 (Clusterin-associated protein 1) was originally identified as a protein that interacts with CLU/clusterin, and whose gene is frequently upregulated in colon cancer (PMID: 15480429). Overexpression of CLUAP1 was also observed in osteosarcoma (PMID: 17203229). CLUAP1 is most abundantly expressed in testis among normal tissues (PMID: 15480429; 17203229). Studies reveal that CLUAP1 has a role in ciliogenesis and cilia-dependent development (PMID: 23351563; 23742838; 24970261).

## Notable Publications

Author	Pubmed ID	Journal	Application
Tomoharu Kanie	28625565	Dev Cell	WB
Tina Beyer	29615496	Mol Cell Proteomics	WB, IF

## Storage

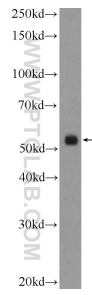
**Storage:**  
Store at -20°C. Stable for one year after shipment.  
**Storage Buffer:**  
PBS with 0.02% sodium azide and 50% glycerol pH 7.3.  
Aliquoting is unnecessary for -20°C storage

\*\*\* 20ul sizes contain 0.1% BSA

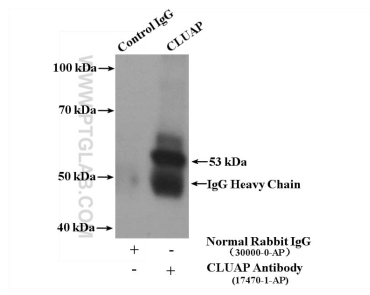
For technical support and original validation data for this product please contact:  
T: 1 (888) 4PTGLAB (1-888-478-4522) (toll free in USA), or 1(312) 455-8498 (outside USA)  
E: proteintech@ptglab.com  
W: ptglab.com

This product is exclusively available under Proteintech Group brand and is not available to purchase from any other manufacturer.

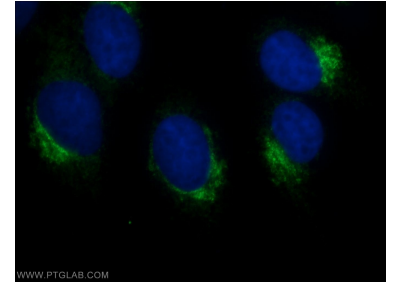
## Selected Validation Data



mouse testis tissue were subjected to SDS PAGE followed by western blot with 17470-1-AP (CLUAP1 Antibody) at dilution of 1:600 incubated at room temperature for 1.5 hours.



IP Result of anti-CLUAP1 (IP:17470-1-AP, 4ug; Detection:17470-1-AP 1:600) with HepG2 cells lysate 2400ug.



Immunofluorescent analysis of MDCK cells using 17470-1-AP (CLUAP1 antibody) at dilution of 1:50 and Alexa Fluor 488-conjugated AffiniPure Goat Anti-Rabbit IgG(H+L).