

For Research Use Only

# TOM1 Polyclonal antibody

Catalog Number: 17506-1-AP

1 Publications



## Basic Information

Catalog Number:

17506-1-AP

Size:

150ul, Concentration: 500 ug/ml by Nanodrop and 367 ug/ml by Bradford method using BSA as the standard;

Source:

Rabbit

Isotype:

IgG

Immunogen Catalog Number:

AG11706

GenBank Accession Number:

BC046151

GeneID (NCBI):

10043

UNIPROT ID:

O60784

Full Name:

target of myb1 (chicken)

Calculated MW:

493 aa, 54 kDa

Observed MW:

54 kDa

Purification Method:

Antigen affinity purification

Recommended Dilutions:

WB 1:500-1:3000

## Applications

Tested Applications:

WB, ELISA

Cited Applications:

IF, IHC

Species Specificity:

human, mouse, rat

Cited Species:

human

Positive Controls:

WB : human liver tissue, HeLa cells, human skeletal muscle tissue, K-562 cells, L02 cells

## Background Information

TOM1 is a member of VHS (VPS-27, Hrs, and STAM)-domain-containing protein family that functions as adaptor proteins in the intracellular trafficking and sorting of plasma membrane proteins. TOM1 colocalized with key proteins of the protein-degradation systems. Recently TOM1 has been reported to be localized in the hallmarks of AD pathology (27206884).

## Notable Publications

Author	Pubmed ID	Journal	Application
Kouki Makioka	27206884	J Neurol Sci	IHC, IF

## Storage

Storage:

Store at -20°C. Stable for one year after shipment.

Storage Buffer:

PBS with 0.02% sodium azide and 50% glycerol pH 7.3.

Aliquoting is unnecessary for -20°C storage

\*\*\* 20ul sizes contain 0.1% BSA

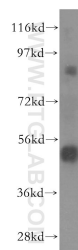
For technical support and original validation data for this product please contact:

T: 1 (888) 4PTGLAB (1-888-478-4522) (toll free in USA), or 1(312) 455-8498 (outside USA)

E: [proteintech@ptglab.com](mailto:proteintech@ptglab.com)  
W: [ptglab.com](http://ptglab.com)

This product is exclusively available under Proteintech Group brand and is not available to purchase from any other manufacturer.

## Selected Validation Data



human liver tissue were subjected to SDS PAGE followed by western blot with 17506-1-AP (TOM1 antibody) at dilution of 1:600 incubated at room temperature for 1.5 hours.