

For Research Use Only

Inhibin beta A-Specific Polyclonal antibody

Catalog Number: 17524-1-AP

4 Publications



Basic Information

Catalog Number:

17524-1-AP

Size:

150ul, Concentration: 400 ug/ml by Nanodrop;

Source:

Rabbit

Isotype:

IgG

GenBank Accession Number:

NM_002192

GeneID (NCBI):

3624

UNIPROT ID:

P08476

Full Name:

inhibin, beta A

Calculated MW:

47 kDa

Observed MW:

47 kDa

Purification Method:

Antigen affinity purification

Recommended Dilutions:

WB: 1:500-1:1000

IP: 0.5-4.0 ug for 1.0-3.0 mg of total protein lysate

Applications

Tested Applications:

WB, IP, ELISA

Cited Applications:

WB, IHC, IF, IP, CoIP

Species Specificity:

human, mouse, rat

Cited Species:

human, rat

Positive Controls:

WB : mouse brain tissue, PC-3 cells, rat brain tissue

IP : rat brain tissue,

Background Information

Inhibin β A (INHBA) is a ligand in the transforming growth factor β (TGF- β) superfamily. Inhibin β A forms a disulfide-linked homo-dimer known as activin A, which has been implicated in multiple biologic processes, including neoplastic progression. The inhibin β A can also bind the β B and α isoforms to form activin AB and inhibin, respectively.

Notable Publications

Author	Pubmed ID	Journal	Application
Guojian Zhou	41799510	Oncol Res	WB,IHC,IF,CoIP
Mako Ueda	41585802	Front Endocrinol (Lausanne)	WB
Chi-Hsueh Yang	41585201	J Dent Sci	WB

Storage

Storage:

Store at -20°C. Stable for one year after shipment.

Storage Buffer:

PBS with 0.02% sodium azide and 50% glycerol, pH7.3

Aliquoting is unnecessary for -20°C storage

*** 20ul sizes contain 0.1% BSA

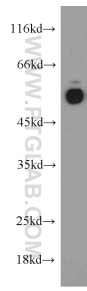
For technical support and original validation data for this product please contact:

T: 1 (888) 4PTGLAB (1-888-478-4522) (toll free in USA), or 1(312) 455-8498 (outside USA)

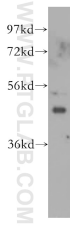
E: proteintech@ptglab.com
W: ptglab.com

This product is exclusively available under Proteintech Group brand and is not available to purchase from any other manufacturer.

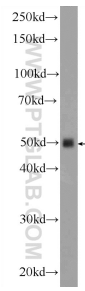
Selected Validation Data



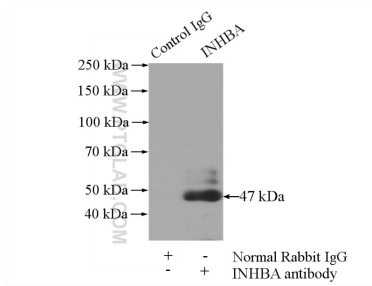
rat brain tissue were subjected to SDS PAGE followed by western blot with 17524-1-AP (Inhibin beta A-Specific antibody) at dilution of 1:300 incubated at room temperature for 1.5 hours.



PC-3 cells were subjected to SDS PAGE followed by western blot with 17524-1-AP (Inhibin beta A-Specific antibody) at dilution of 1:300 incubated at room temperature for 1.5 hours.



mouse brain tissue were subjected to SDS PAGE followed by western blot with 17524-1-AP (Inhibin beta A-Specific antibody) at dilution of 1:600 incubated at room temperature for 1.5 hours.



IP result of anti-Inhibin beta A-Specific (IP:17524-1-AP, 4ug; Detection:17524-1-AP 1:500) with rat brain tissue lysate 4000ug.