

For Research Use Only

EB1 Polyclonal antibody

Catalog Number: 17717-1-AP

Featured Product

5 Publications



Basic Information

Catalog Number: 17717-1-AP	GenBank Accession Number: BC106068	Purification Method: Antigen affinity purification
Size: 150ul, Concentration: 350 µg/ml by Nanodrop and 247 µg/ml by Bradford method using BSA as the standard;	GeneID (NCBI): 22919	Recommended Dilutions: WB 1:500-1:3000 IP 0.5-4.0 ug for IP and 1:500-1:2000 for WB
Source: Rabbit	Full Name: microtubule-associated protein, RP/EB family, member 1	IHC 1:20-1:200
Isotype: IgG	Calculated MW: 268 aa, 30 kDa	
Immunogen Catalog Number: AG12092	Observed MW: 35 kDa	

Applications

Tested Applications:
FC, IHC, IP, WB, ELISA

Cited Applications:
IF

Species Specificity:
human, mouse

Cited Species:
human, mouse

Note-IHC: suggested antigen retrieval with TE buffer pH 9.0; (*) Alternatively, antigen retrieval may be performed with citrate buffer pH 6.0

Positive Controls:

WB: HeLa cells, Jurkat cells, A431 cells

IP: HeLa cells, Caco-2 cells, mouse thymus tissue

IHC: human kidney tissue, human colon cancer tissue, human lung tissue, human placenta tissue, human skin tissue, human spleen tissue, human testis tissue

Background Information

Notable Publications

Author	Pubmed ID	Journal	Application
Peihong Su	32139394	Biol Open	IF
Peihong Su	34004757	Biol Open	IF
Dandan Ma	35119360	Elife	IF

Storage

Storage:

Store at -20°C. Stable for one year after shipment.

Storage Buffer:

PBS with 0.02% sodium azide and 50% glycerol pH 7.3.

Aliquoting is unnecessary for -20°C storage

*** 20ul sizes contain 0.1% BSA

For technical support and original validation data for this product please contact:

T: 1 (888) 4PTGLAB (1-888-478-4522) (toll free in USA), or 1(312) 455-8498 (outside USA)

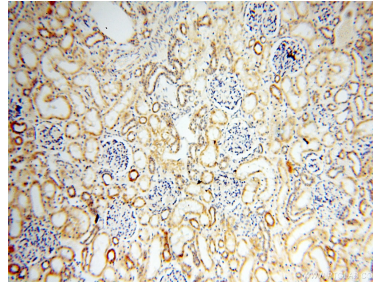
E: proteintech@ptglab.com
W: ptglab.com

This product is exclusively available under Proteintech Group brand and is not available to purchase from any other manufacturer.

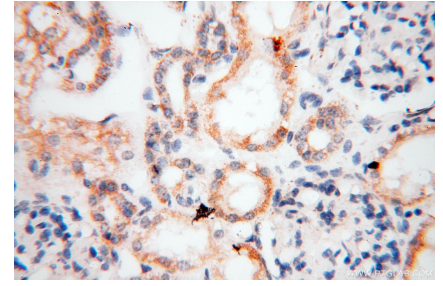
Selected Validation Data



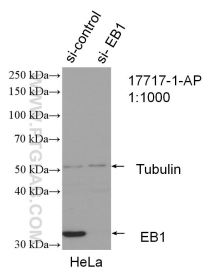
HeLa cells were subjected to SDS PAGE followed by western blot with 17717-1-AP (MAPRE1 antibody) at dilution of 1:500 incubated at room temperature for 1.5 hours.



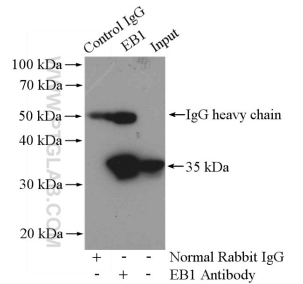
Immunohistochemical analysis of paraffin-embedded human kidney using 17717-1-AP (MAPRE1 antibody) at dilution of 1:100 (under 10x lens).



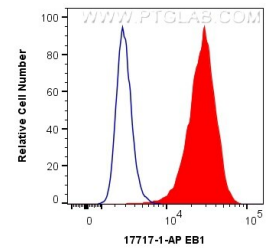
Immunohistochemical analysis of paraffin-embedded human kidney using 17717-1-AP (MAPRE1 antibody) at dilution of 1:100 (under 40x lens).



WB result of EB1 antibody (17717-1-AP; 1:1000; incubated at room temperature for 1.5 hours) with sh-Control and sh-EB1 transfected HeLa cells.



IP Result of anti-EB1 (IP:17717-1-AP, 4ug; Detection:17717-1-AP 1:1000) with HeLa cells lysate 1200ug.



1X10⁶ HeLa cells were intracellularly stained with 0.4 ug Anti-Human EB1 (17717-1-AP) and CoraLite®488-Conjugated AffiniPure Goat Anti-Rabbit IgG(H+L) at dilution 1:1000 (red), or 0.4 ug Control Antibody. Cells were fixed with 4% PFA and permeabilized with Flow Cytometry Perm Buffer (PF00011-C).