

For Research Use Only

# EDC4 Polyclonal antibody

Catalog Number: 17737-1-AP

Featured Product

10 Publications



## Basic Information

### Catalog Number:

17737-1-AP

### Size:

150ul, Concentration: 500 ug/ml by Nanodrop and 227 ug/ml by Bradford method using BSA as the standard;

### Source:

Rabbit

### Isotype:

IgG

### Immunogen Catalog Number:

AG11784

### GenBank Accession Number:

BC064567

### GeneID (NCBI):

23644

### UNIPROT ID:

Q6P2E9

### Full Name:

enhancer of mRNA decapping 4

### Calculated MW:

1401 aa, 152 kDa

### Observed MW:

160 kDa

### Purification Method:

Antigen affinity purification

### Recommended Dilutions:

WB 1:1000-1:6000

IHC 1:300-1:1200

IF/ICC 1:200-1:800

## Applications

### Tested Applications:

WB, IHC, IF/ICC, ELISA

### Cited Applications:

WB, IF

### Species Specificity:

human, mouse, rat

### Cited Species:

human, mouse

**Note-IHC: suggested antigen retrieval with TE buffer pH 9.0; (\*) Alternatively, antigen retrieval may be performed with citrate buffer pH 6.0**

### Positive Controls:

WB : HeLa cells, HepG2 cells

IHC : human liver cancer tissue, human colon cancer tissue

IF/ICC : HeLa cells,

## Notable Publications

Author	Pubmed ID	Journal	Application
Dongsheng Zhai	36088389	Cell Biosci	WB,IF
Tao Liu	34552820	Mol Ther Nucleic Acids	WB
Dongxu Jiang	29537490	FEBS Lett	IF

## Storage

### Storage:

Store at -20°C. Stable for one year after shipment.

### Storage Buffer:

PBS with 0.02% sodium azide and 50% glycerol pH 7.3.

Aliquoting is unnecessary for -20°C storage

\*\*\* 20ul sizes contain 0.1% BSA

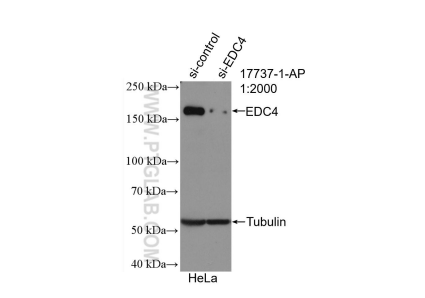
For technical support and original validation data for this product please contact:

T: 1 (888) 4PTGLAB (1-888-478-4522) (toll free in USA), or 1(312) 455-8498 (outside USA)

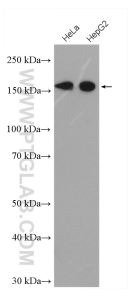
E: [proteintech@ptglab.com](mailto:proteintech@ptglab.com)  
W: [ptglab.com](http://ptglab.com)

This product is exclusively available under Proteintech Group brand and is not available to purchase from any other manufacturer.

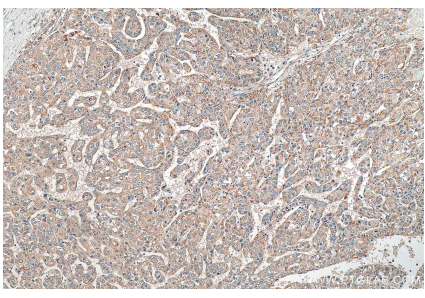
Selected Validation Data



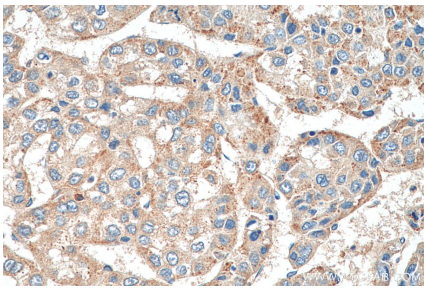
WB result of EDC4 antibody (17737-1-AP; 1:2000; incubated at room temperature for 1.5 hours) with sh-Control and sh-EDC4 transfected HeLa cells.



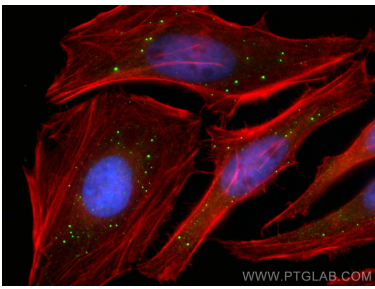
HeLa cells and HepG2 cells were subjected to SDS PAGE followed by western blot with 17737-1-AP (EDC4 antibody) at dilution of 1:3000 incubated at room temperature for 1.5 hours.



Immunohistochemical analysis of paraffin-embedded human liver cancer tissue slide using 17737-1-AP (EDC4 antibody) at dilution of 1:600 (under 10x lens). Heat mediated antigen retrieval with Tris-EDTA buffer (pH 9.0).



Immunohistochemical analysis of paraffin-embedded human liver cancer tissue slide using 17737-1-AP (EDC4 antibody) at dilution of 1:600 (under 40x lens). Heat mediated antigen retrieval with Tris-EDTA buffer (pH 9.0).



Immunofluorescent analysis of (4% PFA) fixed HeLa cells using EDC4 antibody (17737-1-AP) at dilution of 1:400 and Coralite®488-Conjugated AffiniPure Goat Anti-Rabbit IgG(H+L), CL594-phalloidin (red).