

For Research Use Only

# CPSF2 Polyclonal antibody

Catalog Number: 17739-1-AP

2 Publications



## Basic Information

### Catalog Number:

17739-1-AP

### Size:

150ul, Concentration: 450 ug/ml by Nanodrop and 307 ug/ml by Bradford method using BSA as the standard;

### Source:

Rabbit

### Isotype:

IgG

### Immunogen Catalog Number:

AG11950

### GenBank Accession Number:

BC070095

### GeneID (NCBI):

53981

### UNIPROT ID:

Q9P2I0

### Full Name:

cleavage and polyadenylation specific factor 2, 100kDa

### Calculated MW:

782 aa, 88 kDa

### Observed MW:

100 kDa

### Purification Method:

Antigen affinity purification

### Recommended Dilutions:

WB 1:1000-1:4000

IP 0.5-4.0 ug for 1.0-3.0 mg of total protein lysate

IHC 1:20-1:200

IF/ICC 1:20-1:200

## Applications

### Tested Applications:

WB, IHC, IF/ICC, IP, ELISA

### Cited Applications:

WB, ColP

### Species Specificity:

human, mouse, rat

### Cited Species:

human

**Note-IHC: suggested antigen retrieval with TE buffer pH 9.0; (\*) Alternatively, antigen retrieval may be performed with citrate buffer pH 6.0**

### Positive Controls:

WB : HeLa cells, human brain tissue, mouse brain tissue

IP : HeLa cells,

IHC : human brain tissue,

IF/ICC : HepG2 cells,

## Notable Publications

Author	Pubmed ID	Journal	Application
Geneva R LaForce	35139363	Neuron	ColP
Peng Lin	38503731	Cell Discov	WB

## Storage

### Storage:

Store at -20°C. Stable for one year after shipment.

### Storage Buffer:

PBS with 0.02% sodium azide and 50% glycerol pH 7.3.

Aliquoting is unnecessary for -20°C storage

\*\*\* 20ul sizes contain 0.1% BSA

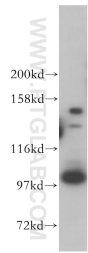
For technical support and original validation data for this product please contact:

T: 1 (888) 4PTGLAB (1-888-478-4522) (toll free in USA), or 1(312) 455-8498 (outside USA)

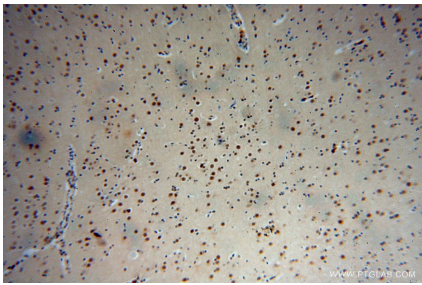
E: [proteintech@ptglab.com](mailto:proteintech@ptglab.com)  
W: [ptglab.com](http://ptglab.com)

This product is exclusively available under Proteintech Group brand and is not available to purchase from any other manufacturer.

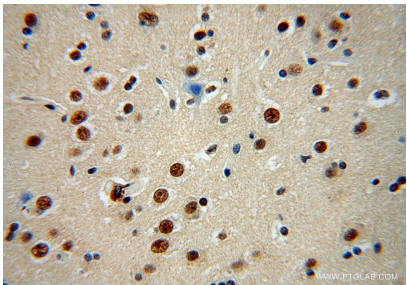
Selected Validation Data



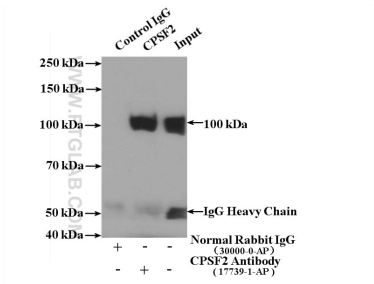
HeLa cells were subjected to SDS PAGE followed by western blot with 17739-1-AP (CPSF2 antibody) at dilution of 1:800 incubated at room temperature for 1.5 hours.



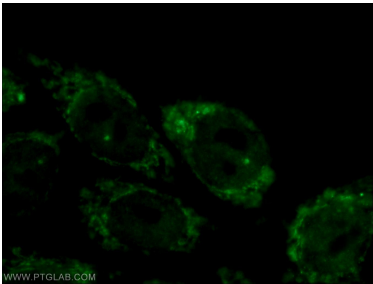
Immunohistochemical analysis of paraffin-embedded human brain using 17739-1-AP (CPSF2 antibody) at dilution of 1:100 (under 10x lens).



Immunohistochemical analysis of paraffin-embedded human brain using 17739-1-AP (CPSF2 antibody) at dilution of 1:100 (under 40x lens).



IP result of anti-CPSF2 (IP:17739-1-AP, 4ug; Detection:17739-1-AP 1:1000) with HeLa cells lysate 4000ug.



Immunofluorescent analysis of HepG2 cells using 17739-1-AP (CPSF2 antibody) at dilution of 1:50 and Alexa Fluor 488-conjugated Goat Anti-Rabbit IgG(H+L).