

For Research Use Only

# NFE2L3 Polyclonal antibody

Catalog Number: 17745-1-AP

3 Publications



## Basic Information

### Catalog Number:

17745-1-AP

### Size:

150ul, Concentration: 850 µg/ml by Nanodrop and 453 µg/ml by Bradford method using BSA as the standard;

### Source:

Rabbit

### Isotype:

IgG

### Immunogen Catalog Number:

AG12005

### GenBank Accession Number:

BC068455

### GeneID (NCBI):

9603

### UNIPROT ID:

Q9Y4A8

### Full Name:

nuclear factor (erythroid-derived 2)-like 3

### Calculated MW:

694 aa, 76 kDa

### Observed MW:

76 kDa

### Purification Method:

Antigen affinity purification

### Recommended Dilutions:

WB 1:500-1:1000

IF/ICC 1:50-1:500

## Applications

### Tested Applications:

WB, IF, ELISA

### Cited Applications:

WB

### Species Specificity:

human

### Cited Species:

human

### Positive Controls:

WB : human placenta tissue,

IF/ICC : HepG2 cells,

## Notable Publications

Author	Pubmed ID	Journal	Application
Guohong Huang	34966429	J Oncol	WB
Tingting Chen	36108571	Comput Methods Programs Biomed	WB
Ping Xing	39443820	Cancer Biol Ther	WB

## Storage

### Storage:

Store at -20°C. Stable for one year after shipment.

### Storage Buffer:

PBS with 0.02% sodium azide and 50% glycerol pH 7.3.

Aliquoting is unnecessary for -20°C storage

\*\*\* 20ul sizes contain 0.1% BSA

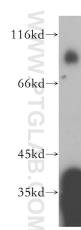
For technical support and original validation data for this product please contact:

T: 1 (888) 4PTGLAB (1-888-478-4522) (toll free in USA), or 1(312) 455-8498 (outside USA)

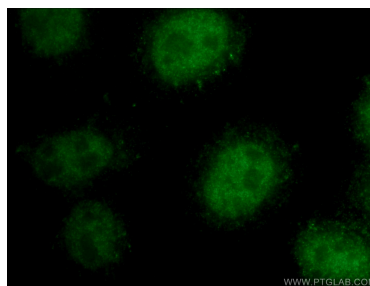
E: [proteintech@ptglab.com](mailto:proteintech@ptglab.com)  
W: [ptglab.com](http://ptglab.com)

This product is exclusively available under Proteintech Group brand and is not available to purchase from any other manufacturer.

## Selected Validation Data



human placenta tissue were subjected to SDS PAGE followed by western blot with 17745-1-AP (NFE2L3 antibody) at dilution of 1:500 incubated at room temperature for 1.5 hours.



Immunofluorescent analysis of (4% PFA) fixed HepG2 cells using 17745-1-AP (NFE2L3 antibody) at dilution of 1:50 and Alexa Fluor 488-conjugated Goat Anti-Rabbit IgG(H+L).