

For Research Use Only

# LSG1 Polyclonal antibody

Catalog Number: 17750-1-AP

Featured Product

1 Publications



## Basic Information

<b>Catalog Number:</b> 17750-1-AP	<b>GenBank Accession Number:</b> BC068500	<b>Purification Method:</b> Antigen affinity purification
<b>Size:</b> 150ul , Concentration: 400 µg/ml by Nanodrop and 253 µg/ml by Bradford method using BSA as the standard;	<b>GeneID (NCBI):</b> 55341	<b>Recommended Dilutions:</b> WB 1:500-1:1000 IP 0.5-4.0 ug for IP and 1:500-1:1000 for WB
<b>Source:</b> Rabbit	<b>Full Name:</b> large subunit GTPase 1 homolog (S. cerevisiae)	<b>IHC 1:20-1:200</b>
<b>Isotype:</b> IgG	<b>Calculated MW:</b> 658 aa, 75 kDa	
<b>Immunogen Catalog Number:</b> AG12016	<b>Observed MW:</b> 75 kDa	

## Applications

<b>Tested Applications:</b> IHC, IP, WB, ELISA	<b>Positive Controls:</b> WB : HeLa cells, IP : HeLa cells, IHC : human testis tissue, human kidney tissue, human lung tissue, human ovary tissue, human placenta tissue, human spleen tissue
<b>Cited Applications:</b> IF, WB	
<b>Species Specificity:</b> human	
<b>Cited Species:</b> human	

**Note-IHC: suggested antigen retrieval with TE buffer pH 9.0; (\*) Alternatively, antigen retrieval may be performed with citrate buffer pH 6.0**

## Background Information

### Notable Publications

Author	Pubmed ID	Journal	Application
Asimina Pantazi	31148378	Aging Cell	WB,IF

## Storage

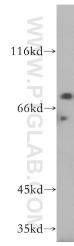
**Storage:**  
Store at -20°C. Stable for one year after shipment.  
**Storage Buffer:**  
PBS with 0.02% sodium azide and 50% glycerol pH 7.3.  
Aliquoting is unnecessary for -20°C storage

\*\*\* 20ul sizes contain 0.1% BSA

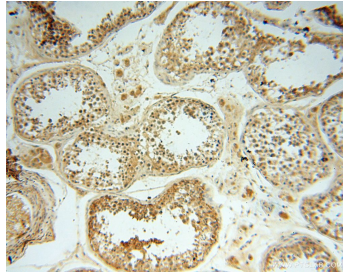
For technical support and original validation data for this product please contact:  
T: 1 (888) 4PTGLAB (1-888-478-4522) (toll free in USA), or 1(312) 455-8498 (outside USA)  
E: proteintech@ptglab.com  
W: ptglab.com

This product is exclusively available under Proteintech Group brand and is not available to purchase from any other manufacturer.

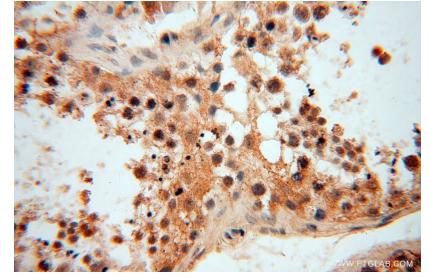
## Selected Validation Data



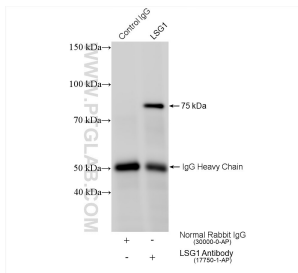
HeLa cells were subjected to SDS PAGE followed by western blot with 17750-1-AP (LSG1 antibody) at dilution of 1:500 incubated at room temperature for 1.5 hours.



Immunohistochemical analysis of paraffin-embedded human testis using 17750-1-AP (LSG1 antibody) at dilution of 1:50 (under 10x lens).



Immunohistochemical analysis of paraffin-embedded human testis using 17750-1-AP (LSG1 antibody) at dilution of 1:50 (under 40x lens).



IP result of anti-LSG1(IP:17750-1-AP, 4ug;  
Detection:17750-1-AP 1:500) with HeLa cells lysate  
1400 ug.