

# ANT1/2 Polyclonal ANTIBODY

Catalog Number: 17796-1-AP

1 Publications

## Basic Information

**Catalog Number:**  
17796-1-AP

**Size:**  
68 µg/150 µl

**Source:**  
Rabbit

**Isotype:**  
IgG

**Purification Method:**  
Antigen affinity purification

**Immunogen Catalog Number:**  
AG11956

**GenBank Accession Number:**  
BC056160

**GeneID (NCBI):**  
292

**Full Name:**  
solute carrier family 25 (mitochondrial carrier, adenine nucleotide translocator), member 5

**Calculated MW:**  
298aa, 33 kDa

**Observed MW:**  
30-32 kDa

**Recommended Dilutions:**

WB 1:200-1:1000

IHC 1:20-1:200

## Applications

**Tested Applications:**  
ELISA, IHC, WB

**Cited Applications:**  
WB

**Species Specificity:**  
human,mouse,rat

**Cited Species:**  
mouse

**Positive Controls:**

WB : mouse brain tissue;

IHC : human kidney tissue;

## Background Information

Adenine nucleotide translocators (ANTs) are mitochondrial carrier proteins that exchange ATP and ADP between the cytoplasm and the mitochondrial matrix. Four isoforms of ANT were identified: ANT1 (encoded by SLC25A4) is highly expressed in different tissues; ANT2 (encoded by SLC25A5) is predominantly expressed in proliferating, regenerating, or undifferentiated cells; ANT3 is ubiquitously expressed; ANT4 is mainly expressed in testis and germ cells. This antibody recognizes both of ANT1 and ANT2. The predicted molecular weight of ANT1/2 protein is around 32 kDa. While 60 kDa protein can also be observed, which has been proposed as the dimer of ANT1/2. (22423112)

## Notable Publications

Author	Pubmed ID	Journal	Application
Maria Eirini Terzenidou	28376086	PLoS Genet	WB

## Storage

**Storage:**

Store at -20°C. Stable for one year after shipment.

**Storage Buffer:**

PBS with 0.02% sodium azide and 50% glycerol pH 7.3.

Aliquoting is unnecessary for -20°C storage

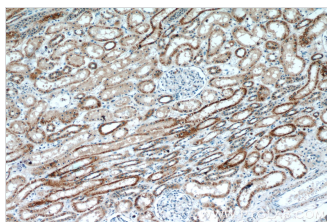
For technical support and original validation data for this product please contact:

T: 1 (888) 4PTGLAB (1-888-478-4522) (toll free in USA), or 1(312) 455-8498 (outside USA)

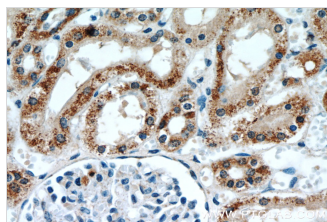
E: [proteintech@ptglab.com](mailto:proteintech@ptglab.com)  
W: [ptglab.com](http://ptglab.com)

This product is exclusively available under Proteintech Group brand and is not available to purchase from any other manufacturer.

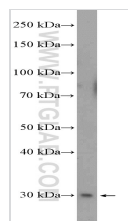
## Selected Validation Data



Immunohistochemistry of paraffin-embedded human kidney slide using 17796-1-AP (ANTI/2 Antibody) at dilution of 1:50



Immunohistochemistry of paraffin-embedded human kidney slide using 17796-1-AP (ANTI/2 Antibody) at dilution of 1:50



mouse brain tissue were subjected to SDS PAGE followed by western blot with 17796-1-AP (ANTI/2 Antibody) at dilution of 1:300 incubated at room temperature for 1.5 hours