

For Research Use Only

INPP5E Polyclonal antibody

Catalog Number: 17797-1-AP

Featured Product

55 Publications



Basic Information

Catalog Number:

17797-1-AP

Size:

150ul, Concentration: 550 ug/ml by Nanodrop;

Source:

Rabbit

Isotype:

IgG

Immunogen Catalog Number:

AG11959

GenBank Accession Number:

BC028032

GeneID (NCBI):

56623

UNIPROT ID:

Q9NRR6

Full Name:

inositol polyphosphate-5-phosphatase, 72 kDa

Calculated MW:

644 aa, 70 kDa

Observed MW:

64-66 kDa

Purification Method:

Antigen affinity purification

Recommended Dilutions:

WB: 1:500-1:2000

IP: 0.5-4.0 ug for 1.0-3.0 mg of total protein lysate

IHC: 1:20-1:200

IF/ICC: 1:20-1:200

Applications

Tested Applications:

WB, IHC, IF/ICC, IP, ELISA

Cited Applications:

WB, IHC, IF, CoIP

Species Specificity:

human, mouse, rat

Cited Species:

human, mouse, zebrafish

Positive Controls:

WB: SH-SY5Y cells, HEK-293 cells, mouse brain tissue, mouse testis tissue

IP: HEK-293 cells,

IHC: human testis tissue, human kidney tissue, human placenta tissue, human spleen tissue

IF/ICC: hTERT-RPE1 cells,

Note-IHC: suggested antigen retrieval with TE buffer pH 9.0; (*) Alternatively, antigen retrieval may be performed with citrate buffer pH 6.0

Background Information

INPP5E (72 kDa inositol polyphosphate 5-phosphatase) converts phosphatidylinositol 3,4,5-trisphosphate (PtdIns 3,4,5-P₃) to PtdIns-P₂. In mouse, highest protein expression was in brain, heart, and testis, with lower expression in thymus and lung, and very little expression in kidney, spleen, and liver (PMID:10764818). Defects in INPP5E are the cause of Joubert syndrome type 1 (JBT51) and mental retardation-truncal obesity-retinal dystrophy-micropenis (MORMS) (PMID:19668215). It has 2 isoforms with the molecular mass of 66 kDa and 70 kDa.

Notable Publications

Author	Pubmed ID	Journal	Application
Sumaya Alkanderi	30269812	Am J Hum Genet	IF
Dario Cilleros-Rodriguez	36063381	Elife	IF
Christin Hanke-Gogokhia	29089384	J Biol Chem	

Storage

Storage:

Store at -20°C. Stable for one year after shipment.

Storage Buffer:

PBS with 0.02% sodium azide and 50% glycerol, pH7.3

Aliquoting is unnecessary for -20°C storage

*** 20ul sizes contain 0.1% BSA

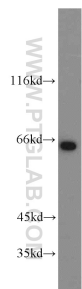
For technical support and original validation data for this product please contact:

T: 1 (888) 4PTGLAB (1-888-478-4522) (toll free in USA), or 1(312) 455-8498 (outside USA)

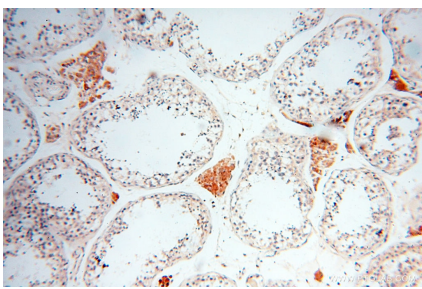
E: proteintech@ptglab.com
W: ptglab.com

This product is exclusively available under Proteintech Group brand and is not available to purchase from any other manufacturer.

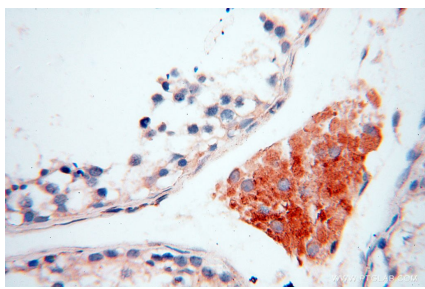
Selected Validation Data



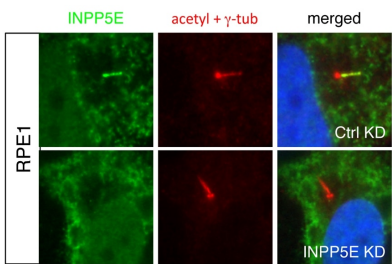
SH-SY5Y cells were subjected to SDS PAGE followed by western blot with 17797-1-AP (INPP5E antibody) at dilution of 1:1000 incubated at room temperature for 1.5 hours.



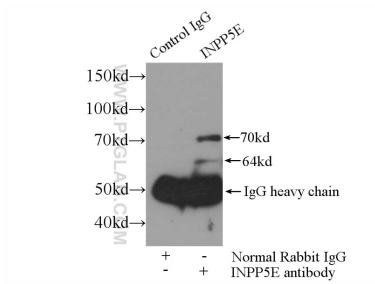
Immunohistochemical analysis of paraffin-embedded human testis using 17797-1-AP (INPP5E antibody) at dilution of 1:50 (under 10x lens).



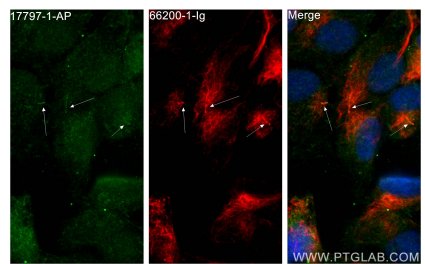
Immunohistochemical analysis of paraffin-embedded human testis using 17797-1-AP (INPP5E antibody) at dilution of 1:50 (under 40x lens).



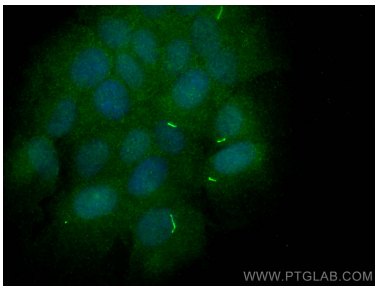
IF result of ciliary INPP5E in human hTERT-RPE1 cell: Upper is from control siRNA transfected cells and bottom is from INPP5E siRNA transfected cells. 17797-1-AP specifically recognizes the ciliary INPP5E (From Dr.Seongjin Seo).



IP result of anti-INPP5E (IP:17797-1-AP, 3ug; Detection:17797-1-AP 1:1000) with HEK-293 cells lysate 1000ug.



Immunofluorescent analysis of (4% PFA) fixed hTERT-RPE1 cells using INPP5E antibody (17797-1-AP) at dilution of 1:200 and CoraLite®488-Conjugated AffiniPure Goat Anti-Rabbit IgG(H+L), acetylated Tubulin(Lys40) antibody (66200-1-Ig, Clone: 7E5H8, red).



Immunofluorescent analysis of (4% PFA) fixed hTERT-RPE1 cells using INPP5E antibody (17797-1-AP) at dilution of 1:200 and CoraLite®488-Conjugated AffiniPure Goat Anti-Rabbit IgG(H+L).