

For Research Use Only

# GCS1 Polyclonal antibody

Catalog Number: 17859-1-AP

Featured Product

8 Publications



## Basic Information

### Catalog Number:

17859-1-AP

### Size:

150ul, Concentration: 350 ug/ml by Nanodrop;

### Source:

Rabbit

### Isotype:

IgG

### Immunogen Catalog Number:

AG12321

### GenBank Accession Number:

BC028337

### GeneID (NCBI):

7841

### UNIPROT ID:

Q13724

### Full Name:

mannosyl-oligosaccharide glucosidase

### Calculated MW:

837 aa, 92 kDa

### Observed MW:

80-92 kDa

### Purification Method:

Antigen affinity purification

### Recommended Dilutions:

WB 1:500-1:2000

IHC 1:20-1:200

## Applications

### Tested Applications:

WB, IHC, ELISA

### Cited Applications:

WB, IF, IHC, CoIP

### Species Specificity:

human, mouse

### Cited Species:

human, rat

### Positive Controls:

WB: COLO 320 cells,

IHC: human small intestine tissue, human liver tissue

**Note-IHC: suggested antigen retrieval with TE buffer pH 9.0; (\*) Alternatively, antigen retrieval may be performed with citrate buffer pH 6.0**

## Background Information

MOGS (Mannosyl-oligosaccharide glucosidase), also known as GCS1, is the first enzyme in the N-linked oligosaccharide processing pathway. The enzyme cleaves the distal alpha-1,2-linked glucose residue from the Glc(3)-Man(9)-GlcNAc(2) oligosaccharide precursor (PMID: 38187061). The resulting Glc(2)-Man(9)-GlcNAc(2) intermediate is then further modified by glucosidase II and several ER- and Golgi-resident mannosidases and glycosyltransferases, finally yielding a complex array of glycan structures (PMID: 3896128). MOGS has two isoforms, and it is located in the lumen of the endoplasmic reticulum.

## Notable Publications

Author	Pubmed ID	Journal	Application
Yong Huang	32938225	Am J Physiol Cell Physiol	WB
Jianyu Ma	31635221	Int J Mol Sci	WB
Emily J Sherman	35231079	PLoS Pathog	WB

## Storage

### Storage:

Store at -20°C. Stable for one year after shipment.

### Storage Buffer:

PBS with 0.02% sodium azide and 50% glycerol pH 7.3.

Aliquoting is unnecessary for -20°C storage

\*\*\* 20ul sizes contain 0.1% BSA

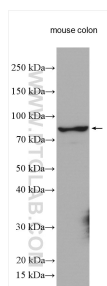
For technical support and original validation data for this product please contact:

T: 1 (888) 4PTGLAB (1-888-478-4522) (toll free in USA), or 1(312) 455-8498 (outside USA)

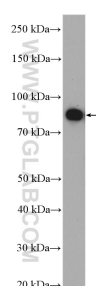
E: [proteintech@ptglab.com](mailto:proteintech@ptglab.com)  
W: [ptglab.com](http://ptglab.com)

This product is exclusively available under Proteintech Group brand and is not available to purchase from any other manufacturer.

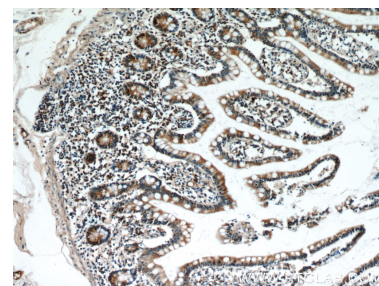
## Selected Validation Data



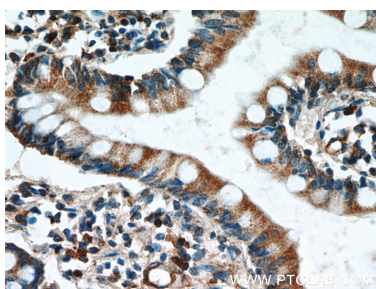
mouse colon tissue were subjected to SDS PAGE followed by western blot with 17859-1-AP (GCS1 antibody) at dilution of 1:1000 incubated at room temperature for 1.5 hours.



COLO 320 cells were subjected to SDS PAGE followed by western blot with 17859-1-AP (GCS1 antibody) at dilution of 1:1000 incubated at room temperature for 1.5 hours.



Immunohistochemical analysis of paraffin-embedded human small intestine using 17859-1-AP (GCS1 antibody) at dilution of 1:100 (under 10x lens).



Immunohistochemical analysis of paraffin-embedded human small intestine using 17859-1-AP (GCS1 antibody) at dilution of 1:100 (under 40x lens).