

For Research Use Only

CYP2D6/7 Polyclonal antibody

Catalog Number: 17868-1-AP

8 Publications



Basic Information

Catalog Number:

17868-1-AP

Size:

150ul, Concentration: 400 ug/ml by Nanodrop and 353 ug/ml by Bradford method using BSA as the standard;

Source:

Rabbit

Isotype:

IgG

Immunogen Catalog Number:

AG12351

GenBank Accession Number:

BC075023

GeneID (NCBI):

1565

UNIPROT ID:

P10635

Full Name:

cytochrome P450, family 2, subfamily D, polypeptide 6

Calculated MW:

497 aa, 56 kDa

Observed MW:

48-56 kDa

Purification Method:

Antigen affinity purification

Recommended Dilutions:

WB 1:2000-1:12000

IHC 1:200-1:600

Applications

Tested Applications:

WB, IHC, ELISA

Cited Applications:

WB, IHC

Species Specificity:

human, mouse, rat

Cited Species:

human, mouse, rat

Note-IHC: suggested antigen retrieval with TE buffer pH 9.0; (*) Alternatively, antigen retrieval may be performed with citrate buffer pH 6.0

Positive Controls:

WB: mouse liver tissue, rat liver tissue

IHC: human liver cancer tissue, human liver tissue, human kidney tissue

Background Information

CYP2D6 (Cytochrome P450 2D6) is also named as CYP2DL1 and belongs to the cytochrome P450 family. It is a monooxygenase that involved in the metabolism of drugs such as antiarrhythmics, adrenoceptor antagonists, and tricyclic antidepressants. CYP2D6 is responsible for the metabolism of many drugs and environmental chemicals that it oxidizes. It has 2 isoforms produced by alternative splicing with the molecular weight of 56 kDa and 50 kDa. This antibody can recognize human CYP2D6/7, mouse CYP2D3/4/9/10/22/26, rat CYP2D1/3/4/10/26, due to the high homology.

Notable Publications

Author	Pubmed ID	Journal	Application
Zhenyu Wang	31588244	Theranostics	IHC
Hongfang Li	33273809	Drug Des Devel Ther	WB
Congcong Yu	32393428	Pharmazie	WB

Storage

Storage:

Store at -20°C. Stable for one year after shipment.

Storage Buffer:

PBS with 0.02% sodium azide and 50% glycerol pH 7.3.

Aliquoting is unnecessary for -20°C storage

*** 20ul sizes contain 0.1% BSA

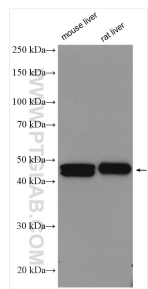
For technical support and original validation data for this product please contact:

T: 1 (888) 4PTGLAB (1-888-478-4522) (toll free in USA), or 1(312) 455-8498 (outside USA)

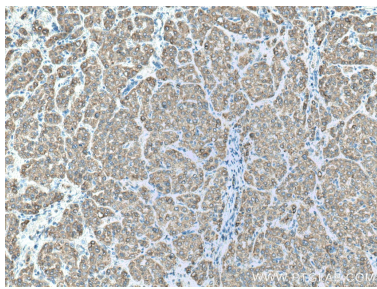
E: proteintech@ptglab.com
W: ptglab.com

This product is exclusively available under Proteintech Group brand and is not available to purchase from any other manufacturer.

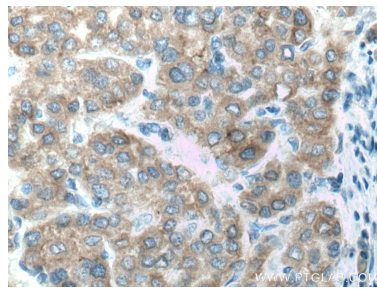
Selected Validation Data



Various lysates were subjected to SDS PAGE followed by western blot with 17868-1-AP (CYP2D6/7 antibody) at dilution of 1:6000 incubated at room temperature for 1.5 hours.



Immunohistochemical analysis of paraffin-embedded human liver cancer tissue slide using 17868-1-AP (CYP2D6 antibody) at dilution of 1:600 (under 10x lens. Heat mediated antigen retrieval with Tris-EDTA buffer (pH 9.0).



Immunohistochemical analysis of paraffin-embedded human liver cancer tissue slide using 17868-1-AP (CYP2D6 antibody) at dilution of 1:600 (under 40x lens. Heat mediated antigen retrieval with Tris-EDTA buffer (pH 9.0).