

For Research Use Only

MMP8 Polyclonal antibody

Catalog Number: 17874-1-AP

Featured Product

14 Publications



Basic Information

Catalog Number:

17874-1-AP

Size:

150ul, Concentration: 700 ug/ml by Nanodrop;

Source:

Rabbit

Isotype:

IgG

Immunogen Catalog Number:

AG12367

GenBank Accession Number:

BC074988

GeneID (NCBI):

4317

UNIPROT ID:

P22894

Full Name:

matrix metalloproteinase 8 (neutrophil collagenase)

Calculated MW:

467 aa, 53 kDa

Observed MW:

60-70 kDa

Purification Method:

Antigen affinity purification

Recommended Dilutions:

WB 1:500-1:2400

IHC 1:20-1:200

IF/ICC 1:200-1:800

Applications

Tested Applications:

WB, IHC, IF/ICC, ELISA

Cited Applications:

WB, IHC, IF

Species Specificity:

human, mouse, rat

Cited Species:

human, mouse, rat

Note-IHC: suggested antigen retrieval with TE buffer pH 9.0; (*) Alternatively, antigen retrieval may be performed with citrate buffer pH 6.0

Positive Controls:

WB : HepG2 cells, Jurkat cells, mouse liver tissue

IHC : human placenta tissue, human kidney tissue, human ovary tissue, human spleen tissue, human testis tissue

IF/ICC : HepG2 cells,

Background Information

MMP8 (Matrix metalloproteinase-8) is an enzyme that degrades fibrillar collagens imparting strength to the fetal membranes, is expressed by leukocytes and chorionic cytotrophoblast cells (PMID:15367487). Purified human neutrophil MMP-8 with proMMP-8 at 70-75 kDa and active enzyme at 65 kDa and amniotic proenzyme and active enzyme at 65 and 50 kDa, respectively (PMID: 28772283, PMID:15042023).

Notable Publications

Author	Pubmed ID	Journal	Application
Junxiong Zhao	36302628	Korean J Physiol Pharmacol	WB
Congshan Jiang	31275058	Mediators Inflamm	WB
Yaron Vagima	25974210	PLoS Pathog	WB

Storage

Storage:

Store at -20°C. Stable for one year after shipment.

Storage Buffer:

PBS with 0.02% sodium azide and 50% glycerol pH 7.3.

Aliquoting is unnecessary for -20°C storage

*** 20ul sizes contain 0.1% BSA

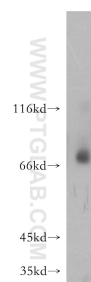
For technical support and original validation data for this product please contact:

T: 1 (888) 4PTGLAB (1-888-478-4522) (toll free in USA), or 1(312) 455-8498 (outside USA)

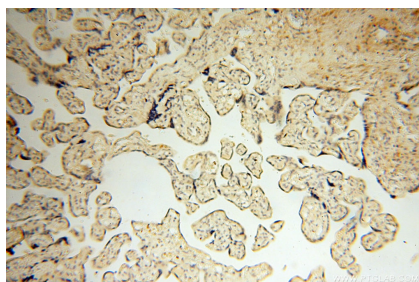
E: proteintech@ptglab.com
W: ptglab.com

This product is exclusively available under Proteintech Group brand and is not available to purchase from any other manufacturer.

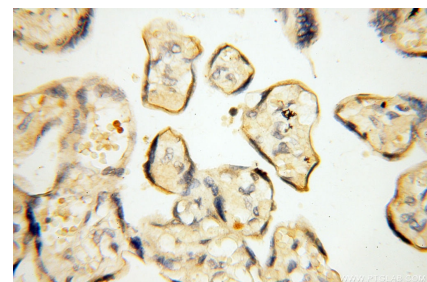
Selected Validation Data



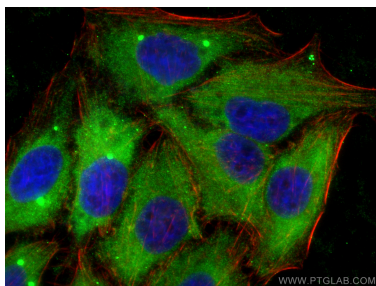
HepG2 cells were subjected to SDS PAGE followed by western blot with 17874-1-AP (MMP8 antibody) at dilution of 1:500 incubated at room temperature for 1.5 hours.



Immunohistochemical analysis of paraffin-embedded human placenta using 17874-1-AP (MMP8 antibody) at dilution of 1:100 (under 10x lens).



Immunohistochemical analysis of paraffin-embedded human placenta using 17874-1-AP (MMP8 antibody) at dilution of 1:100 (under 40x lens).



Immunofluorescent analysis of (-20°C Ethanol) fixed HepG2 cells using MMP8 antibody (17874-1-AP) at dilution of 1:400 and CoraLite®488-Conjugated AffiniPure Goat Anti-Rabbit IgG(H+L), (red).