

For Research Use Only

# DRD1 Polyclonal antibody

Catalog Number: 17934-1-AP

Featured Product

20 Publications



## Basic Information

### Catalog Number:

17934-1-AP

### Size:

150ul, Concentration: 800 ug/ml by Nanodrop;

### Source:

Rabbit

### Isotype:

IgG

### Immunogen Catalog Number:

AG12366

### GenBank Accession Number:

BC074978

### GeneID (NCBI):

1812

### UNIPROT ID:

P21728

### Full Name:

dopamine receptor D1

### Calculated MW:

446 aa, 49 kDa

### Observed MW:

50-75 kDa

### Purification Method:

Antigen affinity purification

### Recommended Dilutions:

WB 1:500-1:2000

## Applications

### Tested Applications:

WB, ELISA

### Cited Applications:

WB

### Species Specificity:

human, mouse, rat

### Cited Species:

human, mouse, rat

### Positive Controls:

WB : 37°C incubated mouse brain tissue,

## Background Information

Dopamine is a neurotransmitter that plays a crucial role in physical and mental health, such as cardiovascular, hormonal, renal, and central nervous systems (PMID: 29220802). Five subtypes of mammalian dopamine receptors are grouped into two classes, the D1- and D2-like classes. The D1-like class includes D1 and D5 receptors whereas the D2-like class includes D2, D3, D4 subtypes (PMID: 9457173). Dopamine receptor D1 (DRD1) is the most abundant form of dopamine receptor in the central nervous system. DRD1 stimulates adenylate cyclase, modulates D2 receptor activity, regulates neuron growth and differentiation, and mediates several behavioral responses (PMID: 1977312). DRD1 has a calculated molecular weight of 49 kDa, larger apparent molecular weight of 60-80 kDa may be due to glycosylation (PMID: 1281547; 23821371).

## Notable Publications

Author	Pubmed ID	Journal	Application
Soheil Kazemi Roodsari	35625897	Biomedicines	WB
Kyungri Kim	33801790	Genes (Basel)	WB
Yiqing Yan	25594175	Cell	WB

## Storage

### Storage:

Store at -20°C. Stable for one year after shipment.

### Storage Buffer:

PBS with 0.02% sodium azide and 50% glycerol pH 7.3.

Aliquoting is unnecessary for -20°C storage

\*\*\* 20ul sizes contain 0.1% BSA

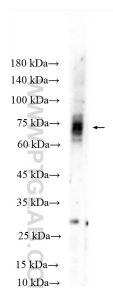
For technical support and original validation data for this product please contact:

T: 1 (888) 4PTGLAB (1-888-478-4522) (toll free in USA), or 1(312) 455-8498 (outside USA)

E: [proteintech@ptglab.com](mailto:proteintech@ptglab.com)  
W: [ptglab.com](http://ptglab.com)

This product is exclusively available under Proteintech Group brand and is not available to purchase from any other manufacturer.

## Selected Validation Data



37°C incubated mouse brain tissue were subjected to SDS PAGE followed by western blot with 17934-1-AP (DRD1 antibody) at dilution of 1:1000 incubated at room temperature for 1.5 hours.