

For Research Use Only

PPCS Polyclonal antibody

Catalog Number: 18001-1-AP **1 Publications**



Basic Information

Catalog Number: 18001-1-AP	GenBank Accession Number: BC106064	Purification Method: Antigen affinity purification
Size: 150ul , Concentration: 240 µg/ml by Nanodrop and 240 µg/ml by Bradford method using BSA as the standard;	GeneID (NCBI): 79717	Recommended Dilutions: WB 1:500-1:1000 IHC 1:20-1:200
Source: Rabbit	Full Name: phosphopantothenoylcysteine synthetase	
Isotype: IgG	Calculated MW: 311 aa, 34 kDa	
Immunogen Catalog Number: AG12491	Observed MW: 34 kDa	

Applications

Tested Applications: IHC, WB, ELISA	Positive Controls: WB : HeLa cells,
Cited Applications: IF	IHC : human kidney tissue, human lung tissue, human ovary tissue, human placenta tissue, human spleen tissue, human testis tissue
Species Specificity: human, mouse, rat	
Cited Species: human	

Note-IHC: suggested antigen retrieval with TE buffer pH 9.0; (*) Alternatively, antigen retrieval may be performed with citrate buffer pH 6.0

Background Information

PPCS(Phosphopantothenate--cysteine ligase) is also named as COAB and belongs to the PPC synthetase family. It catalyzes the first step in the biosynthesis of coenzyme A from vitamin B5, where cysteine is conjugated to 4'-phosphopantothenate to form 4-phosphopantothenoylcysteine. It can be exist as a homodimer(PMID:12906824).

Notable Publications

Author	Pubmed ID	Journal	Application
Jovana Baković	33498827	Int J Mol Sci	IF

Storage

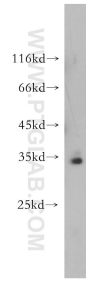
Storage:
Store at -20°C. Stable for one year after shipment.
Storage Buffer:
PBS with 0.02% sodium azide and 50% glycerol pH 7.3.
Aliquoting is unnecessary for -20°C storage

***** 20ul sizes contain 0.1% BSA**

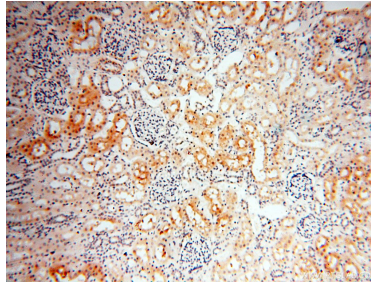
For technical support and original validation data for this product please contact:
T: 1 (888) 4PTGLAB (1-888-478-4522) (toll free in USA), or 1(312) 455-8498 (outside USA)
E: proteintech@ptglab.com
W: ptglab.com

This product is exclusively available under Proteintech Group brand and is not available to purchase from any other manufacturer.

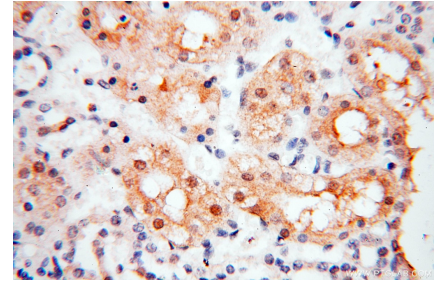
Selected Validation Data



HeLa cells were subjected to SDS PAGE followed by western blot with 18001-1-AP (PPCS antibody) at dilution of 1:500 incubated at room temperature for 1.5 hours.



Immunohistochemical analysis of paraffin-embedded human kidney using 18001-1-AP (PPCS antibody) at dilution of 1:100 (under 10x lens).



Immunohistochemical analysis of paraffin-embedded human kidney using 18001-1-AP (PPCS antibody) at dilution of 1:100 (under 40x lens).