

For Research Use Only

CREBL2 Polyclonal antibody

Catalog Number: 18007-1-AP



Basic Information

Catalog Number: 18007-1-AP	GenBank Accession Number: BC106052	Purification Method: Antigen affinity purification
Size: 150ul , Concentration: 500 µg/ml by Nanodrop and 333 µg/ml by Bradford method using BSA as the standard;	GeneID (NCBI): 1389	Recommended Dilutions: WB 1:500-1:1000
Source: Rabbit	Full Name: cAMP responsive element binding protein-like 2	
Isotype: IgG	Calculated MW: 120 aa, 14 kDa	
Immunogen Catalog Number: AG12504	Observed MW: 17 kDa	

Applications

Tested Applications: WB,ELISA	Positive Controls: WB : human liver tissue, mouse liver tissue
Species Specificity: human, mouse, rat	

Background Information

Storage

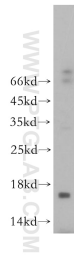
Storage:
Store at -20°C. Stable for one year after shipment.
Storage Buffer:
PBS with 0.02% sodium azide and 50% glycerol pH 7.3.
Aliquoting is unnecessary for -20°C storage

*** 20ul sizes contain 0.1% BSA

For technical support and original validation data for this product please contact:
T: 1 (888) 4PTGLAB (1-888-478-4522) (toll free in USA), or 1(312) 455-8498 (outside USA) E: proteintech@ptglab.com
W: ptglab.com

This product is exclusively available under Proteintech Group brand and is not available to purchase from any other manufacturer.

Selected Validation Data



human liver tissue were subjected to SDS PAGE followed by western blot with 18007-1-AP (CREBL2 antibody) at dilution of 1:500 incubated at room temperature for 1.5 hours.