

For Research Use Only

Neprilysin/CD10 Polyclonal antibody

Catalog Number: 18008-1-AP

25 Publications



Basic Information

Catalog Number:

18008-1-AP

Size:

150ul, Concentration: 600 ug/ml by Nanodrop;

Source:

Rabbit

Isotype:

IgG

Immunogen Catalog Number:

AG12506

GenBank Accession Number:

BC106070

GeneID (NCBI):

4311

UNIPROT ID:

P08473

Full Name:

membrane metallo-endoropeptidase

Calculated MW:

80aa, 9 kDa; 750aa, 85 kDa

Observed MW:

100 kDa

Purification Method:

Antigen affinity purification

Recommended Dilutions:

WB: 1:500-1:2000

IP: 0.5-4.0 ug for 1.0-3.0 mg of total protein lysate

IHC: 1:50-1:500

IF-P: 1:50-1:500

Applications

Tested Applications:

WB, IHC, IF-P, IP, ELISA

Cited Applications:

WB, IHC, IF

Species Specificity:

human, mouse, rat

Cited Species:

human, mouse, rat

Positive Controls:

WB: mouse kidney tissue, human kidney tissue, rat kidney tissue

IP: Raji cells,

IHC: human kidney tissue, human renal cell carcinoma tissue

IF-P: human kidney tissue,

Note-IHC: suggested antigen retrieval with TE buffer pH 9.0; (*) Alternatively, antigen retrieval may be performed with citrate buffer pH 6.0

Background Information

MME is also names as neprilysin, CALLA, NEP, SFE, CD10 and belongs to the peptidase M13 family. It is a glycoprotein that is particularly abundant in kidney, where it is present on the brush border of proximal tubules and on glomerular epithelium. CD10 has been considered a useful marker in the diagnosis of renal carcinomas, because of its expression in clear cell and papillary renal cell carcinomas and its absence in chromophobe renal cell carcinomas (PMID:15286660).

Notable Publications

Author	Pubmed ID	Journal	Application
Ke-Wei Chang	30217465	Neurochem Int	WB
Jensen José Ricardo JR	24148528	BMC Genomics	IHC
Hui Zeng	32473218	Int J Biol Macromol	WB

Storage

Storage:

Store at -20°C. Stable for one year after shipment.

Storage Buffer:

PBS with 0.02% sodium azide and 50% glycerol, pH7.3

Aliquoting is unnecessary for -20°C storage

*** 20ul sizes contain 0.1% BSA

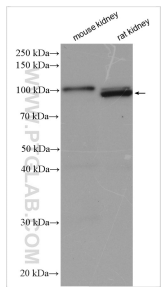
For technical support and original validation data for this product please contact:

T: 1 (888) 4PTGLAB (1-888-478-4522) (toll free in USA), or 1(312) 455-8498 (outside USA)

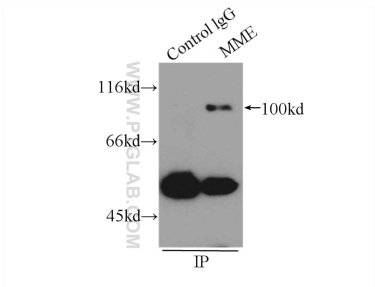
E: proteintech@ptglab.com
W: ptglab.com

This product is exclusively available under Proteintech Group brand and is not available to purchase from any other manufacturer.

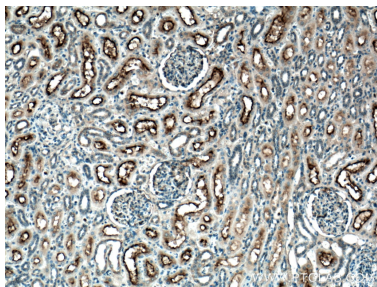
Selected Validation Data



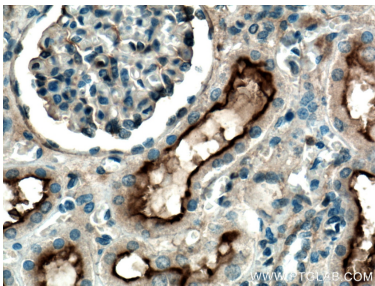
Various lysates were subjected to SDS PAGE followed by western blot with 18008-1-AP (Neprilysin/CD10 antibody) at dilution of 1:1000 incubated at room temperature for 1.5 hours.



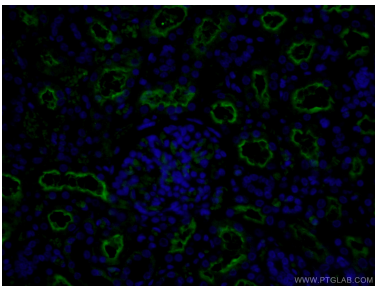
IP result of anti-Neprilysin/CD10 (IP:18008-1-AP, 3ug; Detection:18008-1-AP 1:500) with Raji cells lysate 2400ug.



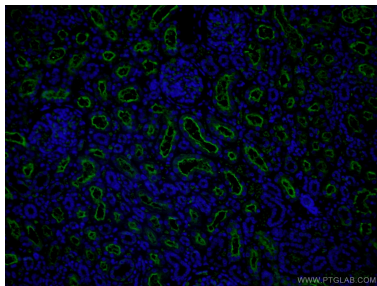
Immunohistochemical analysis of paraffin-embedded human kidney tissue slide using 18008-1-AP (Neprilysin/CD10 antibody) at dilution of 1:200 (under 10x lens. Heat mediated antigen retrieval with Tris-EDTA buffer (pH 9.0).



Immunohistochemical analysis of paraffin-embedded human kidney tissue slide using 18008-1-AP (Neprilysin/CD10 antibody) at dilution of 1:200 (under 40x lens. Heat mediated antigen retrieval with Tris-EDTA buffer (pH 9.0).



Immunofluorescent analysis of (4% PFA) fixed human kidney tissue using 18008-1-AP (Neprilysin/CD10 antibody) at dilution of 1:50 and Alexa Fluor 488-conjugated AffiniPure Goat Anti-Rabbit IgG(H+L).



Immunofluorescent analysis of (4% PFA) fixed human kidney tissue using 18008-1-AP (Neprilysin/CD10 antibody) at dilution of 1:50 and Alexa Fluor 488-conjugated AffiniPure Goat Anti-Rabbit IgG(H+L).