

For Research Use Only

ATPAF1 Polyclonal antibody

Catalog Number: 18016-1-AP

3 Publications



Basic Information

Catalog Number: 18016-1-AP	GenBank Accession Number: BC071731	Purification Method: Antigen affinity purification
Size: 150ul, Concentration: 700 µg/ml by Nanodrop;	GeneID (NCBI): 64756	Recommended Dilutions: WB 1:500-1:4000
Source: Rabbit	Full Name: ATP synthase mitochondrial F1 complex assembly factor 1	
Isotype: IgG	Calculated MW: 328 aa, 36 kDa	
Immunogen Catalog Number: AG12557	Observed MW: 31 kDa	

Applications

Tested Applications: WB, ELISA	Positive Controls: WB : HEK-293 cells, PC-3 cells, mouse heart tissue, mouse kidney tissue, rat heart tissue,
Cited Applications: WB	
Species Specificity: human, mouse, rat	
Cited Species: human, mouse	

Background Information

Notable Publications

Author	Pubmed ID	Journal	Application
Yu Sun	31184932	Am J Physiol Endocrinol Metab	WB
Han Yan	36470472	Metabolism	WB
Jiatong Xu	32824856	Int J Mol Sci	WB

Storage

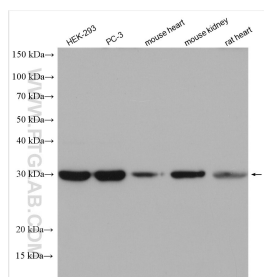
Storage:
Store at -20°C. Stable for one year after shipment.
Storage Buffer:
PBS with 0.02% sodium azide and 50% glycerol pH 7.3.
Aliquoting is unnecessary for -20°C storage

*** 20ul sizes contain 0.1% BSA

For technical support and original validation data for this product please contact:
T: 1 (888) 4PTGLAB (1-888-478-4522) (toll free in USA), or 1(312) 455-8498 (outside USA)
E: proteintech@ptglab.com
W: ptglab.com

This product is exclusively available under Proteintech Group brand and is not available to purchase from any other manufacturer.

Selected Validation Data



Various lysates were subjected to SDS PAGE followed by western blot with 18016-1-AP (ATPAF1 antibody) at dilution of 1:2000 incubated at room temperature for 1.5 hours.