

For Research Use Only

BOLA1 Polyclonal antibody

Catalog Number: 18017-1-AP **1 Publications**



Basic Information

Catalog Number: 18017-1-AP	GenBank Accession Number: BC063405	Purification Method: Antigen affinity purification
Size: 150ul , Concentration: 600 µg/ml by Nanodrop and 453 µg/ml by Bradford method using BSA as the standard;	GeneID (NCBI): 51027	Recommended Dilutions: WB 1:500-1:2000 IP 0.5-4.0 ug for IP and 1:500-1:1000 for WB
Source: Rabbit	Full Name: bolA homolog 1 (E. coli)	IHC 1:20-1:200 IF 1:20-1:200
Isotype: IgG	Calculated MW: 137 aa, 14 kDa	
Immunogen Catalog Number: AG12565	Observed MW: 14 kDa	

Applications

Tested Applications: IF, IHC, IP, WB, ELISA	Positive Controls: WB : HEK-293 cells, HepG2 cells
Cited Applications: WB	IP : HepG2 cells,
Species Specificity: human, mouse, rat	IHC : human lung tissue, human heart tissue, human kidney tissue, human spleen tissue
Cited Species: human	IF : HepG2 cells,

Note-IHC: suggested antigen retrieval with TE buffer pH 9.0; (*) Alternatively, antigen retrieval may be performed with citrate buffer pH 6.0

Background Information

Notable Publications

Author	Pubmed ID	Journal	Application
Dong Wang	36017386	Biomed Res Int	WB

Storage

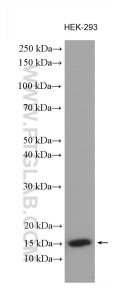
Storage:
Store at -20°C. Stable for one year after shipment.
Storage Buffer:
PBS with 0.02% sodium azide and 50% glycerol pH 7.3.
Aliquoting is unnecessary for -20°C storage

*** 20ul sizes contain 0.1% BSA

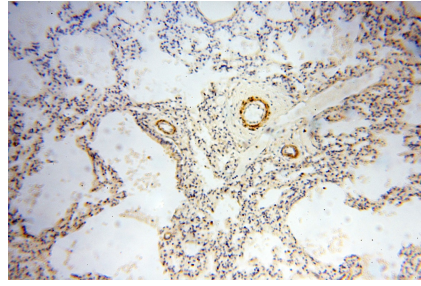
For technical support and original validation data for this product please contact:
T: 1 (888) 4PTGLAB (1-888-478-4522) (toll free in USA), or 1(312) 455-8498 (outside USA) E: proteintech@ptglab.com W: ptglab.com

This product is exclusively available under Proteintech Group brand and is not available to purchase from any other manufacturer.

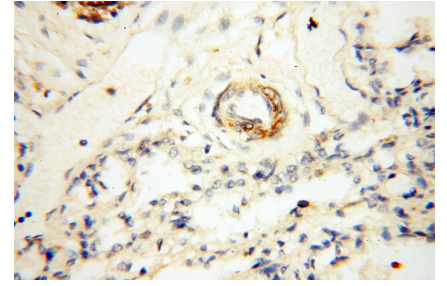
Selected Validation Data



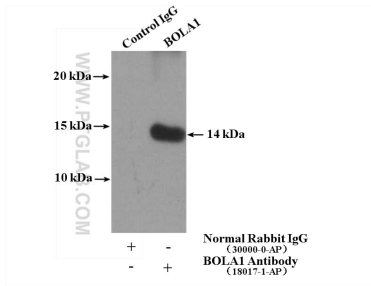
HEK-293 cells were subjected to SDS PAGE followed by western blot with 18017-1-AP (BOLA1 antibody) at dilution of 1:1000 incubated at room temperature for 1.5 hours.



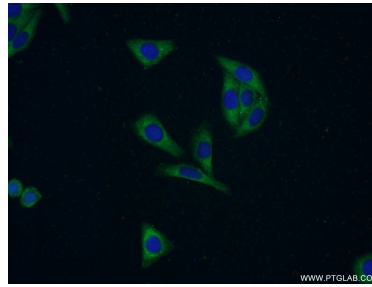
Immunohistochemical analysis of paraffin-embedded human lung using 18017-1-AP (BOLA1 antibody) at dilution of 1:100 (under 10x lens).



Immunohistochemical analysis of paraffin-embedded human lung using 18017-1-AP (BOLA1 antibody) at dilution of 1:100 (under 40x lens).



IP Result of anti-BOLA1 (IP:18017-1-AP, 4ug; Detection:18017-1-AP 1:800) with HepG2 cells lysate 3480ug.



Immunofluorescent analysis of HepG2 cells using 18017-1-AP (BOLA1 antibody) at dilution of 1:50 and Alexa Fluor 488-conjugated AffiniPure Goat Anti-Rabbit IgG(H+L).