

For Research Use Only

DNA Ligase I Polyclonal antibody

Catalog Number: 18051-1-AP

Featured Product

10 Publications



Basic Information

Catalog Number: 18051-1-AP	GenBank Accession Number: BC108318	Purification Method: Antigen affinity purification
Size: 150ul , Concentration: 500 µg/ml by Nanodrop;	GeneID (NCBI): 3978	Recommended Dilutions: WB 1:500-1:2000 IP 0.5-4.0 ug for 1.0-3.0 mg of total protein lysate IHC 1:20-1:200
Source: Rabbit	Full Name: Ligase I, DNA, ATP-dependent	
Isotype: IgG	Calculated MW: 919 aa, 102 kDa	
Immunogen Catalog Number: AG12508	Observed MW: 130 kDa	

Applications

Tested Applications: IHC, IP, WB, ELISA	Positive Controls:
Cited Applications: IHC, IP, WB	WB : HeLa cells, A431 cells, Jurkat cells
Species Specificity: human, mouse, rat	IP : HepG2 cells,
Cited Species: human, rat, mouse	IHC : human spleen tissue, human brain tissue, human placenta tissue, human testis tissue
Note-IHC: suggested antigen retrieval with TE buffer pH 9.0; (*) Alternatively, antigen retrieval may be performed with citrate buffer pH 6.0	

Background Information

DNA ligase I (LIG1) joins DNA strand breaks during DNA replication and repair transactions and contributes to genome integrity. 18051-1-AP is raised against the C-terminal 670-919 aa residues of the human DNA ligase 1.

Notable Publications

Author	Pubmed ID	Journal	Application
Robert M Vaughan	33097091	Epigenetics Chromatin	WB
Yuangao Wang	34671165	Nature	WB
Patrick Maffucci	30395541	J Clin Invest	WB,IP

Storage

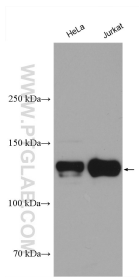
Storage:
Store at -20°C. Stable for one year after shipment.
Storage Buffer:
PBS with 0.02% sodium azide and 50% glycerol pH 7.3.
Aliquoting is unnecessary for -20°C storage

*** 20ul sizes contain 0.1% BSA

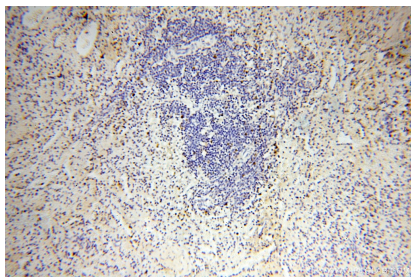
For technical support and original validation data for this product please contact:
T: 1 (888) 4PTGLAB (1-888-478-4522) (toll free in USA), or 1(312) 455-8498 (outside USA)
E: proteintech@ptglab.com
W: ptglab.com

This product is exclusively available under Proteintech Group brand and is not available to purchase from any other manufacturer.

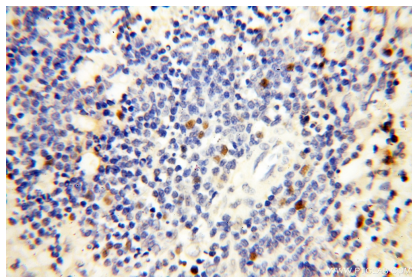
Selected Validation Data



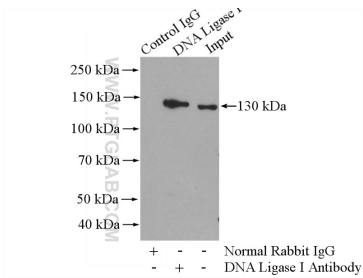
Various lysates were subjected to SDS PAGE followed by western blot with 18051-1-AP (DNA Ligase I antibody) at dilution of 1:1000 incubated at room temperature for 1.5 hours.



Immunohistochemical analysis of paraffin-embedded human spleen using 18051-1-AP (DNA Ligase I antibody) at dilution of 1:100 (under 10x lens).



Immunohistochemical analysis of paraffin-embedded human spleen using 18051-1-AP (DNA Ligase I antibody) at dilution of 1:100 (under 40x lens).



IP Result of anti-DNA Ligase I (IP:18051-1-AP, 4ug; Detection:18051-1-AP 1:500) with HepG2 cells lysate 3200ug.