

For Research Use Only

KLHL20 Polyclonal antibody

Catalog Number: 18111-1-AP



Basic Information

| | | |
|--|---|--|
| Catalog Number: 18111-1-AP | GenBank Accession Number: BC063418 | Purification Method: Antigen affinity purification |
| Size: 150ul , Concentration: 350 µg/ml by Nanodrop and 173 µg/ml by Bradford method using BSA as the standard; | GeneID (NCBI): 27252 | Recommended Dilutions: WB 1:500-1:1000 IHC 1:20-1:200 |
| Source: Rabbit | Full Name: kelch-like 20 (Drosophila) | |
| Isotype: IgG | Calculated MW: 609 aa, 68 kDa | |
| Immunogen Catalog Number: AG12567 | Observed MW: 65-67 kDa | |

Applications

| | |
|--|---|
| Tested Applications: IHC, WB, ELISA | Positive Controls: WB : HEK-293 cells, mouse liver tissue IHC : human kidney tissue, |
| Species Specificity: human, mouse, rat | |
| Note-IHC: suggested antigen retrieval with TE buffer pH 9.0; (*) Alternatively, antigen retrieval may be performed with citrate buffer pH 6.0 | |

Background Information

Storage

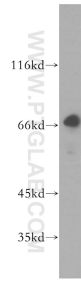
Storage:
Store at -20°C. Stable for one year after shipment.
Storage Buffer:
PBS with 0.02% sodium azide and 50% glycerol pH 7.3.
Aliquoting is unnecessary for -20°C storage

*** 20ul sizes contain 0.1% BSA

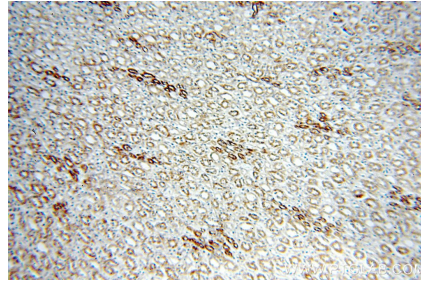
For technical support and original validation data for this product please contact:
T: 1 (888) 4PTGLAB (1-888-478-4522) (toll free in USA), or 1(312) 455-8498 (outside USA)
E: proteintech@ptglab.com
W: ptglab.com

This product is exclusively available under Proteintech Group brand and is not available to purchase from any other manufacturer.

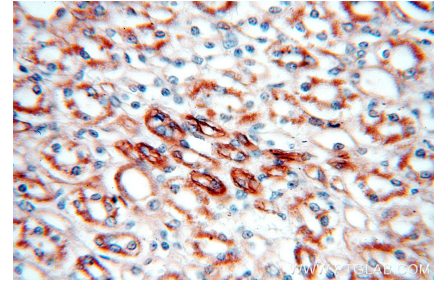
Selected Validation Data



HEK-293 cells were subjected to SDS PAGE followed by western blot with 18111-1-AP (KLHL20 antibody) at dilution of 1:500 incubated at room temperature for 1.5 hours.



Immunohistochemical analysis of paraffin-embedded human kidney using 18111-1-AP (KLHL20 antibody) at dilution of 1:50 (under 10x lens).



Immunohistochemical analysis of paraffin-embedded human kidney using 18111-1-AP (KLHL20 antibody) at dilution of 1:50 (under 40x lens).