

For Research Use Only

LYN Polyclonal antibody

Catalog Number: 18135-1-AP

2 Publications



Basic Information

Catalog Number:

18135-1-AP

Size:

150ul, Concentration: 400 ug/ml by Nanodrop and 393 ug/ml by Bradford method using BSA as the standard;

Source:

Rabbit

Isotype:

IgG

Immunogen Catalog Number:

AG12723

GenBank Accession Number:

BC075002

GeneID (NCBI):

4067

UNIPROT ID:

P07948

Full Name:

v-src-1 Yamaguchi sarcoma viral related oncogene homolog

Calculated MW:

512 aa, 59 kDa

Observed MW:

53-56 kDa, 66-70 kDa

Purification Method:

Antigen affinity purification

Recommended Dilutions:

WB 1:500-1:2000

IP 0.5-4.0 ug for 1.0-3.0 mg of total protein lysate

IHC 1:20-1:200

IF/ICC 1:20-1:200

Applications

Tested Applications:

WB, IHC, IF/ICC, FC (Intra), IP, ELISA

Cited Applications:

WB, IHC, IF

Species Specificity:

human

Cited Species:

human

Positive Controls:

WB : HeLa cells, HL-60 cells, Jurkat cells, K-562 cells, L02 cells

IP : HeLa cells,

IHC : human kidney tissue, human hepatocirrhosis tissue

IF/ICC : HeLa cells,

Note-IHC: suggested antigen retrieval with TE buffer pH 9.0; (*) Alternatively, antigen retrieval may be performed with citrate buffer pH 6.0

Background Information

LYN, also named as JTK8, p53Lyn and p56Lyn, belongs to the protein kinase superfamily, Tyr protein kinase family and SRC subfamily. It is a non-receptor tyrosine-protein kinase that transmits signals from cell surface receptors and plays an important role in the regulation of innate and adaptive immune responses, hematopoiesis, responses to growth factors and cytokines, integrin signaling, but also responses to DNA damage and genotoxic agents. LYN is a component of the mTOR (mammalian target of rapamycin) pathway.

Notable Publications

Author	Pubmed ID	Journal	Application
Chonghua Jiang	35186945	Front Cell Dev Biol	IHC
Céline Gaudel	39033988	J Invest Dermatol	WB,IF

Storage

Storage:

Store at -20°C. Stable for one year after shipment.

Storage Buffer:

PBS with 0.02% sodium azide and 50% glycerol pH 7.3.

Aliquoting is unnecessary for -20°C storage

*** 20ul sizes contain 0.1% BSA

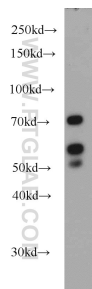
For technical support and original validation data for this product please contact:

T: 1 (888) 4PTGLAB (1-888-478-4522) (toll free in USA), or 1(312) 455-8498 (outside USA)

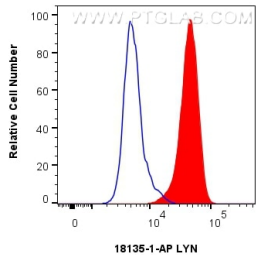
E: proteintech@ptglab.com
W: ptglab.com

This product is exclusively available under Proteintech Group brand and is not available to purchase from any other manufacturer.

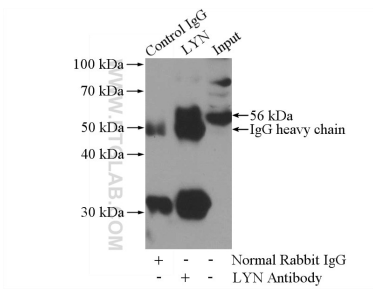
Selected Validation Data



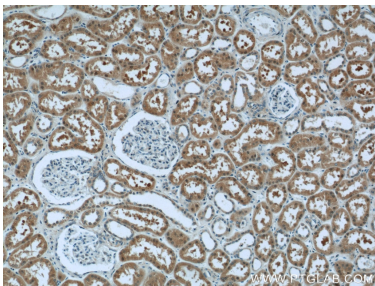
HeLa cells were subjected to SDS PAGE followed by western blot with 18135-1-AP (LYN antibody) at dilution of 1:1000 incubated at room temperature for 1.5 hours.



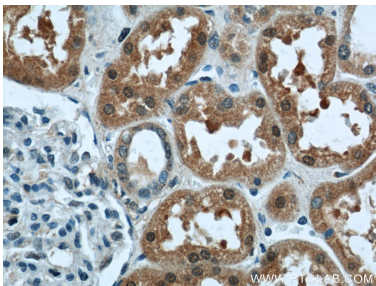
1x10⁶ HeLa cells were intracellularly stained with 0.25 ug LYN Polyclonal antibody (18135-1-AP) and CoraLite®488-Conjugated Goat Anti-Rabbit IgG(H+L) (SA00013-2)(red), or 0.25 ug Rabbit IgG control Rabbit PolyAb (30000-0-AP) (blue). Cells were fixed and permeabilized with Transcription Factor Staining Buffer Kit (PF00011).



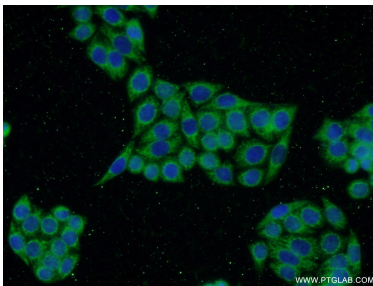
IP result of anti-LYN (IP:18135-1-AP, 4ug; Detection:18135-1-AP 1:1000) with HeLa cells lysate 1200ug.



Immunohistochemical analysis of paraffin-embedded human kidney tissue slide using 18135-1-AP (LYN Antibody) at dilution of 1:50 (under 10x lens).



Immunohistochemical analysis of paraffin-embedded human kidney tissue slide using 18135-1-AP (LYN Antibody) at dilution of 1:50 (under 40x lens).



Immunofluorescent analysis of HeLa cells using 18135-1-AP (LYN antibody) at dilution of 1:50 and Alexa Fluor 488-conjugated AffiniPure Goat Anti-Rabbit IgG(H+L).