

For Research Use Only

CPLX2 Polyclonal antibody

Catalog Number: 18149-1-AP

Featured Product

10 Publications



Basic Information

Catalog Number:

18149-1-AP

Size:

150ul, Concentration: 650 ug/ml by Nanodrop and 333 ug/ml by Bradford method using BSA as the standard;

Source:

Rabbit

Isotype:

IgG

Immunogen Catalog Number:

AG12838

GenBank Accession Number:

BC093706

GeneID (NCBI):

10814

UNIPROT ID:

Q6PUV4

Full Name:

complexin 2

Calculated MW:

134 aa, 15 kDa

Observed MW:

18-20 kDa

Purification Method:

Antigen affinity purification

Recommended Dilutions:

WB 1:1000-1:4000

IP 0.5-4.0 ug for 1.0-3.0 mg of total protein lysate

IHC 1:50-1:500

IF/ICC 1:200-1:800

Applications

Tested Applications:

WB, IHC, IF/ICC, IP, ELISA

Cited Applications:

WB, IHC, IF, IP

Species Specificity:

human, mouse, rat

Cited Species:

human, mouse

Note-IHC: suggested antigen retrieval with TE buffer pH 9.0; (*) Alternatively, antigen retrieval may be performed with citrate buffer pH 6.0

Positive Controls:

WB : mouse brain tissue, A549 cells, rat brain tissue

IP : A549 cells,

IHC : human brain tissue,

IF/ICC : A549 cells,

Background Information

Complexins are soluble proteins that regulate the activity of soluble N-ethylmaleimide-sensitive factor attachment protein receptor (SNARE) complexes necessary for vesicle fusion. Neuronal specific complexin 1 (CPLX1) has inhibitory and stimulatory effects on exocytosis by clamping trans-SNARE complexes in a prefusion state and promoting conformational changes to facilitate membrane fusion following cell stimulation. Complexin2 (CPLX2) is a pre-synaptic protein believed to regulate neurotransmitter release from pre-synaptic terminals, it is downregulated in schizophrenic patients suffering from depression, animal models of depression and neurological disorders such as Huntington's disease in which depression is a major symptom.

Notable Publications

Author	Pubmed ID	Journal	Application
Minati Singh	31072410	Mol Brain	WB
Marius Walus	26304719	Behav Brain Res	WB
Xue Wen Ng	39554053	bioRxiv	IF

Storage

Storage:

Store at -20°C. Stable for one year after shipment.

Storage Buffer:

PBS with 0.02% sodium azide and 50% glycerol pH 7.3.

Aliquoting is unnecessary for -20°C storage

*** 20ul sizes contain 0.1% BSA

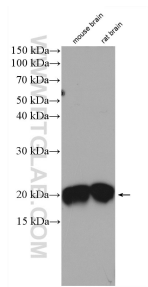
For technical support and original validation data for this product please contact:

T: 1 (888) 4PTGLAB (1-888-478-4522) (toll free in USA), or 1(312) 455-8498 (outside USA)

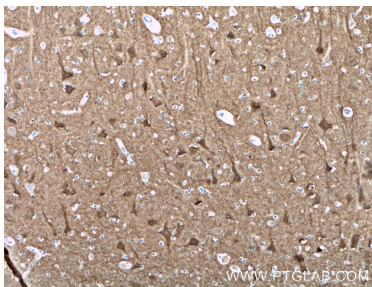
E: proteintech@ptglab.com
W: ptglab.com

This product is exclusively available under Proteintech Group brand and is not available to purchase from any other manufacturer.

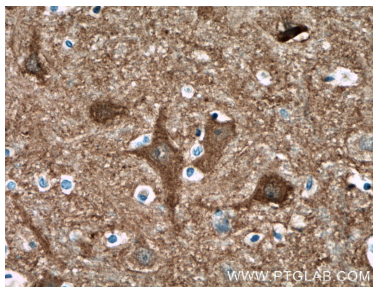
Selected Validation Data



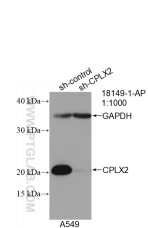
mouse and rat brain tissue were subjected to SDS PAGE followed by western blot with 18149-1-AP (CPLX2 antibody) at dilution of 1:2000 incubated at room temperature for 1.5 hours.



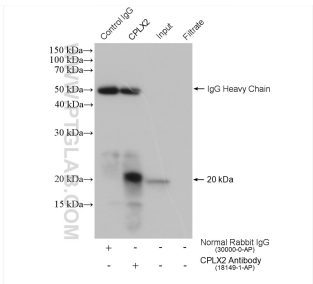
Immunohistochemical analysis of paraffin-embedded human brain tissue slide using 18149-1-AP (CPLX2 antibody) at dilution of 1:200 (under 10x lens. Heat mediated antigen retrieval with Tris-EDTA buffer (pH 9.0).



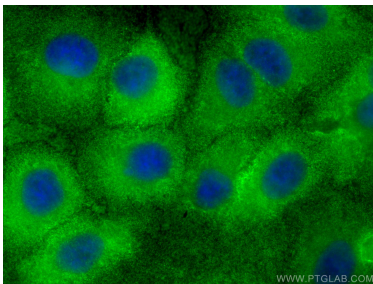
Immunohistochemical analysis of paraffin-embedded human brain tissue slide using 18149-1-AP (CPLX2 antibody) at dilution of 1:200 (under 40x lens. Heat mediated antigen retrieval with Tris-EDTA buffer (pH 9.0).



WB result of CPLX2 antibody (18149-1-AP; 1:1000; incubated at room temperature for 1.5 hours) with sh-Control and sh-CPLX2 transfected A549 cells.



IP result of anti-CPLX2 (IP:18149-1-AP, 4ug; Detection:18149-1-AP 1:1000) with A549 cells lysate 600 ug.



Immunofluorescent analysis of (-20°C Methanol) fixed A549 cells using CPLX2 antibody (18149-1-AP) at dilution of 1:400 and CoraLite®488-Conjugated AffiniPure Goat Anti-Rabbit IgG(H+L) (SA00013-2).