

For Research Use Only

TEM1 Polyclonal antibody

Catalog Number: 18160-1-AP

Featured Product

16 Publications



Basic Information

Catalog Number:

18160-1-AP

Size:

150ul, Concentration: 700 ug/ml by Nanodrop;

Source:

Rabbit

Isotype:

IgG

Immunogen Catalog Number:

AG12990

GenBank Accession Number:

BC051340

GeneID (NCBI):

57124

UNIPROT ID:

Q9HCU0

Full Name:

CD248 molecule, endosialin

Calculated MW:

757 aa, 81 kDa

Observed MW:

160 kDa

Purification Method:

Antigen affinity purification

Recommended Dilutions:

WB: 1:500-1:1000

IHC: 1:4000-1:16000

Applications

Tested Applications:

WB, IHC, ELISA

Cited Applications:

WB, IHC, IF, ColP

Species Specificity:

human, mouse, rat

Cited Species:

human, mouse, rat

Positive Controls:

WB: HUVEC cells,

IHC: human ovary cancer tissue, human colon cancer tissue, human lung cancer tissue

Note-IHC: suggested antigen retrieval with TE buffer pH 9.0; (*) Alternatively, antigen retrieval may be performed with citrate buffer pH 6.0

Background Information

TEM1 (Tumor endothelial marker 1), also named as CD248, Endosialin and CD164L1, is a C-type lectin-like domain (CTLD) containing type I transmembrane glycoprotein. It is now considered to be a highly selective marker for activated perivascular and stromal cells, detected in most cancers and at least some inflammatory disorders. CD248 plays a role in tumor angiogenesis. It is a potential diagnostic tool and therapeutic target of inflammatory and malignant disease. Two isoforms of human TEM1 exist. The calculated molecular weights of the two isoforms are 81 kDa and 46 kDa, respectively. Native TEM1 can be glycosylated, and the glycosylated form has a larger apparent molecular weight than 81 kDa.

Notable Publications

Author	Pubmed ID	Journal	Application
Cheng-Hsiang Kuo	36401329	J Biomed Sci	WB, IHC
Shaojie Liu	35317721	Mol Med	WB, IHC, IF
Fa Yang	32591411	Cancer Res	IF

Storage

Storage:

Store at -20°C. Stable for one year after shipment.

Storage Buffer:

PBS with 0.02% sodium azide and 50% glycerol, pH7.3

Aliquoting is unnecessary for -20°C storage

*** 20ul sizes contain 0.1% BSA

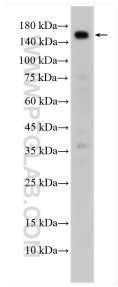
For technical support and original validation data for this product please contact:

T: 1 (888) 4PTGLAB (1-888-478-4522) (toll free in USA), or 1(312) 455-8498 (outside USA)

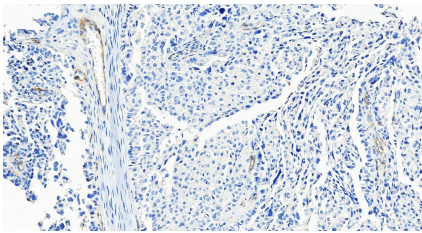
E: proteintech@ptglab.com
W: ptglab.com

This product is exclusively available under Proteintech Group brand and is not available to purchase from any other manufacturer.

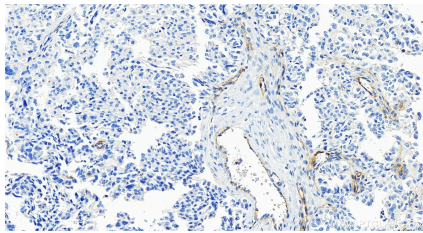
Selected Validation Data



HUVEC cells were subjected to SDS PAGE followed by western blot with 18160-1-AP (TEM1 antibody) at dilution of 1:500 incubated at room temperature for 1.5 hours.



Immunohistochemical analysis of paraffin-embedded human ovary cancer tissue slide using 18160-1-AP (TEM1 antibody) at dilution of 1:8000 (under 20x lens). Heat mediated antigen retrieval with Tris-EDTA buffer (pH 9.0).



Immunohistochemical analysis of paraffin-embedded human ovary cancer tissue slide using 18160-1-AP (TEM1 antibody) at dilution of 1:8000 (under 20x lens). Heat mediated antigen retrieval with Tris-EDTA buffer (pH 9.0).