

For Research Use Only

# WISP1 Polyclonal antibody

Catalog Number: 18166-1-AP

Featured Product

8 Publications



## Basic Information

### Catalog Number:

18166-1-AP

### Size:

150ul, Concentration: 600 ug/ml by Nanodrop;

### Source:

Rabbit

### Isotype:

IgG

### Immunogen Catalog Number:

AG12657

### GenBank Accession Number:

BC074841

### GeneID (NCBI):

8840

### UNIPROT ID:

O95388

### Full Name:

WNT1 inducible signaling pathway protein 1

### Calculated MW:

367 aa, 40 kDa

### Observed MW:

40-45 kDa

### Purification Method:

Antigen affinity purification

### Recommended Dilutions:

WB 1:1000-1:4000

IHC 1:50-1:500

## Applications

### Tested Applications:

WB, IHC, ELISA

### Cited Applications:

WB, IF, IHC

### Species Specificity:

human, mouse

### Cited Species:

human

**Note-IHC: suggested antigen retrieval with TE buffer pH 9.0; (\*) Alternatively, antigen retrieval may be performed with citrate buffer pH 6.0**

### Positive Controls:

**WB**: COLO 320 cells, HEK-293 cells, mouse testis tissue, mouse liver tissue

**IHC**: human stomach cancer tissue, human small intestine tissue, human lung cancer tissue

## Background Information

WISP1( Wnt-induced secreted protein 1), also known as CCN4, is a secreted, matricellular protein allocated to the CCN protein family. The CCN protein family consists of six, modular structured, secreted proteins ( Cyr61, CTGF, Nov, WISP1, WISP2, WISP3 ). WISP1 may be downstream in the WNT1 signaling pathway that is relevant to malignant transformation. WISP1 is expressed at a high level in fibroblast cells, and overexpressed in colon tumors. Its expression is associated with proliferation, cytoprotection, as well as extracellular matrix production. 18166-1-AP antibody detects the 40-45 kDa protein in SDS-PAGE.

## Notable Publications

Author	Pubmed ID	Journal	Application
Jian-Yu Yang	26550461	Am J Transl Res	WB, IHC
Di Jing	28902353	Int J Oncol	
Huihui Ren	36267574	Front Physiol	IHC

## Storage

### Storage:

Store at -20°C. Stable for one year after shipment.

### Storage Buffer:

PBS with 0.02% sodium azide and 50% glycerol pH 7.3.

Aliquoting is unnecessary for -20°C storage

\*\*\* 20ul sizes contain 0.1% BSA

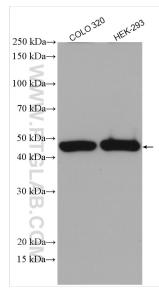
For technical support and original validation data for this product please contact:

T: 1 (888) 4PTGLAB (1-888-478-4522) (toll free in USA), or 1(312) 455-8498 (outside USA)

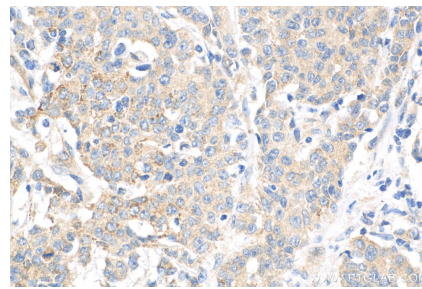
E: [proteintech@ptglab.com](mailto:proteintech@ptglab.com)  
W: [ptglab.com](http://ptglab.com)

This product is exclusively available under Proteintech Group brand and is not available to purchase from any other manufacturer.

## Selected Validation Data



Various lysates were subjected to SDS PAGE followed by western blot with 18166-1-AP (WISP1 antibody) at dilution of 1:2000 incubated at room temperature for 1.5 hours.



Immunohistochemical analysis of paraffin-embedded human stomach cancer tissue slide using 18166-1-AP (WISP1 antibody) at dilution of 1:200 (under 40x lens). Heat mediated antigen retrieval with Tris-EDTA buffer (pH 9.0).