

For Research Use Only

CCL28 Polyclonal antibody

Catalog Number: 18214-1-AP

6 Publications



Basic Information

Catalog Number:

18214-1-AP

Size:

150ul, Concentration: 400 ug/ml by Nanodrop and 327 ug/ml by Bradford method using BSA as the standard;

Source:

Rabbit

Isotype:

IgG

Immunogen Catalog Number:

AG12920

GenBank Accession Number:

BC069532

GeneID (NCBI):

56477

UNIPROT ID:

Q9NRJ3

Full Name:

chemokine (C-C motif) ligand 28

Calculated MW:

127 aa, 14 kDa

Observed MW:

8 kDa-9 kDa

Purification Method:

Antigen affinity purification

Recommended Dilutions:

WB 1:500-1:1000

IHC 1:50-1:500

Applications

Tested Applications:

WB, IHC, ELISA

Cited Applications:

WB, IHC, IF

Species Specificity:

human, mouse

Cited Species:

human, mouse, rat

Positive Controls:

WB : human spleen tissue, Jurkat cells, mouse spleen tissue, PC-3 cells

IHC : human colon cancer tissue,

Note-IHC: suggested antigen retrieval with TE buffer pH 9.0; (*) Alternatively, antigen retrieval may be performed with citrate buffer pH 6.0

Background Information

CCL28, also named as SCYA28, CCK1 and MEC, belongs to the intercrine beta (chemokine CC) family. It has chemotactic activity for resting CD4, CD8 T-cells and eosinophils. CCL28 binds to CCR3 and CCR10 and induces calcium mobilization in a dose-dependent manner. CCL28 is expressed in a variety of human and mouse tissues, and it appears to be predominantly produced by epithelial cells. It is produced by epithelial cells of these tissues suggesting that this chemokine can play an important role by linking homing mechanisms between the gut, nasal mucosa and mammary gland (MG). In WB test, CCL28 is 14kd and 8-9kd (a putatively to a degradation fragment).

Notable Publications

Author	Pubmed ID	Journal	Application
Tianming Li	36461593	Int Immunopharmacol	IHC, WB
Xiao Li Yang	28713975	Oncol Rep	WB
Tara Karnezis	30709930	Cancer Res	IHC, IF

Storage

Storage:

Store at -20°C. Stable for one year after shipment.

Storage Buffer:

PBS with 0.02% sodium azide and 50% glycerol pH 7.3.

Aliquoting is unnecessary for -20°C storage

*** 20ul sizes contain 0.1% BSA

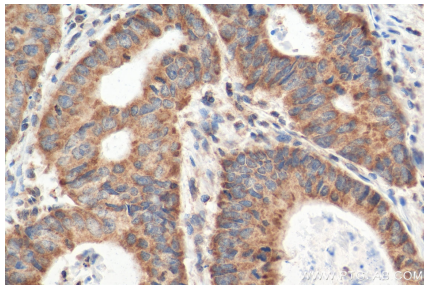
For technical support and original validation data for this product please contact:

T: 1 (888) 4PTGLAB (1-888-478-4522) (toll free in USA), or 1(312) 455-8498 (outside USA)

E: proteintech@ptglab.com
W: ptglab.com

This product is exclusively available under Proteintech Group brand and is not available to purchase from any other manufacturer.

Selected Validation Data



Immunohistochemical analysis of paraffin-embedded human colon cancer tissue slide using 18214-1-AP (CCL28 antibody) at dilution of 1:200 (under 40x lens). Heat mediated antigen retrieval with Tris-EDTA buffer (pH 9.0).



human spleen tissue were subjected to SDS PAGE followed by western blot with 18214-1-AP (CCL28 antibody) at dilution of 1:300 incubated at room temperature for 1.5 hours.