

For Research Use Only

MMP28 Polyclonal antibody

Catalog Number: 18237-1-AP

Featured Product

11 Publications



Basic Information

Catalog Number:

18237-1-AP

Size:

150ul, Concentration: 300 ug/ml by Nanodrop and 133 ug/ml by Bradford method using BSA as the standard;

Source:

Rabbit

Isotype:

IgG

Immunogen Catalog Number:

AG12980

GenBank Accession Number:

BC002631

GeneID (NCBI):

79148

UNIPROT ID:

Q9H239

Full Name:

matrix metalloproteinase 28

Calculated MW:

59 kDa

Observed MW:

48 kDa

Purification Method:

Antigen affinity purification

Recommended Dilutions:

WB: 1:500-1:3000

IHC: 1:20-1:200

IF/ICC: 1:50-1:500

Applications

Tested Applications:

WB, IHC, IF/ICC, ELISA

Cited Applications:

WB, IHC, IF, IP

Species Specificity:

human, mouse, rat

Cited Species:

human, mouse

Note-IHC: suggested antigen retrieval with TE buffer pH 9.0; (*) Alternatively, antigen retrieval may be performed with citrate buffer pH 6.0

Positive Controls:

WB: A549 cells, human colon tissue, mouse heart tissue

IHC: human kidney tissue, human ovary tissue, human skin cancer tissue, human testis tissue

IF/ICC: A549 cells,

Background Information

MMP28 (Epilysin) can degrade casein and play a role in tissues homeostasis and repair. The only specific human cell type recognized to express epilysin is the basal keratinocyte in the skin, where epilysin expression is upregulated during wound repair (PMID:16940349). Western blot showed this antibody recognizes bands at 62 and 58 kDa as well as breakdown products at 50, 48, and 46 kDa (PMID:15953044). This antibody is specific to MMP28.

Notable Publications

Author	Pubmed ID	Journal	Application
Lu-Yao Wang	30303742	FASEB J	WB
Yang Li	30913394	FASEB J	WB
Kyoung-In Cho	28100513	Dis Model Mech	WB, IF

Storage

Storage:

Store at -20°C. Stable for one year after shipment.

Storage Buffer:

PBS with 0.02% sodium azide and 50% glycerol, pH7.3

Aliquoting is unnecessary for -20°C storage

*** 20ul sizes contain 0.1% BSA

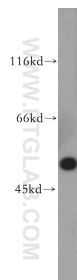
For technical support and original validation data for this product please contact:

T: 1 (888) 4PTGLAB (1-888-478-4522) (toll free in USA), or 1(312) 455-8498 (outside USA)

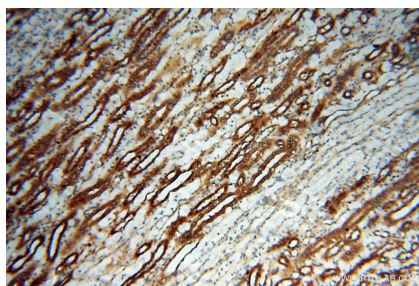
E: proteintech@ptglab.com
W: ptglab.com

This product is exclusively available under Proteintech Group brand and is not available to purchase from any other manufacturer.

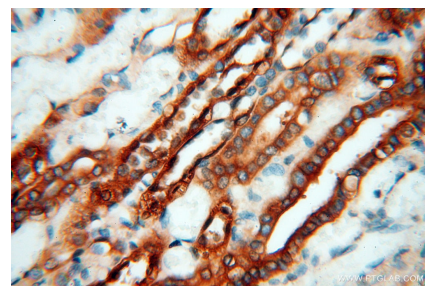
Selected Validation Data



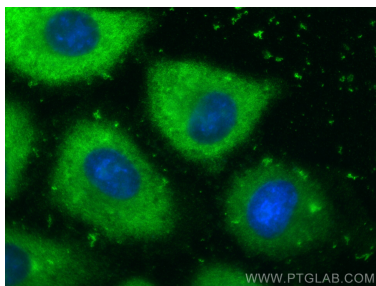
A549 cells were subjected to SDS PAGE followed by western blot with 18237-1-AP (MMP28 antibody) at dilution of 1:500 incubated at room temperature for 1.5 hours.



Immunohistochemical analysis of paraffin-embedded human kidney using 18237-1-AP (MMP28 antibody) at dilution of 1:100 (under 10x lens).



Immunohistochemical analysis of paraffin-embedded human kidney using 18237-1-AP (MMP28 antibody) at dilution of 1:100 (under 40x lens).



Immunofluorescent analysis of (-20°C Methanol) fixed A549 cells using MMP28 antibody (18237-1-AP) at dilution of 1:200 and CoraLite®488-Conjugated Goat Anti-Rabbit IgG(H+L) (SA00013-2).