

For Research Use Only

GADL1 Polyclonal antibody

Catalog Number: 18240-1-AP



Basic Information

Catalog Number:

18240-1-AP

Size:

150ul , Concentration: 300 ug/ml by Nanodrop and 140 ug/ml by Bradford method using BSA as the standard;

Source:

Rabbit

Isotype:

IgG

Immunogen Catalog Number:

AG13005

GenBank Accession Number:

BC093701

GeneID (NCBI):

339896

UNIPROT ID:

Q6ZQY3

Full Name:

glutamate decarboxylase-like 1

Calculated MW:

39 kDa, 59 kDa, 47 kDa

Observed MW:

47 kDa

Purification Method:

Antigen affinity purification

Recommended Dilutions:

WB 1:500-1:1000

IP 0.5-4.0 ug for 1.0-3.0 mg of total protein lysate

Applications

Tested Applications:

WB, IP, ELISA

Species Specificity:

human, mouse

Positive Controls:

WB : mouse cerebellum tissue, human brain tissue

IP : mouse brain tissue,

Storage

Storage:

Store at -20°C. Stable for one year after shipment.

Storage Buffer:

PBS with 0.02% sodium azide and 50% glycerol pH 7.3.

Aliquoting is unnecessary for -20°C storage

*** 20ul sizes contain 0.1% BSA

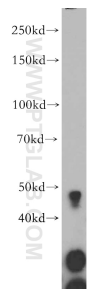
For technical support and original validation data for this product please contact:

T: 1 (888) 4PTGLAB (1-888-478-4522) (toll free in USA), or 1(312) 455-8498 (outside USA)

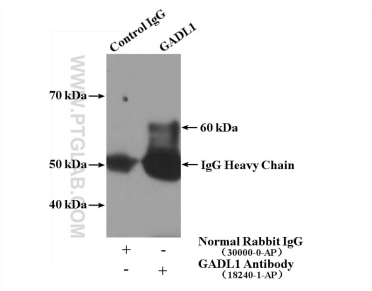
E: proteintech@ptglab.com
W: ptglab.com

This product is exclusively available under Proteintech Group brand and is not available to purchase from any other manufacturer.

Selected Validation Data



mouse cerebellum tissue were subjected to SDS PAGE followed by western blot with 18240-1-AP (GADL1 antibody) at dilution of 1:300 incubated at room temperature for 1.5 hours.



IP result of anti-GADL1 (IP:18240-1-AP, 4ug; Detection:18240-1-AP 1:300) with mouse brain tissue lysate 4000ug.