

For Research Use Only

# ITM2A Polyclonal antibody

Catalog Number: 18306-1-AP

6 Publications



## Basic Information

Catalog Number:

18306-1-AP

Size:

150ul, Concentration: 300 ug/ml by Nanodrop;

Source:

Rabbit

Isotype:

IgG

GenBank Accession Number:

BC040437

GeneID (NCBI):

9452

UNIPROT ID:

O43736

Full Name:

integral membrane protein 2A

Calculated MW:

30 kDa

Observed MW:

32 kDa

Purification Method:

Antigen affinity purification

Recommended Dilutions:

WB 1:5000-1:50000

## Applications

Tested Applications:

WB, ELISA

Cited Applications:

WB, IF, IHC

Species Specificity:

human, mouse, rat

Cited Species:

human, mouse

Positive Controls:

WB : A549 cells, HepG2 cells, Jurkat cells

## Background Information

ITM2A, also named BRICD2A and E25A, is a member of type II integral membrane (ITM2) protein family. ITM2A expression is high in osteogenic and lymphoid tissues, while both ITM2B and ITM2C are expressed in brain. There are 5 articles specifically referring to this gene in PubMed. Proteins are expected to localize in various compartments (cytoplasm, integral to membrane). No phenotype has yet been reported to our knowledge: this gene's in vivo function is yet unknown.

## Notable Publications

Author	Pubmed ID	Journal	Application
Alicia A Cutler	35733848	iScience	IF
Céline Cegarra	35313913	Fluids Barriers CNS	IF
Makiko Kihara	25079563	PLoS One	IHC

## Storage

Storage:

Store at -20°C. Stable for one year after shipment.

Storage Buffer:

PBS with 0.02% sodium azide and 50% glycerol pH 7.3.

Aliquoting is unnecessary for -20°C storage

\*\*\* 20ul sizes contain 0.1% BSA

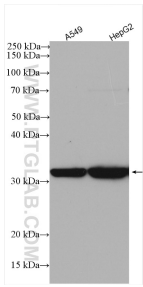
For technical support and original validation data for this product please contact:

T: 1 (888) 4PTGLAB (1-888-478-4522) (toll free in USA), or 1(312) 455-8498 (outside USA)

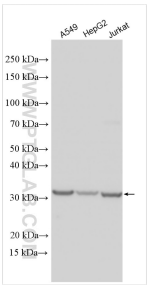
E: [proteintech@ptglab.com](mailto:proteintech@ptglab.com)  
W: [ptglab.com](http://ptglab.com)

This product is exclusively available under Proteintech Group brand and is not available to purchase from any other manufacturer.

## Selected Validation Data



Various lysates were subjected to SDS PAGE followed by western blot with 18306-1-AP (ITM2A antibody) at dilution of 1:1000 incubated at room temperature for 1.5 hours.



Various lysates were subjected to SDS PAGE followed by western blot with 18306-1-AP (ITM2A antibody) at dilution of 1:15000 incubated at room temperature for 1.5 hours.