

For Research Use Only

PIGS Polyclonal antibody

Catalog Number: 18334-1-AP

2 Publications



Basic Information

Catalog Number:

18334-1-AP

Size:

150ul, Concentration: 300 ug/ml by Nanodrop and 293 ug/ml by Bradford method using BSA as the standard;

Source:

Rabbit

Isotype:

IgG

Immunogen Catalog Number:

AG12950

GenBank Accession Number:

BC001319

GeneID (NCBI):

94005

UNIPROT ID:

Q96S52

Full Name:

phosphatidylinositol glycan anchor biosynthesis, class S

Calculated MW:

62 kDa

Observed MW:

65-70 kDa

Purification Method:

Antigen Affinity purified

Recommended Dilutions:

WB 1:200-1:1000

IF/ICC 1:200-1:800

Applications

Tested Applications:

WB, IF/ICC, ELISA

Cited Applications:

WB

Species Specificity:

human, mouse

Cited Species:

human, mouse

Positive Controls:

WB : HeLa cells, A549 cells, HepG2 cells, mouse liver tissue, PC-3 cells

IF/ICC : HepG2 cells,

Background Information

PIGS, also named as GPI transamidase component PIG-S or PRO4316, is a 555 amino acid protein, which belongs to the PIGS family. PIGS localizes in the endoplasmic reticulum membrane. PIGS is a component of the GPI transamidase complex. It is essential for transfer of GPI to proteins, particularly for formation of carbonyl intermediates.

Notable Publications

Author	Pubmed ID	Journal	Application
Takahiro Nakane	30898876	J Biol Chem	WB
Xiaoqiong Wei	38253565	Nat Commun	WB

Storage

Storage:

Store at -20°C. Stable for one year after shipment.

Storage Buffer:

PBS with 0.02% sodium azide and 50% glycerol pH 7.3.

Aliquoting is unnecessary for -20°C storage

*** 20ul sizes contain 0.1% BSA

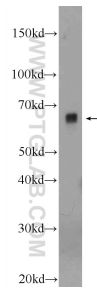
For technical support and original validation data for this product please contact:

T: 1 (888) 4PTGLAB (1-888-478-4522) (toll free in USA), or 1(312) 455-8498 (outside USA)

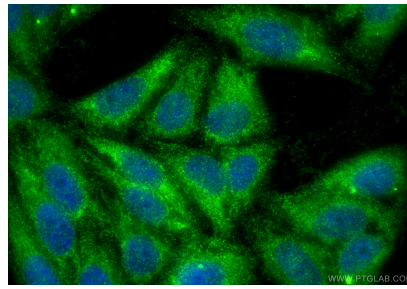
E: proteintech@ptglab.com
W: ptglab.com

This product is exclusively available under Proteintech Group brand and is not available to purchase from any other manufacturer.

Selected Validation Data



HeLa cells were subjected to SDS PAGE followed by western blot with 18334-1-AP (PIGS Antibody) at dilution of 1:300 incubated at room temperature for 1.5 hours.



Immunofluorescent analysis of (-20°C Ethanol) fixed HepG2 cells using PIGS antibody (18334-1-AP) at dilution of 1:400 and CoraLite® 488-Conjugated Goat Anti-Rabbit IgG(H+L) (SA00013-2).