

For Research Use Only

# PLD1 Polyclonal antibody

Catalog Number: 18355-1-AP

1 Publications



## Basic Information

<b>Catalog Number:</b> 18355-1-AP	<b>GenBank Accession Number:</b> BC068976	<b>Purification Method:</b> Antigen affinity purification
<b>Size:</b> 150ul , Concentration: 550 ug/ml by Nanodrop;	<b>GeneID (NCBI):</b> 5337	<b>Recommended Dilutions:</b> WB 1:1000-1:4000
<b>Source:</b> Rabbit	<b>UNIPROT ID:</b> Q13393	<b>IHC 1:50-1:500</b>
<b>Isotype:</b> IgG	<b>Full Name:</b> phospholipase D1, phosphatidylcholine-specific	<b>IF/ICC 1:50-1:500</b>
<b>Immunogen Catalog Number:</b> AG13227	<b>Calculated MW:</b> 1074 aa, 124 kDa	
	<b>Observed MW:</b> 112-124 kDa	

## Applications

<b>Tested Applications:</b> WB, IHC, IF/ICC, ELISA	<b>Positive Controls:</b>
<b>Cited Applications:</b> WB, IF	<b>WB :</b> HeLa cells,
<b>Species Specificity:</b> human, mouse	<b>IHC :</b> mouse heart tissue,
<b>Cited Species:</b> human	<b>IF/ICC :</b> HeLa cells,
<b>Note-IHC: suggested antigen retrieval with TE buffer pH 9.0; (*) Alternatively, antigen retrieval may be performed with citrate buffer pH 6.0</b>	

## Background Information

PLD1(Phospholipase D1) belongs to the phospholipase D family. It is implicated in the release process of a variety of hormones, most likely at a late stage of exocytosis through the production of lipids that are essential for the fusion process and seem to be also essential for fast neurotransmitter release. PLD1 is primarily localized in vesicular structures such as endosomes, lysosomes, and autophagosomes.

## Notable Publications

Author	Pubmed ID	Journal	Application
Yoon Mee-Sup MS	22024166	J Cell Biol	WB,IF

## Storage

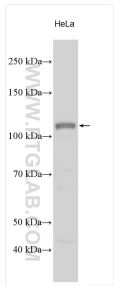
**Storage:**  
Store at -20°C. Stable for one year after shipment.  
**Storage Buffer:**  
PBS with 0.02% sodium azide and 50% glycerol pH 7.3.  
Aliquoting is unnecessary for -20°C storage

\*\*\* 20ul sizes contain 0.1% BSA

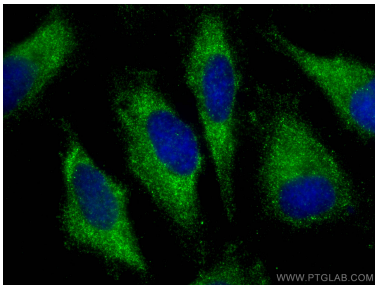
For technical support and original validation data for this product please contact:  
T: 1 (888) 4PTGLAB (1-888-478-4522) (toll free in USA), or 1(312) 455-8498 (outside USA)  
E: proteintech@ptglab.com  
W: ptglab.com

This product is exclusively available under Proteintech Group brand and is not available to purchase from any other manufacturer.

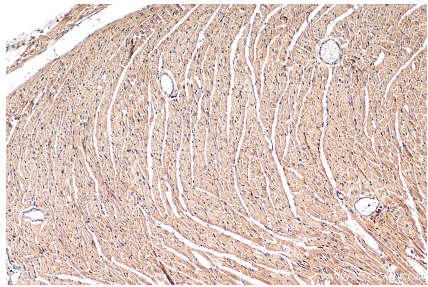
## Selected Validation Data



Various lysates were subjected to SDS PAGE followed by western blot with 18355-1-AP (PLD1 antibody) at dilution of 1:2000 incubated at room temperature for 1.5 hours.



Immunofluorescent analysis of (-20°C Ethanol) fixed HeLa cells using PLD1 antibody (18355-1-AP) at dilution of 1:200 and CoraLite® 488-Conjugated Goat Anti-Rabbit IgG(H+L).



Immunohistochemical analysis of paraffin-embedded mouse heart tissue slide using 18355-1-AP (PLD1 antibody) at dilution of 1:200 (under 10x lens). Heat mediated antigen retrieval with Tris-EDTA buffer (pH 9.0).