

For Research Use Only

KISS1 Polyclonal antibody

Catalog Number: 18375-1-AP

Featured Product

5 Publications



Basic Information

Catalog Number:

18375-1-AP

Size:

150ul, Concentration: 550 ug/ml by Nanodrop;

Source:

Rabbit

Isotype:

IgG

Immunogen Catalog Number:

AG13240

GenBank Accession Number:

BC022819

GeneID (NCBI):

3814

UNIPROT ID:

Q15726

Full Name:

KISS-1 metastasis-suppressor

Calculated MW:

15 kDa

Observed MW:

15 kDa

Purification Method:

Antigen affinity purification

Recommended Dilutions:

WB 1:1000-1:4000

IHC 1:100-1:500

Applications

Tested Applications:

WB, IHC, ELISA

Cited Applications:

WB, IHC

Species Specificity:

human

Cited Species:

human

Positive Controls:

WB : human placenta tissue,

IHC : human liver cancer tissue, human lung cancer tissue

Note-IHC: suggested antigen retrieval with TE buffer pH 9.0; (*) Alternatively, antigen retrieval may be performed with citrate buffer pH 6.0

Background Information

KISS1, also known as kisspeptin, is a metastasis suppressor protein that suppresses metastases of human melanomas and breast carcinomas without affecting tumorigenicity. It may regulate events downstream of cell-matrix adhesion, perhaps involving cytoskeletal reorganization. A C-terminally amidated peptide of KISS1, metastin (kisspeptin-54 or kp-54), functions as the endogenous ligand of the G-protein coupled receptor GPR54 (PMID: 11457843; 11385580). KISS1-GPR54 signaling is involved in the regulation of reproduction, playing an important role in initiating secretion of gonadotropin-releasing hormone (GnRH) at puberty (PMID: 18753370).

Notable Publications

Author	Pubmed ID	Journal	Application
Xinkai Huo	29435037	Oncol Lett	IHC
Jun-Jun Qiu	31577838	Int J Cancer	WB, IHC
Lei Zhang	32333091	Histochem Cell Biol	IHC

Storage

Storage:

Store at -20°C. Stable for one year after shipment.

Storage Buffer:

PBS with 0.02% sodium azide and 50% glycerol, pH7.3

Aliquoting is unnecessary for -20°C storage

*** 20ul sizes contain 0.1% BSA

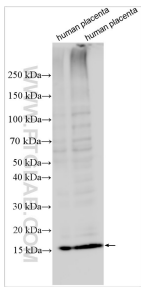
For technical support and original validation data for this product please contact:

T: 1 (888) 4PTGLAB (1-888-478-4522) (toll free in USA), or 1(312) 455-8498 (outside USA)

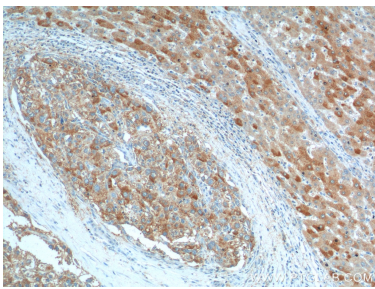
E: proteintech@ptglab.com
W: ptglab.com

This product is exclusively available under Proteintech Group brand and is not available to purchase from any other manufacturer.

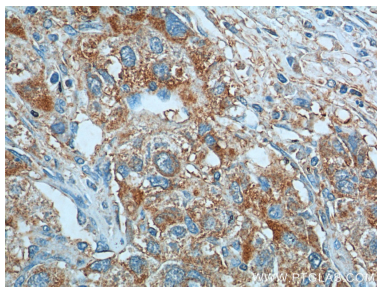
Selected Validation Data



Various lysates were subjected to SDS PAGE followed by western blot with 18375-1-AP (KISS1 antibody) at dilution of 1:2000 incubated at room temperature for 1.5 hours.



Immunohistochemical analysis of paraffin-embedded human liver cancer tissue slide using 18375-1-AP (KISS1 Antibody) at dilution of 1:200 (under 10x lens).



Immunohistochemical analysis of paraffin-embedded human liver cancer tissue slide using 18375-1-AP (KISS1 Antibody) at dilution of 1:200 (under 40x lens).