

For Research Use Only

SLN Polyclonal antibody

Catalog Number: 18395-1-AP

11 Publications



Basic Information

Catalog Number: 18395-1-AP	GenBank Accession Number: BC005261	Purification Method: Antigen affinity purification
Size: 150ul , Concentration: 650 ug/ml by Nanodrop;	GeneID (NCBI): 6588	Recommended Dilutions: IHC 1:50-1:500 IF/ICC 1:20-1:200
Source: Rabbit	UNIPROT ID: O00631	
Isotype: IgG	Full Name: sarcolipin	
Immunogen Catalog Number: AG13176	Calculated MW: 31 aa, 4 kDa	

Applications

Tested Applications: IHC, IF/ICC, ELISA	Positive Controls:
Cited Applications: WB, IF	IHC : human heart tissue,
Species Specificity: human, mouse, rat	IF/ICC : PC-3 cells,
Cited Species: mouse, rat, squirrel	
Note-IHC: suggested antigen retrieval with TE buffer pH 9.0; (*) Alternatively, antigen retrieval may be performed with citrate buffer pH 6.0	

Background Information

SLN, also named as Sarcolipin, belongs to the sarcolipin family. It is associated with calcium ATPase SERCA1. It inhibits SERCA pumps. SLN, a key regulator of cardiac sarco(endo)plasmic reticulum (SR) Ca(2+) ATPase, is predominantly expressed in atria and mediates β -adrenergic responses. SLN can self-assemble to dimer and oligomer for playing important physiological function.

Notable Publications

Author	Pubmed ID	Journal	Application
Patrick F Desmond	26405035	J Biol Chem	WB
Zhe Wang	33192559	Front Physiol	WB,IF
Patrick F Desmond	28487373	J Biol Chem	

Storage

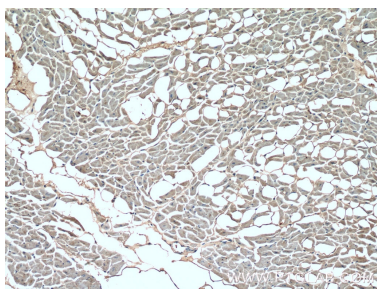
Storage:
Store at -20°C. Stable for one year after shipment.
Storage Buffer:
PBS with 0.02% sodium azide and 50% glycerol pH 7.3.
Aliquoting is unnecessary for -20°C storage

*** 20ul sizes contain 0.1% BSA

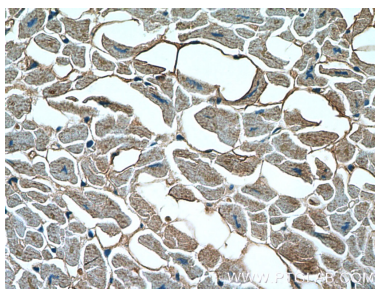
For technical support and original validation data for this product please contact:
T: 1 (888) 4PTGLAB (1-888-478-4522) (toll free in USA), or 1(312) 455-8498 (outside USA)
E: proteintech@ptglab.com
W: ptglab.com

This product is exclusively available under Proteintech Group brand and is not available to purchase from any other manufacturer.

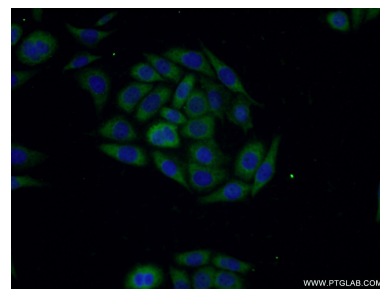
Selected Validation Data



Immunohistochemical analysis of paraffin-embedded human heart tissue slide using 18395-1-AP (SLN Antibody) at dilution of 1:200 (under 10x lens).



Immunohistochemical analysis of paraffin-embedded human heart tissue slide using 18395-1-AP (SLN Antibody) at dilution of 1:200 (under 40x lens).



Immunofluorescent analysis of PC-3 cells using 18395-1-AP (SLN antibody) at dilution of 1:50 and Alexa Fluor 488-conjugated Goat Anti-Rabbit IgG(H+L).