

For Research Use Only

TPPP Polyclonal antibody

Catalog Number: 18742-1-AP **4 Publications**



Basic Information

Catalog Number: 18742-1-AP	GenBank Accession Number: BC131506	Purification Method: Antigen affinity purification
Size: 150ul , Concentration: 500 µg/ml by Nanodrop and 313 µg/ml by Bradford method using BSA as the standard;	GeneID (NCBI): 11076	Recommended Dilutions: WB 1:500-1:3000 IHC 1:20-1:200
Source: Rabbit	Full Name: tubulin polymerization promoting protein	
Isotype: IgG	Calculated MW: 219 aa, 24 kDa	
	Observed MW: 24-28 kDa	

Applications

Tested Applications: IHC, WB, ELISA	Positive Controls:
Cited Applications: IF, IHC, WB	WB : mouse brain tissue, MCF-7 cells, mouse spleen tissue
Species Specificity: human, mouse	IHC : human spleen tissue,
Cited Species: human, mouse, rat	
Note-IHC: suggested antigen retrieval with TE buffer pH 9.0; (*) Alternatively, antigen retrieval may be performed with citrate buffer pH 6.0	

Background Information

TPPP, also named as TPPP1, P24 and P25, belongs to the TPPP family. TPPP promotes in vitro the polymerization of tubulin into double-walled tubules and polymorphic aggregates or bundled stabilized microtubules blocks. When overexpressed, TPPP inhibits mitotic spindle assembly and nuclear envelope breakdown, apparently without affecting other cellular events.

Notable Publications

Author	Pubmed ID	Journal	Application
Meng-Meng Fu	31522887	Cell	IF
Yi Chen	36308866	J Mol Cell Cardiol	WB
Yingfen Wu	33094864	FASEB J	WB, IHC, IF

Storage

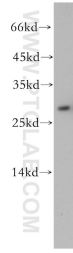
Storage:
Store at -20°C. Stable for one year after shipment.
Storage Buffer:
PBS with 0.02% sodium azide and 50% glycerol pH 7.3.
Aliquoting is unnecessary for -20°C storage

*** 20ul sizes contain 0.1% BSA

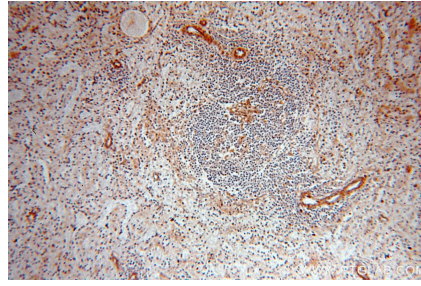
For technical support and original validation data for this product please contact:
T: 1 (888) 4PTGLAB (1-888-478-4522) (toll free in USA), or 1(312) 455-8498 (outside USA)
E: proteintech@ptglab.com
W: ptglab.com

This product is exclusively available under Proteintech Group brand and is not available to purchase from any other manufacturer.

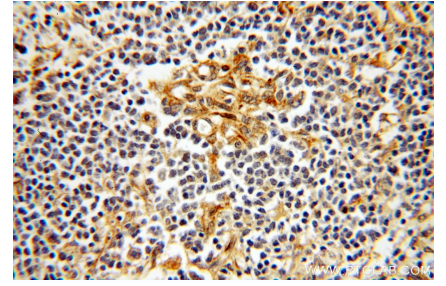
Selected Validation Data



mouse brain tissue were subjected to SDS PAGE followed by western blot with 18742-1-AP (TPPP antibody) at dilution of 1:500 incubated at room temperature for 1.5 hours.



Immunohistochemical analysis of paraffin-embedded human spleen using 18742-1-AP (TPPP antibody) at dilution of 1:100 (under 10x lens).



Immunohistochemical analysis of paraffin-embedded human spleen using 18742-1-AP (TPPP antibody) at dilution of 1:100 (under 40x lens).