

For Research Use Only

Twinkle/PEO1 Polyclonal antibody

Catalog Number: 18793-1-AP



Basic Information

Catalog Number: 18793-1-AP	GenBank Accession Number: BC033762	Purification Method: Antigen affinity purification
Size: 150ul , Concentration: 500 ug/ml by Nanodrop;	GeneID (NCBI): 56652	Recommended Dilutions: WB 1:1000-1:5000 IHC 1:20-1:200
Source: Rabbit	UNIPROT ID: Q96RR1	
Isotype: IgG	Full Name: chromosome 10 open reading frame 2	
Immunogen Catalog Number: AG6628	Calculated MW: 684 aa, 77 kDa	
	Observed MW: 60 kDa	

Applications

Tested Applications: WB, IHC, ELISA	Positive Controls:
Species Specificity: human	WB : Daudi cells, MCF-7 cells, K-562 cells, HeLa cells
Note-IHC: suggested antigen retrieval with TE buffer pH 9.0; (*) Alternatively, antigen retrieval may be performed with citrate buffer pH 6.0	IHC : human pancreas tissue, human skeletal muscle tissue

Background Information

Twinkle, also named as Progressive external ophthalmoplegia 1 protein is a 684 amino acid protein, which involves in mitochondrial DNA (mtDNA) metabolism. The predicted full-length protein is 684 amino acids, with a molecular mass of 77 kD, whereas the splice variant mRNA encodes a 66-kD product of 582 amino acids, lacking residues 579-684 and terminating with four unique amino acids (PMID: 11431692).

Storage

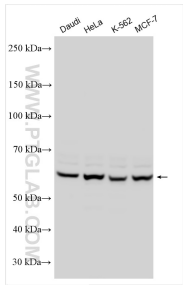
Storage:
Store at -20°C. Stable for one year after shipment.
Storage Buffer:
PBS with 0.02% sodium azide and 50% glycerol pH 7.3.
Aliquoting is unnecessary for -20°C storage

*** 20ul sizes contain 0.1% BSA

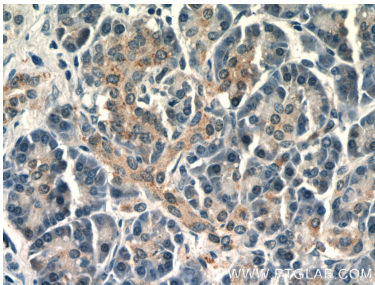
For technical support and original validation data for this product please contact:
T: 1 (888) 4PTGLAB (1-888-478-4522) (toll free in USA), or 1(312) 455-8498 (outside USA)
E: proteintech@ptglab.com
W: ptglab.com

This product is exclusively available under Proteintech Group brand and is not available to purchase from any other manufacturer.

Selected Validation Data



Various lysates were subjected to SDS PAGE followed by western blot with 18793-1-AP (Twinkle antibody) at dilution of 1:2500 incubated at room temperature for 1.5 hours.



Immunohistochemical analysis of paraffin-embedded human pancreas tissue slide using 18793-1-AP (Twinkle antibody at dilution of 1:50).