

For Research Use Only

# MEPE Polyclonal antibody

Catalog Number: 18804-1-AP

Featured Product



## Basic Information

### Catalog Number:

18804-1-AP

### Size:

150ul, Concentration: 700 ug/ml by Nanodrop and 307 ug/ml by Bradford method using BSA as the standard;

### Source:

Rabbit

### Isotype:

IgG

### GenBank Accession Number:

BC128158

### GeneID (NCBI):

56955

### UNIPROT ID:

Q9NQ76

### Full Name:

matrix extracellular phosphoglycoprotein

### Calculated MW:

525 aa, 58 kDa

### Observed MW:

43 kDa, 98 kDa

### Purification Method:

Antigen affinity purification

### Recommended Dilutions:

WB 1:1000-1:4000

## Applications

### Tested Applications:

WB, ELISA

### Species Specificity:

human

### Positive Controls:

WB : HepG2 cells, A2780 cells, A375 cells, HeLa cells, MCF-7 cells

## Background Information

Matrix extracellular phosphoglycoprotein (MEPE), also known as osteoblast/osteocyte factor 45 (OF45), is a member of the small integrin-binding ligand N-linked glycoprotein (SIBLING) family (PMID: 12952171). MEPE promotes renal phosphate excretion and modulates mineralization (PMID: 22582013). It can be phosphorylated by secreted protein kinases (PMID: 14962809). MEPE is expressed in osteoblasts, osteocytes and odontoblasts, and the expression has also been reported in numerous human tumor cell lines (PMID: 14962809; 20145617). It is a 525-amino acid protein with a calculated molecular weight of 58 kDa. This antibody raised against a synthetic peptide (CTHGRKYHYVPHRQNNSTR) detects a major band (43 kDa) and two minor bands (98 kDa and 34 kDa).

## Storage

### Storage:

Store at -20°C. Stable for one year after shipment.

### Storage Buffer:

PBS with 0.02% sodium azide and 50% glycerol pH 7.3.

Aliquoting is unnecessary for -20°C storage

\*\*\* 20ul sizes contain 0.1% BSA

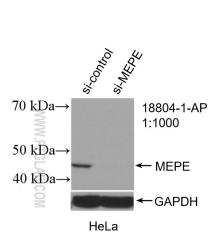
For technical support and original validation data for this product please contact:

T: 1 (888) 4PTGLAB (1-888-478-4522) (toll free in USA), or 1(312) 455-8498 (outside USA)

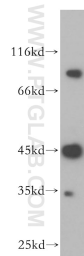
E: [proteintech@ptglab.com](mailto:proteintech@ptglab.com)  
W: [ptglab.com](http://ptglab.com)

This product is exclusively available under Proteintech Group brand and is not available to purchase from any other manufacturer.

Selected Validation Data



WB result of MEPE antibody (18804-1-AP; 1:1000; incubated at room temperature for 1.5 hours) with sh-Control and sh-MEPE transfected HeLa cells.



HepG2 cells were subjected to SDS PAGE followed by western blot with 18804-1-AP (MEPE antibody) at dilution of 1:600 incubated at room temperature for 1.5 hours.