

For Research Use Only

PSKH2 Polyclonal antibody

Catalog Number: 18813-1-AP



Basic Information

Catalog Number:

18813-1-AP

Size:

150ul , Concentration: 400 ug/ml by Nanodrop and 187 ug/ml by Bradford method using BSA as the standard;

Source:

Rabbit

Isotype:

IgG

GenBank Accession Number:

BC126182

GeneID (NCBI):

85481

UNIPROT ID:

Q96QS6

Full Name:

protein serine kinase H2

Calculated MW:

43 kDa

Observed MW:

35 kDa

Purification Method:

Antigen affinity purification

Recommended Dilutions:

WB 1:1000-1:4000

IP 0.5-4.0 ug for 1.0-3.0 mg of total protein lysate

IHC 1:20-1:200

IF/ICC 1:20-1:200

Applications

Tested Applications:

WB, IHC, IF/ICC, IP, ELISA

Species Specificity:

human

Note-IHC: suggested antigen retrieval with TE buffer pH 9.0; (*) Alternatively, antigen retrieval may be performed with citrate buffer pH 6.0

Positive Controls:

WB : HepG2 cells, human brain tissue, human heart tissue, human testis tissue

IP : HepG2 cells,

IHC : human kidney tissue,

IF/ICC : HepG2 cells,

Background Information

PSKH2 belongs to the protein kinase superfamily and CAMK Ser/Thr protein kinase family. PSKH2 catalytic the reaction: ATP + a protein = ADP + a phosphoprotein.

Storage

Storage:

Store at -20°C. Stable for one year after shipment.

Storage Buffer:

PBS with 0.02% sodium azide and 50% glycerol pH 7.3.

Aliquoting is unnecessary for -20°C storage

*** 20ul sizes contain 0.1% BSA

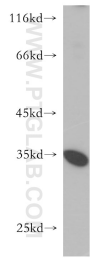
For technical support and original validation data for this product please contact:

T: 1 (888) 4PTGLAB (1-888-478-4522) (toll free in USA), or 1(312) 455-8498 (outside USA)

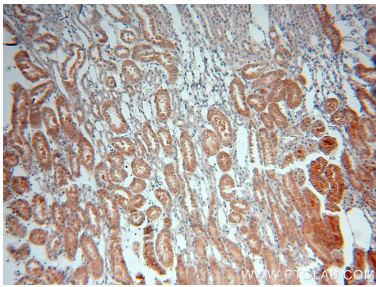
E: proteintech@ptglab.com
W: ptglab.com

This product is exclusively available under Proteintech Group brand and is not available to purchase from any other manufacturer.

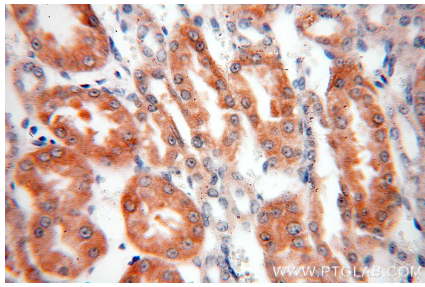
Selected Validation Data



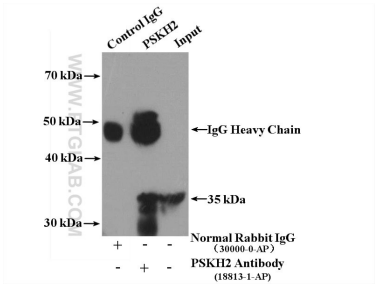
HepG2 cells were subjected to SDS PAGE followed by western blot with 18813-1-AP (PSKH2 antibody) at dilution of 1:600 incubated at room temperature for 1.5 hours.



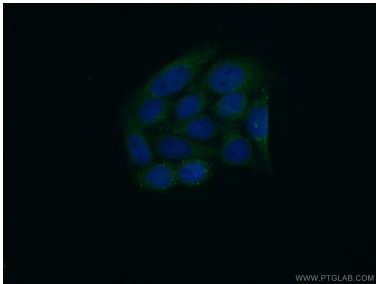
Immunohistochemical analysis of paraffin-embedded human kidney using 18813-1-AP (PSKH2 antibody) at dilution of 1:100 (under 10x lens).



Immunohistochemical analysis of paraffin-embedded human kidney using 18813-1-AP (PSKH2 antibody) at dilution of 1:100 (under 40x lens).



IP result of anti-PSKH2 (IP:18813-1-AP, 4ug; Detection:18813-1-AP 1:500) with HepG2 cells lysate 3400ug.



Immunofluorescent analysis of (10% Formaldehyde) fixed HepG2 cells using 18813-1-AP (PSKH2 antibody) at dilution of 1:50 and Alexa Fluor 488-conjugated Goat Anti-Rabbit IgG(H+L).